



BULACAN AGRICULTURAL STATE COLLEGE

Rehabilitation of BASC Internet Café

FY 2023

Preface

These Philippine Bidding Documents (PBDs) for the procurement of Infrastructure Projects (hereinafter referred to also as the “Works”) through Competitive Bidding have been prepared by the Government of the Philippines for use by all branches, agencies, departments, bureaus, offices, or instrumentalities of the government, including government-owned and/or -controlled corporations, government financial institutions, state universities and colleges, local government units, and autonomous regional government. The procedures and practices presented in this document have been developed through broad experience, and are for mandatory use in projects that are financed in whole or in part by the Government of the Philippines or any foreign government/foreign or international financing institution in accordance with the provisions of the 2016 revised Implementing Rules and Regulations (IRR) of Republic Act (RA) No. 9184.

The PBDs are intended as a model for admeasurements (unit prices or unit rates in a bill of quantities) types of contract, which are the most common in Works contracting.

The Bidding Documents shall clearly and adequately define, among others: (i) the objectives, scope, and expected outputs and/or results of the proposed contract; (ii) the eligibility requirements of Bidders; (iii) the expected contract duration; and (iv) the obligations, duties, and/or functions of the winning Bidder.

Care should be taken to check the relevance of the provisions of the PBDs against the requirements of the specific Works to be procured. If duplication of a subject is inevitable in other sections of the document prepared by the Procuring Entity, care must be exercised to avoid contradictions between clauses dealing with the same matter.

Moreover, each section is prepared with notes intended only as information for the Procuring Entity or the person drafting the Bidding Documents. They shall not be included in the final documents. The following general directions should be observed when using the documents:

- a. All the documents listed in the Table of Contents are normally required for the procurement of Infrastructure Projects. However, they should be adapted as necessary to the circumstances of the particular Project.
- b. Specific details, such as the “*name of the Procuring Entity*” and “*address for bid submission*,” should be furnished in the Instructions to Bidders, Bid Data Sheet, and Special Conditions of Contract. The final documents should contain neither blank spaces nor options.
- c. This Preface and the footnotes or notes in italics included in the Invitation to Bid, BDS, General Conditions of Contract, Special Conditions of Contract, Specifications, Drawings, and Bill of Quantities are not part of the text of the final document, although they contain instructions that the Procuring Entity should strictly follow.
- d. The cover should be modified as required to identify the Bidding Documents as to the names of the Project, Contract, and Procuring Entity, in addition to date of issue.

- e. Modifications for specific Procurement Project details should be provided in the Special Conditions of Contract as amendments to the Conditions of Contract. For easy completion, whenever reference has to be made to specific clauses in the Bid Data Sheet or Special Conditions of Contract, these terms shall be printed in bold typeface on Sections I (Instructions to Bidders) and III (General Conditions of Contract), respectively.
- f. For guidelines on the use of Bidding Forms and the procurement of Foreign-Assisted Projects, these will be covered by a separate issuance of the Government Procurement Policy Board.

TABLE OF CONTENTS

Glossary of Terms, Abbreviations, and Acronyms	5
Section I. Invitation to Bid.....	8
Section II. Instructions to Bidders	11
1. Scope of Bid.....	12
2. Funding Information	12
3. Bidding Requirements.....	12
4. Corrupt, Fraudulent, Collusive, Coercive, and Obstructive Practices	12
5. Eligible Bidders.....	12
6. Origin of Associated Goods	13
7. Subcontracts	13
8. Pre-Bid Conference.....	13
9. Clarification and Amendment of Bidding Documents.....	13
10. Documents Comprising the Bid: Eligibility and Technical Components	13
11. Documents Comprising the Bid: Financial Component	14
12. Alternative Bids	14
13. Bid Prices	14
14. Bid and Payment Currencies.....	15
15. Bid Security.....	15
16. Sealing and Marking of Bids.....	15
17. Deadline for Submission of Bids	15
18. Opening and Preliminary Examination of Bids	15
19. Detailed Evaluation and Comparison of Bids.....	16
20. Post Qualification.....	16
21. Signing of the Contract	16
Section III. Bid Data Sheet	17
Section IV. General Conditions of Contract.....	20
1. Scope of Contract.....	21
2. Sectional Completion of Works	21
3. Possession of Site	21
4. The Contractor's Obligations.....	21
5. Performance Security	22
6. Site Investigation Reports	22

7.	Warranty.....	22
8.	Liability of the Contractor.....	22
9.	Termination for Other Causes.....	22
10.	Dayworks	23
11.	Program of Work.....	23
12.	Instructions, Inspections and Audits	23
13.	Advance Payment.....	23
14.	Progress Payments	23
15.	Operating and Maintenance Manuals.....	24
Section V. Special Conditions of Contract.....		25
Section VI. Specifications		27
Section VII. Drawings.....		Error! Bookmark not defined.
Section VIII. Bill of Quantities		59
Section IX. Checklist of Technical and Financial Documents		69

Glossary of Terms, Abbreviations, and Acronyms

ABC – Approved Budget for the Contract.

ARCC – Allowable Range of Contract Cost.

BAC – Bids and Awards Committee.

Bid – A signed offer or proposal to undertake a contract submitted by a bidder in response to and in consonance with the requirements of the bidding documents. Also referred to as *Proposal* and *Tender*. (2016 revised IRR, Section 5[c])

Bidder – Refers to a contractor, manufacturer, supplier, distributor and/or consultant who submits a bid in response to the requirements of the Bidding Documents. (2016 revised IRR, Section 5[d])

Bidding Documents – The documents issued by the Procuring Entity as the bases for bids, furnishing all information necessary for a prospective bidder to prepare a bid for the Goods, Infrastructure Projects, and/or Consulting Services required by the Procuring Entity. (2016 revised IRR, Section 5[e])

BIR – Bureau of Internal Revenue.

BSP – Bangko Sentral ng Pilipinas.

CDA – Cooperative Development Authority.

Consulting Services – Refer to services for Infrastructure Projects and other types of projects or activities of the GOP requiring adequate external technical and professional expertise that are beyond the capability and/or capacity of the GOP to undertake such as, but not limited to: (i) advisory and review services; (ii) pre-investment or feasibility studies; (iii) design; (iv) construction supervision; (v) management and related services; and (vi) other technical services or special studies. (2016 revised IRR, Section 5[i])

Contract – Refers to the agreement entered into between the Procuring Entity and the Supplier or Manufacturer or Distributor or Service Provider for procurement of Goods and Services; Contractor for Procurement of Infrastructure Projects; or Consultant or Consulting Firm for Procurement of Consulting Services; as the case may be, as recorded in the Contract Form signed by the parties, including all attachments and appendices thereto and all documents incorporated by reference therein.

Contractor – is a natural or juridical entity whose proposal was accepted by the Procuring Entity and to whom the Contract to execute the Work was awarded. Contractor as used in these Bidding Documents may likewise refer to a supplier, distributor, manufacturer, or consultant.

CPI – Consumer Price Index.

DOLE – Department of Labor and Employment.

DTI – Department of Trade and Industry.

Foreign-funded Procurement or Foreign-Assisted Project – Refers to procurement whose funding source is from a foreign government, foreign or international financing institution as specified in the Treaty or International or Executive Agreement. (2016 revised IRR, Section 5[b]).

GFI – Government Financial Institution.

GOCC – Government-owned and/or –controlled corporation.

Goods – Refer to all items, supplies, materials and general support services, except Consulting Services and Infrastructure Projects, which may be needed in the transaction of public businesses or in the pursuit of any government undertaking, project or activity, whether in the nature of equipment, furniture, stationery, materials for construction, or personal property of any kind, including non-personal or contractual services such as the repair and maintenance of equipment and furniture, as well as trucking, hauling, janitorial, security, and related or analogous services, as well as procurement of materials and supplies provided by the Procuring Entity for such services. The term “related” or “analogous services” shall include, but is not limited to, lease or purchase of office space, media advertisements, health maintenance services, and other services essential to the operation of the Procuring Entity. (2016 revised IRR, Section 5[r])

GOP – Government of the Philippines.

Infrastructure Projects – Include the construction, improvement, rehabilitation, demolition, repair, restoration or maintenance of roads and bridges, railways, airports, seaports, communication facilities, civil works components of information technology projects, irrigation, flood control and drainage, water supply, sanitation, sewerage and solid waste management systems, shore protection, energy/power and electrification facilities, national buildings, school buildings, hospital buildings, and other related construction projects of the government. Also referred to as *civil works or works*. (2016 revised IRR, Section 5[u])

LGUs – Local Government Units.

NFCC – Net Financial Contracting Capacity.

NGA – National Government Agency.

PCAB – Philippine Contractors Accreditation Board.

PhilGEPS - Philippine Government Electronic Procurement System.

Procurement Project – refers to a specific or identified procurement covering goods, infrastructure project or consulting services. A Procurement Project shall be described, detailed, and scheduled in the Project Procurement Management Plan prepared by the agency which shall be consolidated in the procuring entity's Annual Procurement Plan. (GPPB Circular No. 06-2019 dated 17 July 2019)

PSA – Philippine Statistics Authority.

SEC – Securities and Exchange Commission.

SLCC – Single Largest Completed Contract.

UN – United Nations.

Section I. Invitation to Bid

Notes on the Invitation to Bid

The Invitation to Bid (IB) provides information that enables potential Bidders to decide whether to participate in the procurement at hand. The IB shall be posted in accordance with Section 21.2 of the 2016 revised IRR of RA No. 9184.

Apart from the essential items listed in the Bidding Documents, the IB should also indicate the following:

- a. The date of availability of the Bidding Documents, which shall be from the time the IB is first advertised/posted until the deadline for the submission and receipt of bids;
- b. The place where the Bidding Documents may be acquired or the website where it may be downloaded;
- c. The deadline for the submission and receipt of bids; and
- d. Any important bid evaluation criteria.

The IB should be incorporated into the Bidding Documents. The information contained in the IB must conform to the Bidding Documents and in particular to the relevant information in the Bid Data Sheet.



**Bulacan Agricultural State College
San Ildefonso, Bulacan, 3010**

INVITATION TO BID

Rehabilitation of BASC Internet Café

1. The *Bulacan Agricultural State College*, through the GAA 2022 intends to apply the sum of *Two Million Nine Hundred Seventy Thousand Pesos (Php 2,970,000.00)* being the Approved Budget for the Contract (ABC) to payments under the contract **2023-01-INFRA: Rehabilitation of BASC Internet Cafe** . Bids received in excess of the ABC shall be automatically rejected at bid opening.
2. The *Bulacan Agricultural State College* now invites bids for the above Procurement Project. Completion of the Works is required *on or before one hundred twenty (120) calendar days*. Bidders should have completed a contract similar to the Project. The description of an eligible bidder is contained in the Bidding Documents, particularly, in Section II (Instructions to Bidders).
3. Bidding will be conducted through open competitive bidding procedures using non-discretionary “*pass/fail*” criterion as specified in the 2016 revised Implementing Rules and Regulations (IRR) of Republic Act (RA) No. 9184.
4. Interested bidders may obtain further information *Bulacan Agricultural State College* and inspect the Bidding Documents at the address given below from *8:00am to 4:30pm*.
5. A complete set of Bidding Documents may be acquired by interested bidders on *December 14, 2022 to January 4, 2023* from given address and website/s below *and upon payment of the applicable fee for the Bidding Documents, pursuant to the latest Guidelines issued by the GPPB, in the amount of Three Thousand pesos (Php 3,000.00)*. Procuring Entity shall allow the bidder to present its proof of payment for the fees *by presenting the receipt upon submission of their bid documents*.
6. The *Bulacan Agricultural State College* will hold a Pre-Bid Conference¹ on ***December 21, 2022, 08:00 AM AM via Zoom Platform (Meeting ID: 844 3489 8523; Passcode: 014340)*** which shall be open to prospective bidders.
7. Bids must be duly received by the BAC Secretariat through manual submission at the office address as indicated below on or before ***08:30 AM of January 4, 2023***. Late bids shall not be accepted.

¹ May be deleted in case the ABC is less than One Million Pesos (PhP1,000,000) where the Procuring Entity may not hold a Pre-Bid Conference.

8. All bids must be accompanied by a bid security in any of the acceptable forms and in the amount stated in **ITB** Clause 16.
9. Bid opening shall be on **January 4, 2023, 9:00AM** at the **Conference Room, Ground Floor, Farmers Training Center, BASC, San Ildefonso, Bulacan**. Bids will be opened in the presence of the bidders' representatives who choose to attend the activity.
10. *Observers will be invited to attend and witness the bid proceedings.*
11. The *Bulacan Agricultural State College* reserves the right to reject any and all bids, declare a failure of bidding, or not award the contract at any time prior to contract award in accordance with Sections 35.6 and 41 of the 2016 revised IRR of RA No. 9184, without thereby incurring any liability to the affected bidder or bidders.
12. For further information, please refer to:

CORAZON R. ABABA
BAC Secretariat
BULACAN AGRICULTURAL STATE COLLEGE
Brgy. Pinaod, San Ildefonso, Bulacan
(044) 697-1240 and 0955-367-2231
corazon.ababa@basc.edu.ph
www.basc.edu.ph

13. You may visit the following websites:

For downloading of Bidding Documents:

corazon.ababa@basc.edu.ph
www.basc.edu.ph

December 13, 2022


RONALD REAGAN T. ALONZO, Ph.D.

BAC Chairperson

Section II. Instructions to Bidders

Notes on the Instructions to Bidders

This Section on the Instruction to Bidders (ITB) provides the information necessary for bidders to prepare responsive bids, in accordance with the requirements of the Procuring Entity. It also provides information on bid submission, eligibility check, opening and evaluation of bids, post-qualification, and on the award of contract.

1. Scope of Bid

The Procuring Entity, *Bulacan Agricultural State College*, invites Bids for the **Rehabilitation of BASC Internet Cafe**, with Project Identification Number *2023-01-INFRA*.

The Procurement Project (referred to herein as “Project”) is for the construction of Works, as described in Section VI (Specifications).

2. Funding Information

- a. The GOP through the source of funding as indicated below for *GAA 2022* in the amount of *Php2,970,000.00*.
- b. The source of funding is:
 - a. NGA, the National Expenditure Program.

3. Bidding Requirements

The Bidding for the Project shall be governed by all the provisions of RA No. 9184 and its 2016 revised IRR, including its Generic Procurement Manual and associated policies, rules and regulations as the primary source thereof, while the herein clauses shall serve as the secondary source thereof.

Any amendments made to the IRR and other GPPB issuances shall be applicable only to the ongoing posting, advertisement, or invitation to bid by the BAC through the issuance of a supplemental or bid bulletin.

The Bidder, by the act of submitting its Bid, shall be deemed to have inspected the site, determined the general characteristics of the contracted Works and the conditions for this Project, such as the location and the nature of the work; (b) climatic conditions; (c) transportation facilities; (c) nature and condition of the terrain, geological conditions at the site communication facilities, requirements, location and availability of construction aggregates and other materials, labor, water, electric power and access roads; and (d) other factors that may affect the cost, duration and execution or implementation of the contract, project, or work and examine all instructions, forms, terms, and project requirements in the Bidding Documents.

4. Corrupt, Fraudulent, Collusive, Coercive, and Obstructive Practices

The Procuring Entity, as well as the Bidders and Contractors, shall observe the highest standard of ethics during the procurement and execution of the contract. They or through an agent shall not engage in corrupt, fraudulent, collusive, coercive, and obstructive practices defined under Annex “I” of the 2016 revised IRR of RA No. 9184 or other integrity violations in competing for the Project.

5. Eligible Bidders

- 5.1. Only Bids of Bidders found to be legally, technically, and financially capable will be evaluated.

- 5.2. The Bidder must have an experience of having completed a Single Largest Completed Contract (SLCC) that is similar to this Project, equivalent to at least fifty percent (50%) of the ABC adjusted, if necessary, by the Bidder to current prices using the PSA's CPI, except under conditions provided for in Section 23.4.2.4 of the 2016 revised IRR of RA No. 9184.

A contract is considered to be "similar" to the contract to be bid if it has the major categories of work stated in the **BDS**.

- 5.3. For Foreign-funded Procurement, the Procuring Entity and the foreign government/foreign or international financing institution may agree on another track record requirement, as specified in the Bidding Document prepared for this purpose.
- 5.4. The Bidders shall comply with the eligibility criteria under Section 23.4.2 of the 2016 IRR of RA No. 9184.

6. Origin of Associated Goods

There is no restriction on the origin of Goods other than those prohibited by a decision of the UN Security Council taken under Chapter VII of the Charter of the UN.

7. Subcontracts

- 7.1. The Procuring Entity has prescribed that:
- a. Subcontracting is not allowed.

8. Pre-Bid Conference

The Procuring Entity will hold a pre-bid conference for this Project on the specified date and time via online platform as indicated in paragraph 6 of the **IB**.

9. Clarification and Amendment of Bidding Documents

Prospective bidders may request for clarification on and/or interpretation of any part of the Bidding Documents. Such requests must be in writing and received by the Procuring Entity, either at its given address or through electronic mail indicated in the **IB**, at least ten (10) calendar days before the deadline set for the submission and receipt of Bids.

10. Documents Comprising the Bid: Eligibility and Technical Components

- 10.1. The first envelope shall contain the eligibility and technical documents of the Bid as specified in **Section IX. Checklist of Technical and Financial Documents**.

- 10.2. If the eligibility requirements or statements, the bids, and all other documents for submission to the BAC are in foreign language other than English, it must be accompanied by a translation in English, which shall be authenticated by the appropriate Philippine foreign service establishment, post, or the equivalent office having jurisdiction over the foreign bidder's affairs in the Philippines. For Contracting Parties to the Apostille Convention, only the translated documents shall be authenticated through an apostille pursuant to GPPB Resolution No. 13-2019 dated 23 May 2019. The English translation shall govern, for purposes of interpretation of the bid.
- 10.3. A valid PCAB License is required, and in case of joint ventures, a valid special PCAB License, and registration for the type and cost of the contract for this Project. Any additional type of Contractor license or permit shall be indicated in the **BDS**.
- 10.4. A List of Contractor's key personnel (e.g., Project Manager, Project Engineers, Materials Engineers, and Foremen) assigned to the contract to be bid, with their complete qualification and experience data shall be provided. These key personnel must meet the required minimum years of experience set in the **BDS**.
- 10.5. A List of Contractor's major equipment units, which are owned, leased, and/or under purchase agreements, supported by proof of ownership, certification of availability of equipment from the equipment lessor/vendor for the duration of the project, as the case may be, must meet the minimum requirements for the contract set in the **BDS**.

11. Documents Comprising the Bid: Financial Component

- 11.1. The second bid envelope shall contain the financial documents for the Bid as specified in **Section IX. Checklist of Technical and Financial Documents**.
- 11.2. Any bid exceeding the ABC indicated in paragraph 1 of the **IB** shall not be accepted.
- 11.3. For Foreign-funded procurement, a ceiling may be applied to bid prices provided the conditions are met under Section 31.2 of the 2016 revised IRR of RA No. 9184.

12. Alternative Bids

Bidders shall submit offers that comply with the requirements of the Bidding Documents, including the basic technical design as indicated in the drawings and specifications. Unless there is a value engineering clause in the **BDS**, alternative Bids shall not be accepted.

13. Bid Prices

All bid prices for the given scope of work in the Project as awarded shall be considered as fixed prices, and therefore not subject to price escalation during

contract implementation, except under extraordinary circumstances as determined by the NEDA and approved by the GPPB pursuant to the revised Guidelines for Contract Price Escalation guidelines.

14. Bid and Payment Currencies

14.1. Bid prices may be quoted in the local currency or tradeable currency accepted by the BSP at the discretion of the Bidder. However, for purposes of bid evaluation, Bids denominated in foreign currencies shall be converted to Philippine currency based on the exchange rate as published in the BSP reference rate bulletin on the day of the bid opening.

14.2. *Payment of the contract price shall be made in:*
a. Philippine Pesos.

15. Bid Security

15.1. The Bidder shall submit a Bid Securing Declaration or any form of Bid Security in the amount indicated in the **BDS**, which shall be not less than the percentage of the ABC in accordance with the schedule in the **BDS**.

15.2. The Bid and bid security shall be valid until *120 days from the opening of bids*. Any bid not accompanied by an acceptable bid security shall be rejected by the Procuring Entity as non-responsive.

16. Sealing and Marking of Bids

Each bidder shall submit one copy of the original of the first and second components of its Bid and plus two (2) copies of each kind, labeled as copy 1 and copy 2.

Each Bidder shall submit one copy of the first and second components of its Bid.

The Procuring Entity may request additional hard copies and/or electronic copies of the Bid. However, failure of the Bidders to comply with the said request shall not be a ground for disqualification.

If the Procuring Entity allows the submission of bids through online submission to the given website or any other electronic means, the Bidder shall submit an electronic copy of its Bid, which must be digitally signed. An electronic copy that cannot be opened or is corrupted shall be considered non-responsive and, thus, automatically disqualified.

17. Deadline for Submission of Bids

The Bidders shall submit on the specified date and time and either at its physical address as indicated in paragraph 7 of the **IB**.

18. Opening and Preliminary Examination of Bids

- 18.1. The BAC shall open the Bids in public at the time, on the date, and at the place specified in paragraph 9 of the **IB**. The Bidders' representatives who are present shall sign a register evidencing their attendance. In case videoconferencing, webcasting or other similar technologies will be used, attendance of participants shall likewise be recorded by the BAC Secretariat.

In case the Bids cannot be opened as scheduled due to justifiable reasons, the rescheduling requirements under Section 29 of the 2016 revised IRR of RA No. 9184 shall prevail.

- 18.2. The preliminary examination of Bids shall be governed by Section 30 of the 2016 revised IRR of RA No. 9184.

19. Detailed Evaluation and Comparison of Bids

- 19.1. The Procuring Entity's BAC shall immediately conduct a detailed evaluation of all Bids rated "*passed*" using non-discretionary pass/fail criteria. The BAC shall consider the conditions in the evaluation of Bids under Section 32.2 of 2016 revised IRR of RA No. 9184.
- 19.2. If the Project allows partial bids, all Bids and combinations of Bids as indicated in the **BDS** shall be received by the same deadline and opened and evaluated simultaneously so as to determine the Bid or combination of Bids offering the lowest calculated cost to the Procuring Entity. Bid Security as required by **ITB** Clause 16 shall be submitted for each contract (lot) separately.
- 19.3. In all cases, the NFCC computation pursuant to Section 23.4.2.6 of the 2016 revised IRR of RA No. 9184 must be sufficient for the total of the ABCs for all the lots participated in by the prospective Bidder.

20. Post Qualification

Within a non-extendible period of five (5) calendar days from receipt by the Bidder of the notice from the BAC that it submitted the Lowest Calculated Bid, the Bidder shall submit its latest income and business tax returns filed and paid through the BIR Electronic Filing and Payment System (eFPS), and other appropriate licenses and permits required by law and stated in the **BDS**.

21. Signing of the Contract

The documents required in Section 37.2 of the 2016 revised IRR of RA No. 9184 shall form part of the Contract. Additional Contract documents are indicated in the **BDS**.

Section III. Bid Data Sheet

Notes on the Bid Data Sheet (BDS)

The Bid Data Sheet (BDS) consists of provisions that supplement, amend, or specify in detail, information, or requirements included in the ITB found in Section II, which are specific to each procurement.

This Section is intended to assist the Procuring Entity in providing the specific information in relation to corresponding clauses in the ITB and has to be prepared for each specific procurement.

The Procuring Entity should specify in the BDS information and requirements specific to the circumstances of the Procuring Entity, the processing of the procurement, and the bid evaluation criteria that will apply to the Bids. In preparing the BDS, the following aspects should be checked:

- a. Information that specifies and complements provisions of the ITB must be incorporated.
- b. Amendments and/or supplements, if any, to provisions of the ITB as necessitated by the circumstances of the specific procurement, must also be incorporated.

Bid Data Sheet

ITB Clause																						
5.2	For this purpose, contracts similar to the Project refer to contracts which have the same major categories of work, which shall be: <i>[construction, renovation, rehabilitation, repair of school, laboratory and office buildings].</i>																					
7.1	<i>Subcontracting is not allowed.</i>																					
10.3	<i>Appropriate PCAB License commensurate to the Project.</i>																					
10.4	The key personnel must meet the required minimum years of experience set below: <table border="1" style="width: 100%; border-collapse: collapse;"> <thead> <tr> <th style="text-align: left;"><u>Key Personnel</u></th> <th style="text-align: left;"><u>General Experience</u></th> <th style="text-align: left;"><u>Relevant Experience</u></th> </tr> </thead> <tbody> <tr> <td>Civil Engineer/ Architect</td> <td>at least 5 years</td> <td>at least 5 years</td> </tr> <tr> <td>Materials Engineer</td> <td>at least 5 years</td> <td>at least 5 years</td> </tr> <tr> <td>Foreman</td> <td>at least 5 years</td> <td>at least 5 years</td> </tr> <tr> <td>Safety Officer</td> <td>at least 5 years</td> <td>at least 5 years</td> </tr> <tr> <td>Skilled Laborer</td> <td>at least 3 years</td> <td>at least 3 years</td> </tr> <tr> <td>Laborer</td> <td style="text-align: center;">-</td> <td style="text-align: center;">-</td> </tr> </tbody> </table>	<u>Key Personnel</u>	<u>General Experience</u>	<u>Relevant Experience</u>	Civil Engineer/ Architect	at least 5 years	at least 5 years	Materials Engineer	at least 5 years	at least 5 years	Foreman	at least 5 years	at least 5 years	Safety Officer	at least 5 years	at least 5 years	Skilled Laborer	at least 3 years	at least 3 years	Laborer	-	-
<u>Key Personnel</u>	<u>General Experience</u>	<u>Relevant Experience</u>																				
Civil Engineer/ Architect	at least 5 years	at least 5 years																				
Materials Engineer	at least 5 years	at least 5 years																				
Foreman	at least 5 years	at least 5 years																				
Safety Officer	at least 5 years	at least 5 years																				
Skilled Laborer	at least 3 years	at least 3 years																				
Laborer	-	-																				
10.5	The minimum major equipment requirements are the following: <table border="1" style="width: 100%; border-collapse: collapse;"> <thead> <tr> <th style="text-align: left;"><u>Equipment</u></th> <th style="text-align: left;"><u>Capacity</u></th> <th style="text-align: left;"><u>Number of Units</u></th> </tr> </thead> <tbody> <tr> <td>Mini dump truck or Elf truck</td> <td></td> <td style="text-align: center;">1</td> </tr> <tr> <td>Concrete Mixer</td> <td>one bagger</td> <td style="text-align: center;">2</td> </tr> <tr> <td>Cut Off/ bar cutter</td> <td style="text-align: center;">-</td> <td style="text-align: center;">2</td> </tr> <tr> <td>Bar Bender</td> <td style="text-align: center;">-</td> <td style="text-align: center;">2</td> </tr> <tr> <td>Concrete Vibrator</td> <td style="text-align: center;">-</td> <td style="text-align: center;">2</td> </tr> <tr> <td>Welding Machine</td> <td>heavy duty</td> <td style="text-align: center;">2</td> </tr> </tbody> </table>	<u>Equipment</u>	<u>Capacity</u>	<u>Number of Units</u>	Mini dump truck or Elf truck		1	Concrete Mixer	one bagger	2	Cut Off/ bar cutter	-	2	Bar Bender	-	2	Concrete Vibrator	-	2	Welding Machine	heavy duty	2
<u>Equipment</u>	<u>Capacity</u>	<u>Number of Units</u>																				
Mini dump truck or Elf truck		1																				
Concrete Mixer	one bagger	2																				
Cut Off/ bar cutter	-	2																				
Bar Bender	-	2																				
Concrete Vibrator	-	2																				
Welding Machine	heavy duty	2																				
12	<i>Alternative Bids are not allowed.</i>																					
15.1	The bid security shall be in the form of a Bid Securing Declaration or any of the following forms and amounts: <ul style="list-style-type: none"> a. The amount of not less than Php59,400.00 [(2%) of ABC], if bid security is in cash, cashier's/manager's check, bank draft/guarantee or irrevocable letter of credit; b. The amount of not less than Php148,500.00 [(5%) of ABC] if bid 																					

	security is in Surety Bond.
19.2	Partial bids are not allowed
20	<i>[Building permit, Occupancy permit, Locational Clearance, Environmental Compliance Certificate, Certification that the project site is not within a geohazard zone.etc.]</i>
21	Additional contract documents relevant to the Project that may be required by existing laws and/or the Procuring Entity, such as construction schedule and S-curve, manpower schedule, construction methods, equipment utilization schedule, construction safety and health program approved by the DOLE, and (PERT/CPM) or other acceptable tools of project scheduling.

Section IV. General Conditions of Contract

Notes on the General Conditions of Contract

The General Conditions of Contract (GCC) in this Section, read in conjunction with the Special Conditions of Contract in Section V and other documents listed therein, should be a complete document expressing all the rights and obligations of the parties.

Matters governing performance of the Contractor, payments under the contract, or matters affecting the risks, rights, and obligations of the parties under the contract are included in the GCC and Special Conditions of Contract.

Any complementary information, which may be needed, shall be introduced only through the Special Conditions of Contract.

1. Scope of Contract

This Contract shall include all such items, although not specifically mentioned, that can be reasonably inferred as being required for its completion as if such items were expressly mentioned herein. All the provisions of RA No. 9184 and its 2016 revised IRR, including the Generic Procurement Manual, and associated issuances, constitute the primary source for the terms and conditions of the Contract, and thus, applicable in contract implementation. Herein clauses shall serve as the secondary source for the terms and conditions of the Contract.

This is without prejudice to Sections 74.1 and 74.2 of the 2016 revised IRR of RA No. 9184 allowing the GPPB to amend the IRR, which shall be applied to all procurement activities, the advertisement, posting, or invitation of which were issued after the effectivity of the said amendment.

2. Sectional Completion of Works

If sectional completion is specified in the **Special Conditions of Contract (SCC)**, references in the Conditions of Contract to the Works, the Completion Date, and the Intended Completion Date shall apply to any Section of the Works (other than references to the Completion Date and Intended Completion Date for the whole of the Works).

3. Possession of Site

4.1. The Procuring Entity shall give possession of all or parts of the Site to the Contractor based on the schedule of delivery indicated in the **SCC**, which corresponds to the execution of the Works. If the Contractor suffers delay or incurs cost from failure on the part of the Procuring Entity to give possession in accordance with the terms of this clause, the Procuring Entity's Representative shall give the Contractor a Contract Time Extension and certify such sum as fair to cover the cost incurred, which sum shall be paid by Procuring Entity.

4.2. If possession of a portion is not given by the above date, the Procuring Entity will be deemed to have delayed the start of the relevant activities. The resulting adjustments in contract time to address such delay may be addressed through contract extension provided under Annex "E" of the 2016 revised IRR of RA No. 9184.

4. The Contractor's Obligations

The Contractor shall employ the key personnel named in the Schedule of Key Personnel indicating their designation, in accordance with **ITB** Clause 10.3 and specified in the **BDS**, to carry out the supervision of the Works.

The Procuring Entity will approve any proposed replacement of key personnel only if their relevant qualifications and abilities are equal to or better than those of the personnel listed in the Schedule.

5. Performance Security

- 5.1. Within ten (10) calendar days from receipt of the Notice of Award from the Procuring Entity but in no case later than the signing of the contract by both parties, the successful Bidder shall furnish the performance security in any of the forms prescribed in Section 39 of the 2016 revised IRR.
- 5.2. The Contractor, by entering into the Contract with the Procuring Entity, acknowledges the right of the Procuring Entity to institute action pursuant to RA No. 3688 against any subcontractor be they an individual, firm, partnership, corporation, or association supplying the Contractor with labor, materials and/or equipment for the performance of this Contract.

6. Site Investigation Reports

The Contractor, in preparing the Bid, shall rely on any Site Investigation Reports referred to in the **SCC** supplemented by any information obtained by the Contractor.

7. Warranty

- 7.1. In case the Contractor fails to undertake the repair works under Section 62.2.2 of the 2016 revised IRR, the Procuring Entity shall forfeit its performance security, subject its property(ies) to attachment or garnishment proceedings, and perpetually disqualify it from participating in any public bidding. All payables of the GOP in his favor shall be offset to recover the costs.
- 7.2. The warranty against Structural Defects/Failures, except that occasioned-on force majeure, shall cover the period from the date of issuance of the Certificate of Final Acceptance by the Procuring Entity. Specific duration of the warranty is found in the **SCC**.

8. Liability of the Contractor

Subject to additional provisions, if any, set forth in the **SCC**, the Contractor's liability under this Contract shall be as provided by the laws of the Republic of the Philippines.

If the Contractor is a joint venture, all partners to the joint venture shall be jointly and severally liable to the Procuring Entity.

9. Termination for Other Causes

Contract termination shall be initiated in case it is determined *prima facie* by the Procuring Entity that the Contractor has engaged, before, or during the implementation of the contract, in unlawful deeds and behaviors relative to contract acquisition and implementation, such as, but not limited to corrupt, fraudulent, collusive, coercive, and obstructive practices as stated in **ITB** Clause 4.

10. Dayworks

Subject to the guidelines on Variation Order in Annex “E” of the 2016 revised IRR of RA No. 9184, and if applicable as indicated in the SCC, the Dayworks rates in the Contractor’s Bid shall be used for small additional amounts of work only when the Procuring Entity’s Representative has given written instructions in advance for additional work to be paid for in that way.

11. Program of Work

11.1. The Contractor shall submit to the Procuring Entity’s Representative for approval the said Program of Work showing the general methods, arrangements, order, and timing for all the activities in the Works. The submissions of the Program of Work are indicated in the SCC.

11.2. The Contractor shall submit to the Procuring Entity’s Representative for approval an updated Program of Work at intervals no longer than the period stated in the SCC. If the Contractor does not submit an updated Program of Work within this period, the Procuring Entity’s Representative may withhold the amount stated in the SCC from the next payment certificate and continue to withhold this amount until the next payment after the date on which the overdue Program of Work has been submitted.

12. Instructions, Inspections and Audits

The Contractor shall permit the GOP or the Procuring Entity to inspect the Contractor’s accounts and records relating to the performance of the Contractor and to have them audited by auditors of the GOP or the Procuring Entity, as may be required.

13. Advance Payment

The Procuring Entity shall, upon a written request of the Contractor which shall be submitted as a Contract document, make an advance payment to the Contractor in an amount not exceeding fifteen percent (15%) of the total contract price, to be made in lump sum, or at the most two installments according to a schedule specified in the SCC, subject to the requirements in Annex “E” of the 2016 revised IRR of RA No. 9184.

14. Progress Payments

The Contractor may submit a request for payment for Work accomplished. Such requests for payment shall be verified and certified by the Procuring Entity’s Representative/Project Engineer. Except as otherwise stipulated in the SCC, materials and equipment delivered on the site but not completely put in place shall not be included for payment.

15. Operating and Maintenance Manuals

- 15.1. If required, the Contractor will provide “as built” Drawings and/or operating and maintenance manuals as specified in the **SCC**.
- 15.2. If the Contractor does not provide the Drawings and/or manuals by the dates stated above, or they do not receive the Procuring Entity’s Representative’s approval, the Procuring Entity’s Representative may withhold the amount stated in the **SCC** from payments due to the Contractor.

Section V. Special Conditions of Contract

Notes on the Special Conditions of Contract

Similar to the BDS, the clauses in this Section are intended to assist the Procuring Entity in providing contract-specific information in relation to corresponding clauses in the GCC found in Section IV.

The Special Conditions of Contract (SCC) complement the GCC, specifying contractual requirements linked to the special circumstances of the Procuring Entity, the Procuring Entity's country, the sector, and the Works procured. In preparing this Section, the following aspects should be checked:

- a. Information that complements provisions of the GCC must be incorporated.
- b. Amendments and/or supplements to provisions of the GCC as necessitated by the circumstances of the specific purchase, must also be incorporated.

However, no special condition which defeats or negates the general intent and purpose of the provisions of the GCC should be incorporated herein.

Special Conditions of Contract

GCC Clause	
2	<i>The intended completion date of Proposed Rehabilitation of BASC Internet Cafe is One Hundred Twenty (120) calendar days from the date of the receipt of Notice to Proceed.</i>
4.1	<i>The schedule of delivery of the possession of the site to the contractor is upon the receipt of the Notice to Proceed.</i>
6	The site investigation reports are: <i>none</i>
7.2	<i>In case of permanent structures, such as buildings of types 4 and 5 as classified under the National Building Code of the Philippines and other structures made of steel, iron, or concrete which comply with relevant structural codes (e.g., DPWH Standard Specifications), such as, but not limited to, steel/concrete bridges, flyovers, aircraft movement areas, ports, dams, tunnels, filtration and treatment plants, sewerage systems, power plants, transmission and communication towers, railway system, and other similar permanent structures:] Fifteen (15) years.</i>
10	a. Dayworks are applicable at the rate shown in the Contractor's original Bid.
11.1	The Contractor shall submit the Program of Work to the Procuring Entity's Representative within <i>[7 calendar]</i> days of delivery of the Notice of Award.
11.2	The amount to be withheld for late submission of an updated Program of Work is 1% of the progress billing.
13	The amount of the advance payment is <i>fifteen percent (15%) of the contract price to be paid upon written request of the contractor reconciling on the date of the Notice to Proceed and upon submission of an irrevocable standby letter of credit of equivalent value from a commercial bank, and bank guarantee or a surety bond callable upon demand, issued by a surety or insurance company duly licensed by the insurance Commission.</i>
14	Materials and equipment delivered on the site but not completely put in place shall not be included for payment.
15.1	The date by which "as built" drawings are required is fifteen (15) calendar days from completion of project.
15.2	The amount to be withheld for failing to produce "as built" drawings and/or operating and maintenance manuals by the date required is 0.1% of the final contract amount <i>[amount in local currency]</i> .

Section VI. Specifications

Notes on Specifications

A set of precise and clear specifications is a prerequisite for Bidders to respond realistically and competitively to the requirements of the Procuring Entity without qualifying or conditioning their Bids. In the context of international competitive bidding, the specifications must be drafted to permit the widest possible competition and, at the same time, present a clear statement of the required standards of workmanship, materials, and performance of the goods and services to be procured. Only if this is done will the objectives of economy, efficiency, and fairness in procurement be realized, responsiveness of Bids be ensured, and the subsequent task of bid evaluation facilitated. The specifications should require that all goods and materials to be incorporated in the Works be new, unused, of the most recent or current models, and incorporate all recent improvements in design and materials unless provided otherwise in the Contract.

Samples of specifications from previous similar projects are useful in this respect. The use of metric units is mandatory. Most specifications are normally written specially by the Procuring Entity or its representative to suit the Works at hand. There is no standard set of Specifications for universal application in all sectors in all regions, but there are established principles and practices, which are reflected in these PBDs.

There are considerable advantages in standardizing General Specifications for repetitive Works in recognized public sectors, such as highways, ports, railways, urban housing, irrigation, and water supply, in the same country or region where similar conditions prevail. The General Specifications should cover all classes of workmanship, materials, and equipment commonly involved in construction, although not necessarily to be used in a particular Works Contract. Deletions or addenda should then adapt the General Specifications to the particular Works.

Care must be taken in drafting specifications to ensure that they are not restrictive. In the specification of standards for goods, materials, and workmanship, recognized international standards should be used as much as possible. Where other particular standards are used, whether national standards or other standards, the specifications should state that goods, materials, and workmanship that meet other authoritative standards, and which ensure substantially equal or higher quality than the standards mentioned, will also be acceptable. The following clause may be inserted in the SCC.

Sample Clause: Equivalency of Standards and Codes

Wherever reference is made in the Contract to specific standards and codes to be met by the goods and materials to be furnished, and work performed or tested, the provisions of the latest current edition or revision of the relevant standards and codes in effect shall apply, unless otherwise expressly stated in the Contract. Where such standards and codes are national, or relate to a particular country or region, other authoritative standards that

ensure a substantially equal or higher quality than the standards and codes specified will be accepted subject to the Procuring Entity's Representative's prior review and written consent. Differences between the standards specified and the proposed alternative standards shall be fully described in writing by the Contractor and submitted to the Procuring Entity's Representative at least twenty-eight (28) days prior to the date when the Contractor desires the Procuring Entity's Representative's consent. In the event the Procuring Entity's Representative determines that such proposed deviations do not ensure substantially equal or higher quality, the Contractor shall comply with the standards specified in the documents.

These notes are intended only as information for the Procuring Entity or the person drafting the Bidding Documents. They should not be included in the final Bidding Documents.

Proposed Rehabilitation of BASC Internet Cafe

BASC Main Campus

TECHNICAL SPECIFICATIONS

BULACAN AGRICULTURAL STATE COLLEGE

Pinaod, San Idefonso, Bulacan

December 2022

SPECIFICATIONS

1. GENERAL REQUIREMENTS

- 1.1 These specifications are intended to cover all labor and materials required for the complete construction of the proposed projects as shown in the working drawings as described herein.
- 1.2 Materials and/ or work not specifically mentioned in the specifications, working drawings, and other contract documents but is implied and deemed necessary to complete the work shall be supplied by the Contractor and executed in a workman-like manner, of appropriate number, location, and size of the highest quality available without extra cost to the Owner.
- 1.3 The Owner reserves the right to alter and/or omit any part of the plans with the approval of the Architect or Engineer as the case may be. Any extra charge must be situated to the Architect and/or Project Manager for approval before final acceptance.
- 1.4 The Contractor shall secure all permits and licenses as required and also shall be responsible for all the liabilities, under Workmen's Compensation, SSS, Insurance, etc
- 1.5 The Contractor shall furnish for approval of the Architect/Engineer, with promptness, samples as specified or required. Works shall be in accordance with the approved samples.
- 1.6 The Contractor shall guarantee the works, except for those with specific guarantee for a period of one (1) year after final acceptance by the Owner. He shall repair, replace and make good at his expenses any and all defects, which may arise during that term of guarantee and warranty due to defective workmanship and/or interior quality of materials.

2. METHODS OF CONSTRUCTION

- 2.1 The construction shall be done in the manner that would cause least disturbance to neighborhood and occupant of the area. The contractor will be allowed to work 24 hours if necessary to complete the work on time subject to approval of the owner.
- 2.2 All works to be done shall be of the best quality and workmanship.

3. MASONRY

- 3.1 Exterior wall should be CHB 5 inches wall bearing with 10 mm diameter reinforcement bars spaced @ 0.80 meter for vertical and for every 3 layers of CHB for horizontal bars.
- 3.2 Partition wall should be CHB 5 inches with 10 mm diameter reinforcement bars spaced @ 0.80 meter for vertical and for every 3 layers of CHB for horizontal bars in rooms, hallway, and toilet.
- 3.3 Low partition should be CHB 4 inches 1.80 meters high with 10 mm diameter reinforcement bars spaced @ 0.80 meters for vertical and for every 3 layer of CHB for horizontal bars in toilet partition/cubicles.

4. WALL FINISHES

- 4.1. Interior walls finishes should be smooth plain cement plaster; concrete neutralizer treatment; patching; paint finish (BOYSEN paint or approved equal).

NOTE: Patchwork should be followed with one coat of concrete primer as primer-surfacer to reduce unsightly uneven appearance after topcoat application.

- 4.2. Exterior wall finishes should be smooth plain cement plaster; concrete neutralizer treatment; patching; 2 coat paint finish (BOYSEN paint or approved equal).
- 4.3. Provide 30 cm x 60 cm glazed wall tiles (EUROTILES or approved equal) from finish floor line to 1.80 meter high, for all toilet and cubicles
- 4.4. Provide 30 cm x 60 cm glazed wall tiles (EUROTILES or approved equal) for splashboards for lavatories in laboratory/ kitchen.
- 4.5. Provide 2” thick simulated stone cladding (ASI, STONE AGE or approved equal), see plans and drawings.

5. CEILING FINISHES

- 5.1. All interior ceiling - 4.5 mm thick fiber cement HARDIFLEX ceiling board riveted on metal furring channels providing a V-cut in every joint; prevent rivet head to exposed in ceiling surface; patching all rivets and joints w/ skim coat; 2 coat paint finish flat latex paint (BOYSEN or approved equal).
- 5.2. Outside ceiling – 8” x L x 0.4 mm thick spandrel (UNION Brand or approved equal).
- 5.3. Provide eaves hole for ventilation (see plans and drawings)
- 5.4. Provide 4” ceiling drop if necessary (see plans and drawings).

6. CARPENTRY WORKS

- 6.1. Cabinets beneath the lavatory/ kitchen counters in 2” x 3” KD treated wood frame; ¾” MDF membrane press doors w/ liston; paint finish.
- 6.2. Provide concealed hinges and handle for cabinet doors.
- 6.3. All door jamb should be 2’ x 6” KD treated wood, paint finish.

7. DOORS/HARDWARES

- 7.1. A set of 4.2 m x 2.40 m x ¼” thk Glass door with Wall: (At Front GF)
 - Alum. Glass Double Panel Door (1.60m x 2.10m in size) w/ lockset, &
 - Fixed Glass wall ¼” thk.
- 7.2. 0.8 m x 2.1 m PVC Door with 2” PVC Door Jamb for PWD toilet.
- 7.3. 1.60 x 2.10m x 41 mm Thk Kiln Dry Solid Double Panel Door W/ 50 mm x 150 mm Solid Door Jamb.

- 7.4. 0.6 m x 2.1 m PVC door with 2” PVC Door Jamb for common CR.
- 7.5. Provide 1 set of door knob (YALE or approved equal) and 4 pcs of 3-1/2” hinges (loose pin STANLEY or approved equal) each panel-type door.

8. WINDOWS

- 8.1. 4.1 m x 2.5 m aluminum and glass single-panel window elevated 0.40m from finish floor line (see plans and drawings)
- 8.2. 4.1 m x 2 .0 m Aluminum and glass single-panels window elevated 0.40m from finish floor line (see plans and drawings)
- 8.3. 0.6 m x 2.10 m aluminum and glass 3 panels (Top & Mid-awning and bottom fixed) window elevated 0.30m from finish floor line (see plans and drawings)
- 8.4. 0.5 m x 0.5 m aluminum and glass awning window elevated 1.60m from finish floor line for toilets. (see plans and drawings)
- 8.5. All aluminum frames shall be of the best quality, ANALOK finish free from internal defects.
- 8.6. All glass shall be ¼” thick brown in color.

9. TILE WORKS

- 9.1. 60 cm x 60 cm double polish glazed tiles, EUROTILES or approved equal, for flooring at ground and 2nd floor (submit sample for approval).
- 9.2. 30 cm x 30 cm unglazed tiles, EUROTILES or approved equal for landing,thread,and riser in all stairs. (submit sample for approval).
- 9.3. 30 cm x 60 cm glazed tiles, EUROTILES or approved equal, for walls of toilets and cubicles. (submit sample for approval).
- 9.4. 30 cm x 30 cm unglazed tiles, EUROTILES or approved equal for flooring of toilets and cubicles. (submit sample for approval).
- 9.5. 60 cm x 60 cm double polish glazed tiles, EUROTILES or approved equal for countertops and 30 cm x 60 cm double polish glazed tiles for splashboard for sink and lavatories. (submit sample for approval).
- 9.6. 60 cm x 60 cm unglazed tiles, EUROTILES or approved equal, for exterior flooring at ground and 2nd floor (submit sample for approval)
- 9.7. Provide tile grout for tile joints.
- 9.8. Provide 2 coats of waterproofing before laying of floor tiles in all toilets in the second floor.

10. SANITARY WORK/ FITTINGS & FIXTURES

10.1. FITTINGS & FIXTURES

- 10.1.1. Water closet - closed-coupled wáter closet by POZZI or approved equal w/ complete fittings and accessories. (submit sample for approval).
- 10.1.2. Lavatory - basin-type counter lavatory by POZZI or approved equal w/ complete fittings and accessories. (submit sample for approval).
- 10.1.3. Lavatory faucet - basin mixer w/ complete accessories by HCG or approved equal. (submit sample for approval).
- 10.1.4. Urinal - wash down/ gravity-flushing by HCG or approved equal w/ complete fittings and accessories. (submit sample for approval)
- 10.1.5. Soap holder – by POZZI or approved equal.
- 10.1.6. Tissue holder – by POZZI or approved equal
- 10.1.7. Floor drain – 4” x 4” stainless steel floor drain.
- 10.2. 25 mm and 20 mm polypropylene random (PPR) pipes and PPR fittings for wáter supply lines/ cold wáter lines. (as per plan).
- 10.3. 100mm (4”) and 50 mm (2”) diameter unplasticized polyvinyl chloride (uPVC) sanitary pipes and fittings (neltex orange series 1000). (as per plan).
- 10.4. One (1) septic tank (as per plan)
- 10.5. Drainage system and catch basins (as per plan)
- 10.6. Provide p-trap to all floor drains and sink.
- 10.7. Other fittings and accessories as consumables needed on actual site conditions not included above are to be included in consumables and miscellaneous.

11. PAINTING WORKS

Materials Brand – BOYSEN or APPROVED EQUAL.

11.1. FOR INTERIOR/EXTERIOR CONCRETE PLASTER:

- Pre-treatment : Concrete Neutralizer. Test with litmus or PH paper
- First Coat : Water-Based Epoxy Primer (for badly weathered concrete or when long lasting durability is desired)
- Patchwork : Patch-eeze Patching Compound.

NOTE: Patchwork should be followed with one coat of Concrete Primer as primer-surfacer to reduce unsightly uneven appearance after topcoat application.

Second Coat : Two (2) coats of Semi-gloss Latex.

12.2. FOR INTERIOR CEILINGS:

First Coat : Interior Primer and Sealer

Patchwork : Skim coat

Second Coat : Two (2) coats of Flat Latex

12.3. FOR INTERIOR WOODWORKS AND DOORS:

First Coat : Wood Putty

Second Coat : Two (2) coats of Quick Drying Enamel.

12. ELECTRICAL WORKS

12.1. WIRES / CONDUCTORS

12.1.1. Power line - Insulated Copper Wire for 600V level, THW for main feeder and TW for load side, Sycwin, Philflex or approved equal.

12.2. CONDUITS

12.2.1. Service Entrance – Rigid Steel Conduit (RSC), galvanized iron Schedule 40.

12.2.2. Internal & Embedded – PVC pipes by Powerguard or approved equal

12.3. FIXTURES & DEVICES

12.3.1. Utility Box – 2” x 4” Poly or approved equal.

12.3.2. Junction Box – 4” x 4” w/ cover Poly or approved equal.

12.3.3. Switches – 2” x 4” switch set by Panasonic or approved equal (1 gang/2 gang/3 gang) see plans and drawings.

12.3.4. Outlets – 2” x 4” duplex convenience outlet set by Panasonic or approved equal.

12.3.5. Panel Board – Ga. # 16 metal enclosure with copper bus bar, dead front, flush mounted, Nema Brand or approved equal.

12.3.6. Circuit Breaker – Molded case polyester resin, bolt ton type thermal magnetic type, common internal trip, 250V AC, 10KAIC minimum, General Electric or approved equal (ampere rating as specified on plans).

12.3.7. Grounding System – 16 mm dia. X 3000mm hot dipped Galvanized Steel Ground Rod.

12.4. LIGHTING FIXTURES

12.4.1. 40 watts luminaire LED light w/ aluminum reflector (surfaces type) .

15.4.2. 6” dia. Pinlight receptacle w/ 16 watts LED bulb Firefly or approved equal.

13. ROOFING WORKS

13.1. Roofing sheet should be rib-type pre-painted long span 0.4 mm thick unión Brand or approved equal.

13.2. Flashing gutter, flashing, ridge roll, and valley roll should be made up of GI prepainted sheet 0.4 mm thick unión Brand or approved equal.

13.3. Provide sealant/elastoseal to all screws, flashing, ridge roll and valley roll.

13.4. Provide 2” x 3” C-purlins 1.2 mm thick and 2” x 7” C-purlins 1.2 mm thick for fascia board

13.5. Provide 2”x4” Tubular GI 1.5mm thick for roofing rafters.

13.7. All connections for steel trusses should be welded together.

13.8. All steel trusses and welded connections should be coated with metal primer.

14. CONCRETE WORKS


- 14.1. Class A mixture (1 part portland cement, 2 part sand, and 4 part gravel) for slabs in 2nd floor and landings, stairs, columns, beams, lintel beams, tie beams, column footings, wall footings, canopy and septic tank.
- 14.2. Class B mixture (1 part portland cement, 2-1/2 part sand, and 5 part gravel) for slabs in ground floor and all other concrete not mention in 14.1.
- 14.3. Cement plaster must be 1 part portland cement, and 3 part sand.

15. MISCELLANEOUS

- 15.1. Provide ¼” thick mirror glass for wall of all toilets covering the entire length of countertops of lavatory.
- 15.2. Provide pebbles stone for all ramp-up and exterior steps/stairs covering the thread and riser.
- 15.3. Stairs and PWD ramp-up - Provide 2” Ø x 1.5 mm thick stainless tube (mirror type SUS 304) for stairs handrail and main post; 1-1/2” Ø x 1.5 mm thick stainless tube for vertical members; 1” Ø x 1.5 mm thick stainless tube for horizontal members. Buffing finish.
- 15.4. Corridor Railing – Provide 2” x 2” x 2 mm thick rectangular tube for handrail; 2” x 2” x 2mm thick rectangular tube for vertical members; 25 mm x 6mm thk flat bar for horizontal members. All joints must be welded together. Paint finish.

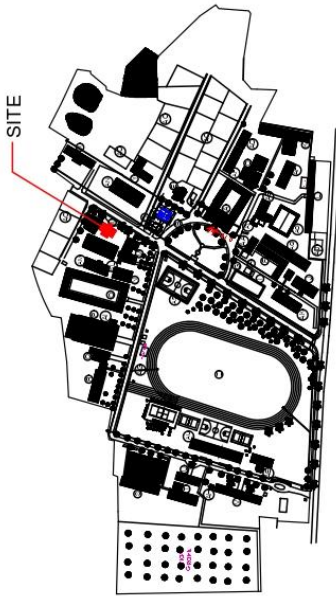
Section VII. Drawings

TABLE OF CONTENTS		REVISIONS		PROJECT NO.		SHEET NO.		
<p>REPUBLIC OF THE PHILIPPINES DEPARTMENT OF PUBLIC WORKS AND HIGHWAYS OFFICE OF THE BUILDING OFFICIALS</p> <p>DISTRICT CITY MUNICIPALITY</p> <p>LAND USE AND ZONING</p> <p>LINE AND GRADE</p> <p>ARCHITECTURAL</p> <p>STRUCTURAL</p> <p>ELECTRICAL</p> <p>PLUMBING</p> <p>AUXILIARY</p> <p>MECHANICAL</p>	<p>ARCHITECTURAL</p> <p>VEHICLE PARKING</p> <p>VEHICULAR DRIVEWAY</p> <p>GROUND FLOOR PLAN</p> <p>FIRST FLOOR PLAN</p> <p>FLIGHT STAIR ELEVATION</p> <p>FRONT SIDE ELEVATION</p> <p>REAR SIDE ELEVATION</p> <p>SCHEDULE OF DOORS & WINDOWS</p> <p>DETAILS OF DOORS & WINDOWS</p> <p>DETAILS OF STAIRS & GALLIES</p> <p>STAIR BALUSTRADES</p> <p>RAAMP UP/PAVING DETAILS</p>	<p>REVISIONS</p> <p>MARK</p> <p>DATE</p>	<p>PROJECT NO.</p> <p>DESIGNED BY:</p> <p>CHECKED BY:</p>	<p>SHEET NO.</p> <p>A-01</p>				
	<p>STRUCTURAL</p> <p>CONSTRUCTION NOTES</p> <p>TYPICAL DETAILS</p> <p>FOUNDATION DETAILS</p> <p>FOUNDATION PLAN</p> <p>FOUNDATION ELEVATION</p> <p>THIRD FLOOR FINISHING PLAN</p> <p>COLUMN/FOOTING DETAIL</p> <p>CEILING/ROOFING</p> <p>CEILING/ROOFING PLAN</p> <p>SCHEDULE OF WALL FINISHES</p> <p>SLAB DETAILS</p> <p>STAIR DETAILS</p> <p>STAIR CASE</p> <p>FR. DETAIL</p>							
	<p>ELECTRICAL</p> <p>GROUND FLOOR ELECTRICAL PANEL LAYOUT</p> <p>SECOND FLOOR ELECTRICAL PANEL LAYOUT</p> <p>THIRD FLOOR ELECTRICAL PANEL LAYOUT</p> <p>WIRING DIAGRAM</p> <p>WIRING SCHEDULES & SPECIFICATIONS</p> <p>LEGEND</p>							
	<p>PLUMBING</p> <p>GROUND FLOOR WATER LINE LAYOUT PLAN</p> <p>SECOND FLOOR WATER LINE LAYOUT PLAN</p> <p>THIRD FLOOR WATER LINE LAYOUT PLAN</p> <p>SECOND FLOOR SEWER LINE LAYOUT PLAN</p>							
	<p>AUXILIARY</p> <p>AUX-01 LAR NETWORK LAYOUT</p>							



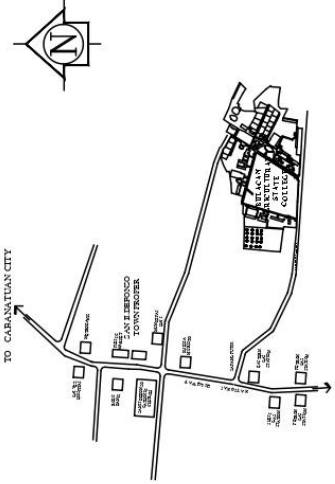
PERSPECTIVE VIEW

NOT TO SCALE



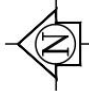
SITE DEVELOPMENT PLAN


NOT TO SCALE

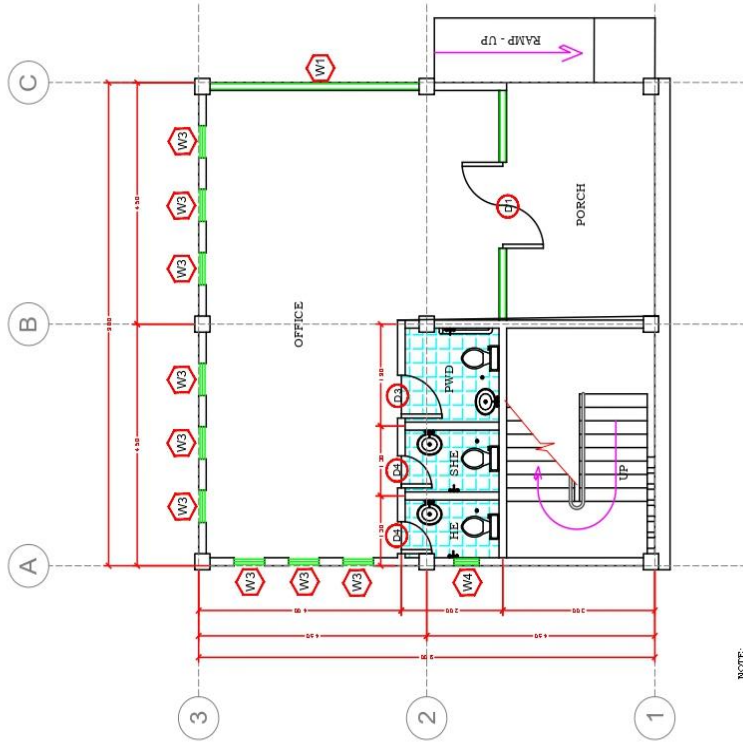


VICINITY MAP

NOT TO SCALE



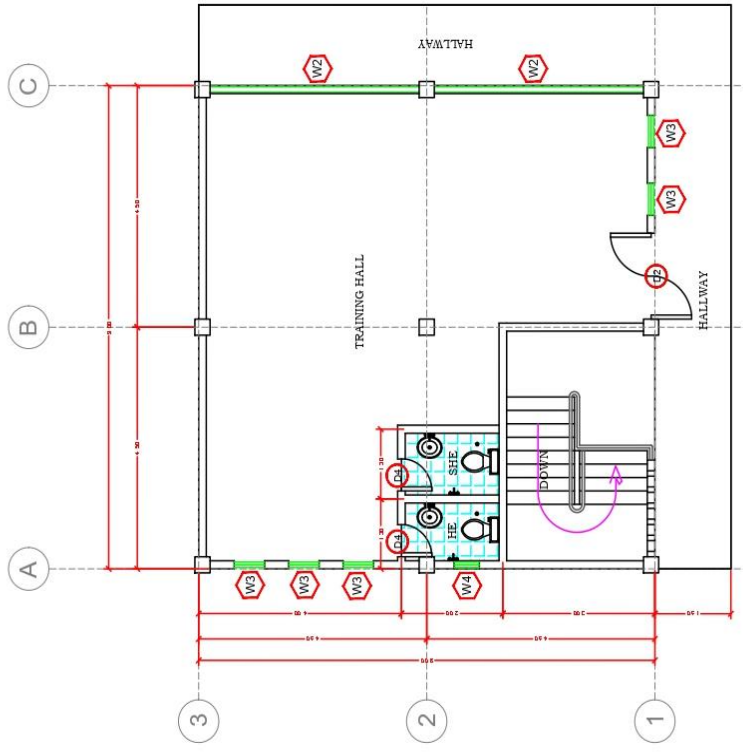
OWNER	DESIGNED BY	PROJECT TITLE	APPROVED BY	SHEET CONTENT
 BULACAN AGRICULTURAL STATE COLLEGE ADDRESS: PROVOZ, SAN ILDEFONSO, BULACAN	CIVIL ENGINEER REGISTERED PROFESSIONAL ARCHITECT PRC NO.:	PROPOSED REHABILITATION OF BASIC INTERNET CAFE LOCATION: BPOZ ZIMAGAO, SAN ILDEFONSO, BULACAN	JOHN EDWARD Y. CRUZ, M.A.S. DIRECTOR - PLANNING & DEVELOPMENT JAMESON H. TAN, E.A.D. PRINCIPAL	RESPECTIVE DRAWING VICINITY MAP SITE DEVELOPMENT PLAN




NOTE: CONTRACTOR SHALL VERIFY ALL STRUCTURAL BEAMS AND INTERIOR AS STRUCTURAL FINISHED LEVELS IT IS THE CONTRACTOR'S RESPONSIBILITY TO PROVIDE THE NECESSARY SETBACKS FOR ALL SPECIFIED ARCHITECTURAL MATERIAL FINISHES.

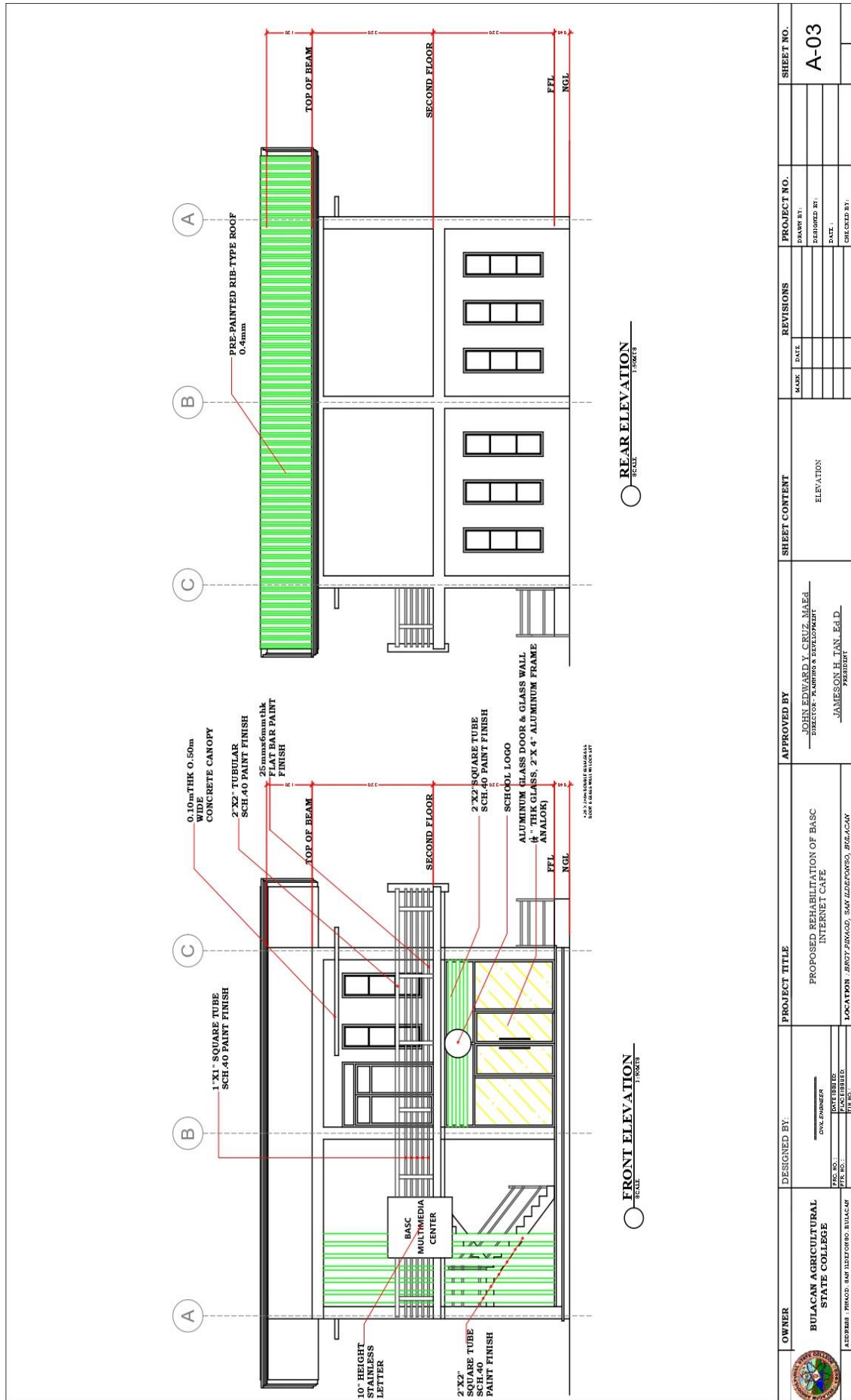
1. PROVIDE 200MM WIDE SERRATED GAP.
2. PROVIDE 200MM WIDE SERRATED GAP.
3. PROVIDE 200MM WIDE SERRATED GAP.
4. ELABORATE OPENING FOR ELECTRICAL ROOM SHALL BE POURED WITH CONCRETE AFTER RFR HAS BEEN SET.
5. PROVIDE 200MM WIDE SERRATED GAP.
6. USE OF FFCM BOARD 3.5mm THK OR MORE FOR CEILING INSTALLATION.
7. APPLY CEMENTITIOUS WATERPROOFING COATS ON 2ND FLOOR CF.

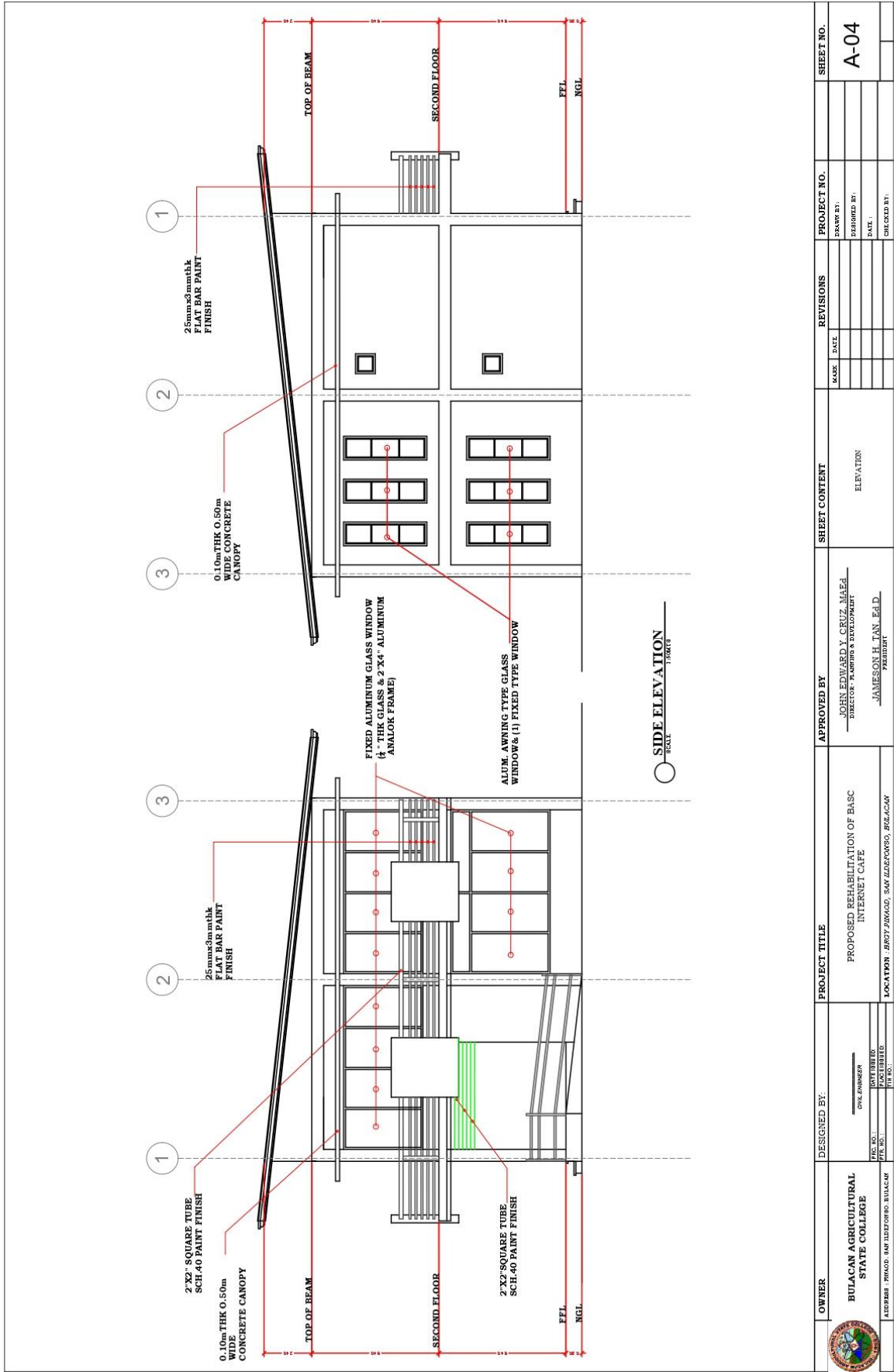
GROUND FLOOR PLAN
SCALE: 1:200 (1/200)




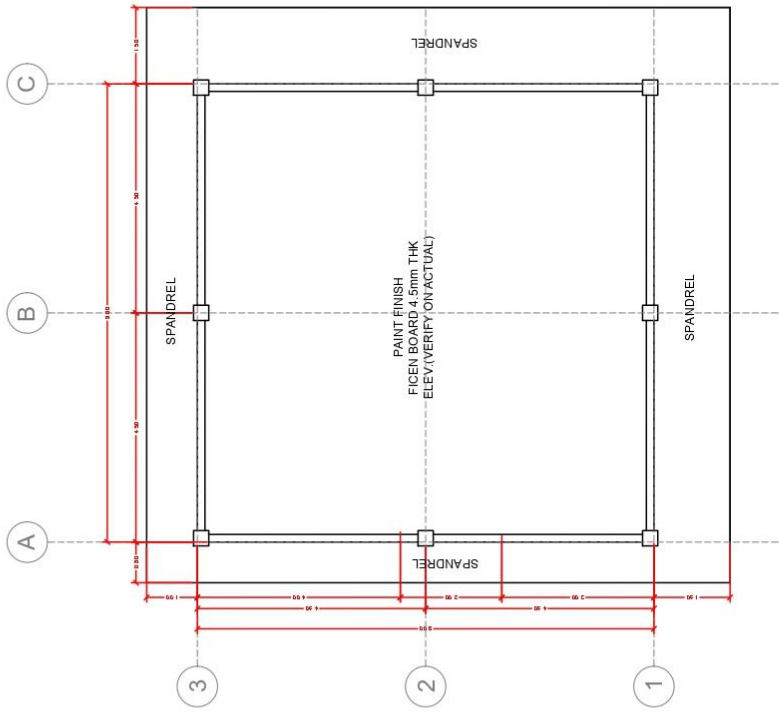
SECOND FLOOR PLAN
SCALE: 1:200 (1/200)

 OWNER BULACAN AGRICULTURAL STATE COLLEGE <small>ADDRESS : BRIGADA 5000, SAN ILDEFONSO, BULACAN</small>	DESIGNED BY:	PROJECT TITLE	APPROVED BY:	SHEET CONTENT	REVISIONS	PROJECT NO.	SHEET NO.																	
	<small>DATE: _____</small> <small>SCALE: _____</small> <small>PROJECT NO.: _____</small> <small>DATE: _____</small>	PROPOSED REHABILITATION OF BASIC INTERNET CAFE	JOHN EDWARD Y. CRUZ MAEDA <small>DIRECTOR, PLANNING & DEVELOPMENT</small> JAMESON H. TAN, Ed.D. <small>PROFESSOR</small>	GROUND FLOOR PLAN	<table border="1"> <thead> <tr> <th>NO.</th> <th>DATE</th> <th>REVISIONS</th> </tr> </thead> <tbody> <tr> <td> </td> <td> </td> <td> </td> </tr> <tr> <td> </td> <td> </td> <td> </td> </tr> <tr> <td> </td> <td> </td> <td> </td> </tr> <tr> <td> </td> <td> </td> <td> </td> </tr> </tbody> </table>	NO.	DATE	REVISIONS													_____ <small>DATE: _____</small>	_____ <small>DATE: _____</small>	_____ <small>DATE: _____</small>	_____ <small>DATE: _____</small>
NO.	DATE	REVISIONS																						
<small>PROJECT NO.: _____</small> <small>DATE: _____</small>	LOCATION : BRIGADA 5000, SAN ILDEFONSO, BULACAN	_____ <small>DATE: _____</small>	_____ <small>DATE: _____</small>	_____ <small>DATE: _____</small>	_____ <small>DATE: _____</small>	_____ <small>DATE: _____</small>	_____ <small>DATE: _____</small>																	




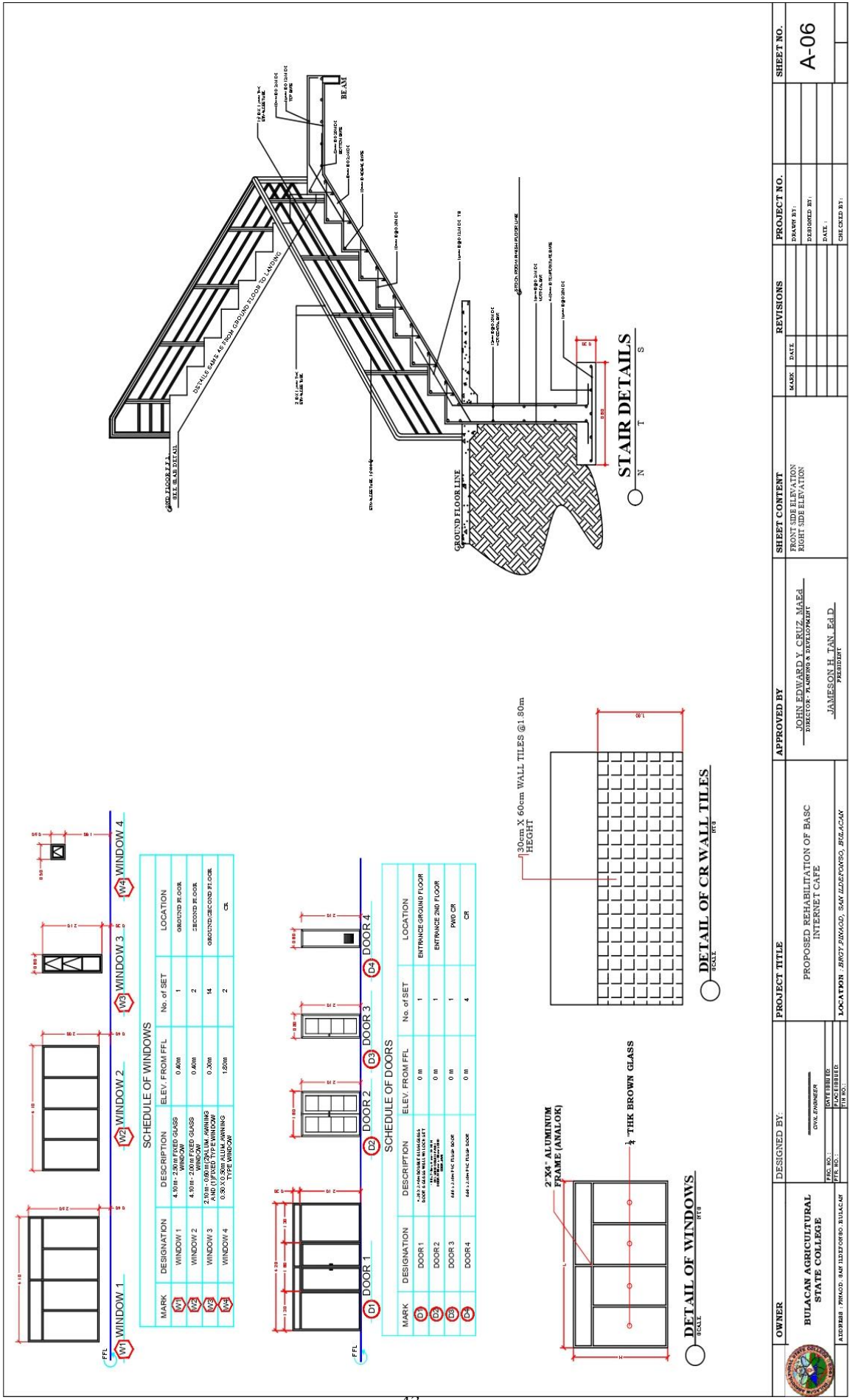


	OWNER	DESIGNED BY:	PROJECT TITLE	APPROVED BY:	SHEET CONTENT	REVISIONS	PROJECT NO.	SHEET NO.
	BILACAN AGRICULTURAL STATE COLLEGE ADDRESS: PINKAD, SAN LUIS TERNOS, BULACAN	DR. JOY TIBURIO CIVIL ENGINEER REG. NO.: _____ PRACTICING NO.: _____ EXP. NO.: _____	PROPOSED REHABILITATION OF BASIC INTERNET CAFE LOCATION: BROT. BRAGA, SAN LUIS TERNOS, BULACAN	JOHN EDWARD Y. CRUZ, MAEd DIRECTOR: PLANNING & DEVELOPMENT JAMESON H. TAN, EdD ARCHITECT	ELEVATION	NO. DATE 	DRAWN BY: DESIGNED BY: CHECKED BY:	A-04



SECOND FLOOR
REFLECTED CEILING PLAN

 OWNER BULACAN AGRICULTURAL STATE COLLEGE <small>ADDRESS: PWDOS, SAN ISIDORO, BULACAN</small>	DESIGNED BY: CIVIL ENGINEER <small>REG. NO.: P.LICENSE NO.: P.LICENSE NO.:</small>	PROJECT TITLE PROPOSED REHABILITATION OF BASIC INTERNET CAFE <small>LOCATION: BGCY ZAWGO, SAN ISIDORO, BULACAN</small>	APPROVED BY JOHN EDWARD Y. CRUZ, MAED <small>DIRECTOR, PLANNING & DEVELOPMENT</small> JAMESON H. TAN, E.A.D. <small>REGISTERED</small>	SHEET CONTENT SPANDEL ELEVATION RIGHT SIDE ELEVATION	REVISIONS <table border="1"> <thead> <tr> <th>NO.</th> <th>DATE</th> <th>DESCRIPTION</th> </tr> </thead> <tbody> <tr> <td> </td> <td> </td> <td> </td> </tr> <tr> <td> </td> <td> </td> <td> </td> </tr> <tr> <td> </td> <td> </td> <td> </td> </tr> </tbody> </table>	NO.	DATE	DESCRIPTION										PROJECT NO. DRAWN BY: DESIGNED BY: DATE: CHECKED BY:	SHEET NO. A-05
	NO.	DATE	DESCRIPTION																

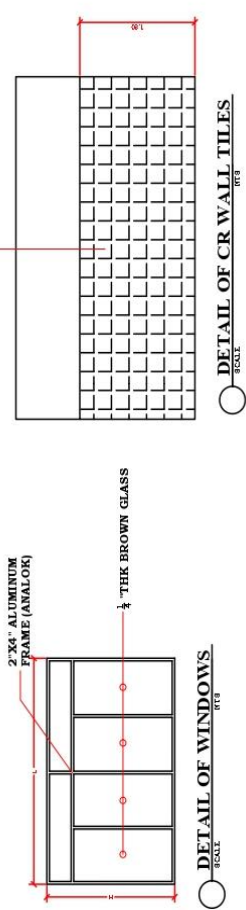


SCHEDULE OF WINDOWS

MARK	DESIGNATION	DESCRIPTION	ELEV. FROM FFL	No. of SET	LOCATION
W1	WINDOW 1	4.10m x 2.00m FIXED GLASS WINDOW	0.60m	1	GROUND FLOOR
W2	WINDOW 2	4.10m x 2.00m FIXED GLASS WINDOW	0.60m	2	SECOND FLOOR
W3	WINDOW 3	2.10m x 1.00m ALUM. WINDOWS	0.30m	14	GROUND SECOND FLOOR
W4	WINDOW 4	0.90m x 1.50m ALUM. WINDOW	1.50m	2	CR.

SCHEDULE OF DOORS

MARK	DESIGNATION	DESCRIPTION	ELEV. FROM FFL	No. of SET	LOCATION
D1	DOOR 1	2.10 x 1.00m ALUM. WINDOWS	0.0m	1	ENTRANCE GROUND FLOOR
D2	DOOR 2	2.10 x 1.00m ALUM. WINDOWS	0.0m	1	ENTRANCE 2ND FLOOR
D3	DOOR 3	1.40 x 2.10m FIBER GLASS DOOR	0.0m	1	PWD CR.
D4	DOOR 4	1.40 x 2.10m FIBER GLASS DOOR	0.0m	4	CR.



<p>OWNER BULACAN AGRICULTURAL STATE COLLEGE</p> <p>A. DORRIBI / PRINC. AND JUDGEFRON B. BALACAN / PRES.</p>	<p>DESIGNED BY: CIVIL ENGINEER</p> <p>DATE:</p>	<p>PROJECT TITLE PROPOSED REHABILITATION OF BASIC INTERNET CAFE</p> <p>LOCATION: BRGT. ZAWAD, SAN JUAN, BULACAN</p>	<p>APPROVED BY: JOHN EDWARD Y. CRUZ, MAEd. DIRECTOR / TRAINING & PARTICIPANT</p> <p>JAMESON H. TAN, Ed.D. PRESIDENT</p>	<p>SHEET CONTENT FRONT SIDE ELEVATION RIGHT SIDE ELEVATION</p>	<p>REVISIONS</p> <table border="1"> <tr> <th>NO.</th> <th>DATE</th> <th>DESCRIPTION</th> </tr> <tr> <td> </td> <td> </td> <td> </td> </tr> </table>	NO.	DATE	DESCRIPTION				<p>PROJECT NO.</p> <p>DRAWN BY:</p> <p>CHECKED BY:</p>	<p>SHEET NO. A-06</p>
	NO.	DATE	DESCRIPTION										

GENERAL CONSTRUCTION NOTES

STRUCTURAL SPECIFICATIONS

A. NOTES ON CONCRETE MIXES AND PLACING:

A.1 FOOTING, COLUMNS, SLABS BEAMS, GIRDERS & STAIRS

$f'c = 20.68 \text{ MPa}$ [3,000 psi] AT 28 DAYS

A.2 GROUND FLOOR SLAB ON FILL

$f'c = 17.24 \text{ MPa}$ [2,500 psi] AT 28 DAYS

A.3 OTHERS NOT SPECIFIED

$f'c = 20.68 \text{ MPa}$ [3,000 psi] AT 28 DAYS

A.4 CONCRETE SHALL BE DEPOSITED IN ITS FINAL POSITION WITHOUT SEGREGATION, REHANDLING OR FLOWING. PLACING SHALL BE DONE PREFERABLY WITH BUGGIES, BUCKETS, OR WHEEL BARROWS. NO CHUTES WILL BE ALLOWED EXCEPT TO TRANSFER CONCRETE FROM HOPPERS TO BUGGIES, WHEEL BARROWS OR BUCKETS IN WHICH CASE THEY SHALL NOT EXCEED SIX THOUSAND [6000 mm] IN AGGREGATE LENGTH.

NO DEPOSITING OF CONCRETE SHALL BE ALLOWED WITHOUT THE USE OF VIBRATORS UNLESS AUTHORIZED IN WRITING BY THE DESIGNERS AND ONLY FOR UNUSUAL CONDITIONS WHERE VIBRATORS IS EXTREMELY DIFFICULT TO ACCOMPLISH.

B. NOTES ON REINFORCEMENTS:

B.1 ALL MILD REINFORCING BARS SHALL BE ROUND * DEFORMED STRUCTURAL GRADE * CONFORMING TO ASTM A-615
 $f_y = 275 \text{ MPa}$ [40 ksi] [12mm ϕ AND BELOW], $f_y = 415 \text{ MPa}$ [60ksi] [16mm ϕ AND ABOVE]

B.2 ALL REINFORCING BAR DIAMETER IN MILLIMETER INDICATED ON THE PLANS SHOULD BE STRICTLY FOLLOWED. ANY DEVIATION FROM THOSE SPECIFIED SHALL HAVE THE WRITTEN APPROVAL OF THE STRUCTURAL ENGINEER.

B.3 WHERE SPlicing IS REQUIRED, SLAB, BEAM AND GIRDER REINFORCING BARS SHALL BE SPliced AT QUARTER POINTS AND A MINIMUM LENGTH OF 40 TIMES THE DIAMETER OF THE BAR. [SEE TYPICAL BEAM DETAIL]

B.4 COLUMN VERTICAL BARS SHALL BE SPliced AT MIDDLE THIRD

OF UNSUPPORTED LENGTH, AND A MINIMUM LENGTH OF 40D.

ALSO NOT MORE THAN 50% OF THE TOTAL NUMBER OF BARS SHALL BE SPliced AT ANY GIVEN SECTION.

C. NOTES ON STRUCTURAL STEEL:

C.1 ALL STRUCTURAL STEEL, BOTH ANGLE AND STEEL PLATES SHALL CONFORM TO ASTM A-36 $f_y = 248.16 \text{ MPa}$ [36,000 psi]

C.2 WELDING ELECTRODES SHALL BE E70 XX SERIES.

C.3 MACHINE BOLTS AND ANCHORE BOLTS SHALL CONFORM TO ASTM A-325.

D. NOTES ON FOUNDATION:

D.1 FOUNDATION IS DESIGNED FOR AN ALLOWABLE SOIL BEARING CAPACITY OF 120 kPa. PRIOR TO CONSTRUCTION, THE CONTRACTOR SHALL CONDUCT SOIL BEARING TEST TO VERIFY THE ACTUAL SOIL BEARING CAPACITY AND REPORT IN WRITING TO THE DESIGNER THE ACTUAL SOIL CONDITION AS PER TEST RESULT.

D.2 NO FOOTING SHALL REST ON BACKFILLED MATERIALS.
 D.3 MINIMUM CONCRETE PROTECTION FOR REINFORCEMENT SHALL BE 75 mm. CLEAR FOR CONCRETE DEPOSITED AGAINST THE GROUND AND 50 mm. FOR CONCRETE DEPOSITED AGAINST FORMWORK.

D.4 IN CASES WHERE REQUIRED FOOTING LEVELS SHOW HONEYCOMBED STRUCTURE CONTAINING LOOSE MATERIALS, REMOVE LOOSE MATERIALS AND FILL ALL VOIDS WITH LEAN CONCRETE. USE VIBRATOR TO ASSUME WELL COMPACTED CONCRETE IN ALL PARTITIONS.

E. NOTES ON COLUMN:

E.1 NO PIPES SHALL BE EMBEDDED INSIDE ANY COLUMN.

F. GENERAL NOTES:

F.1 STANDARD CONSTRUCTION PROCEDURES AS PER * NATIONAL BUILDING CODE * AND * NATIONAL STRUCTURAL CODE FOR BUILDINGS * SHOULD BE STRICTLY FOLLOWED IN THE EXECUTION OF THE PROJECT.

F.2 BARS OF REINFORCED CONCRETE EXPOSED TO THE WEATHER SHALL PREFERABLY BE PROTECTED WITH AT LEAST


38 mm. AND IN NO CASE LESS THAN 25 mm. CONCRETE. THIS PROVISION MAY BE WAIVED WHEN ADEQUATE WATER-PROOFING IS PROVIDED. [SEE TYPICAL BEAM DETAIL]

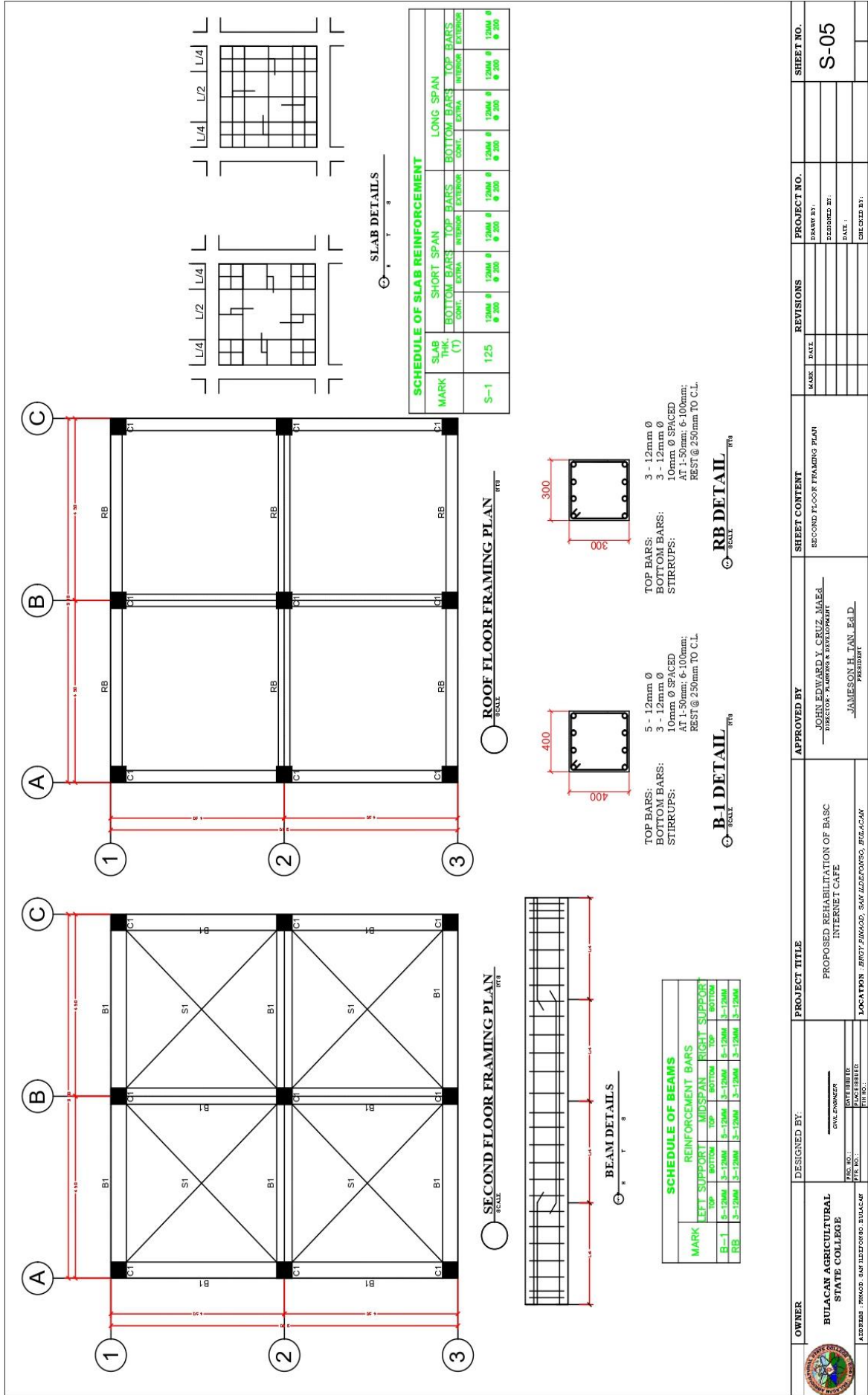
F.3 SLABS ON FILL MUST NOT BE PLACED UNLESS FILL HAS BEEN PROPERLY COMPACTED. ALL SLABS ON FILL SHALL BE PROVIDED WITH 100 mm. CLEAN COARSE SAND BED

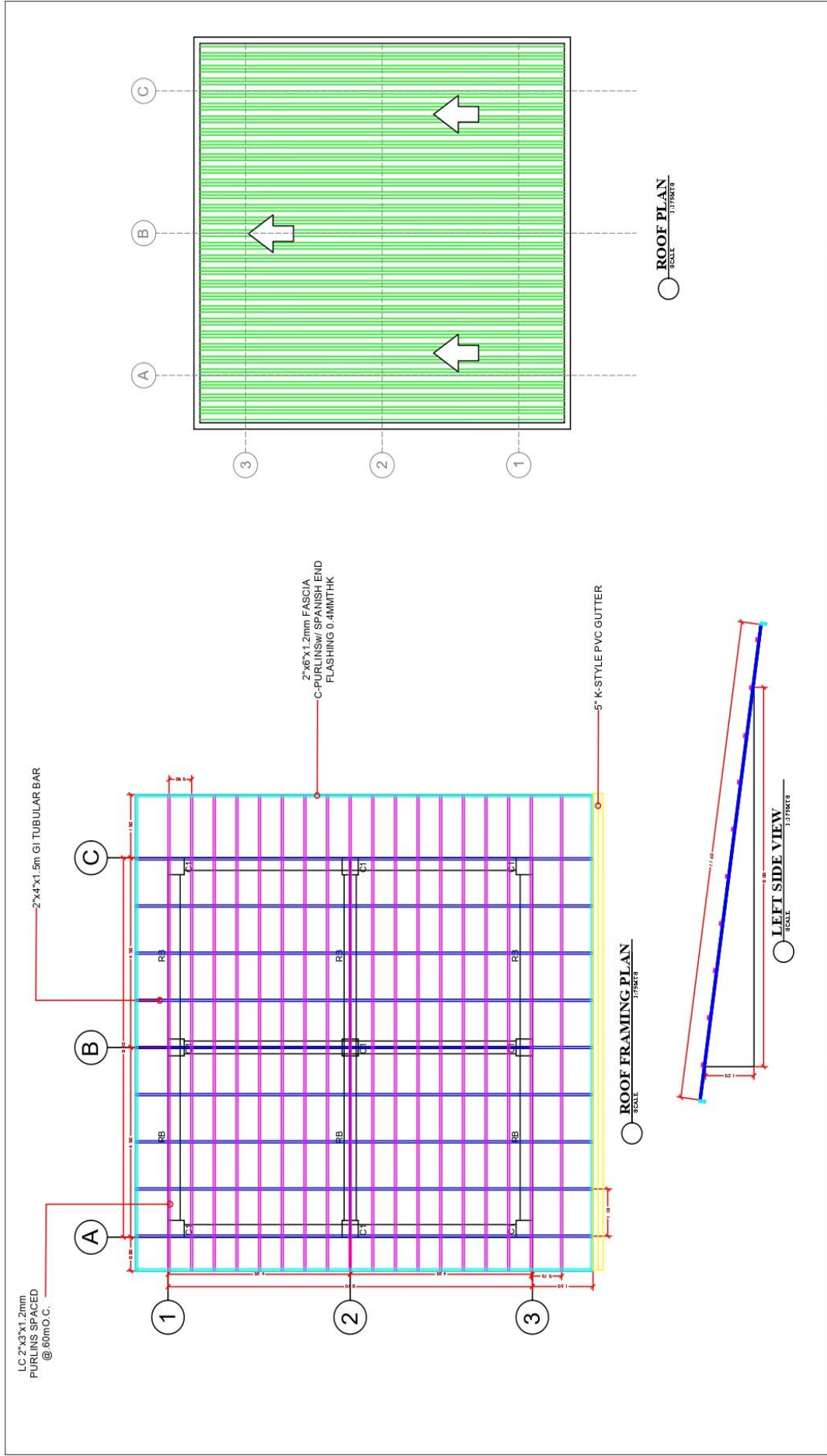
BACKFILLING OF ALL EXCAVATED AREAS AND PREPARATION OF SUB - BASE SHALL BE WELL COMPACTED TO AT LEAST 95% OF THE MODIFIED PROCTOR DENSITY BEFORE LAYING

100 mm. CLEAN COARSE SAND BED.
 F.4 IT SHALL BE THE DUTY AND RESPONSIBILITY OF THE CONTRACTOR TO PROVIDE SHEET PILES, PRECAUTIONARY MEASURES TO ENSURE SAFETY OF ADJACENT PROPERTIES AND OCCUPANTS.

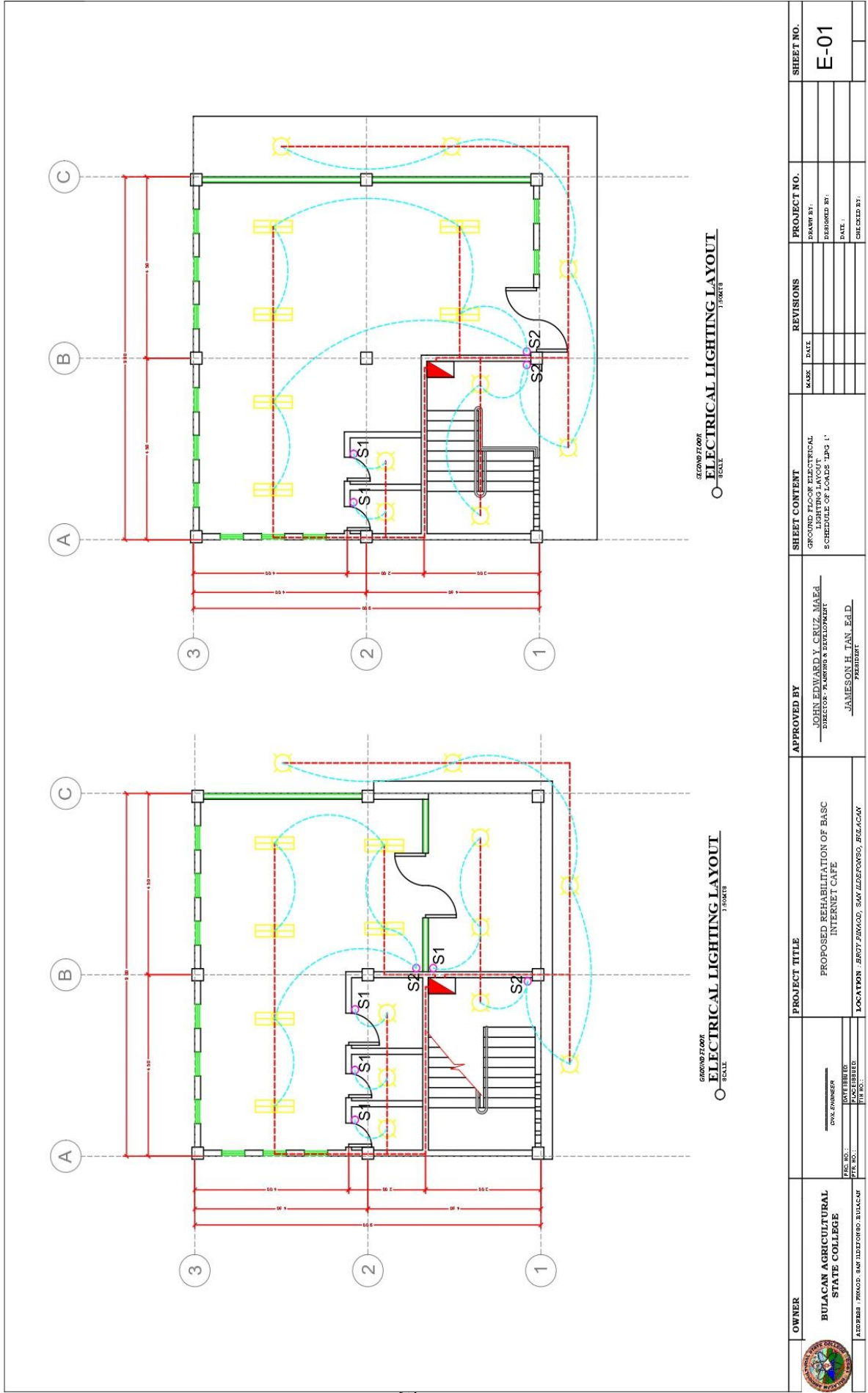
F.5 IN THE INTERPRETATION OF THIS DRAWINGS INDICATED DIMENSIONS SHALL GOVERN AND DISTANCES OR SIZE SHALL NOT BE SCALED FOR CONSTRUCTION PURPOSES.

 OWNER BULACAN AGRICULTURAL STATE COLLEGE <small>ADDRESS: PINGOD, SAN ILDEFONSO, BULACAN</small>	DESIGNED BY: <small>DATE: _____</small> <small>SCALE: _____</small>	PROJECT TITLE PROPOSED REHABILITATION OF BASIC INTERNET CAFE	APPROVED BY: _____ <small>JOHN EDWARD Y. CRUZ, PH.D.</small> <small>DIRECTOR - PLANNING & DEVELOPMENT</small> _____ <small>JAMESON H. TAN, ED.D.</small> <small>PARLIAMENT</small>	SHEET CONTENT GENERAL NOTES	REVISIONS	PROJECT NO.	SHEET NO.
	<small>DATE: _____</small> <small>DATE: _____</small> <small>DATE: _____</small> <small>DATE: _____</small>	<small>DATE: _____</small> <small>DATE: _____</small> <small>DATE: _____</small> <small>DATE: _____</small>	<small>DATE: _____</small> <small>DATE: _____</small> <small>DATE: _____</small> <small>DATE: _____</small>	<small>DATE: _____</small> <small>DATE: _____</small> <small>DATE: _____</small> <small>DATE: _____</small>	DRAWN BY: _____ CHECKED BY: _____ DATE: _____	PROJECT NO.: _____ SHEET NO.: S-03	

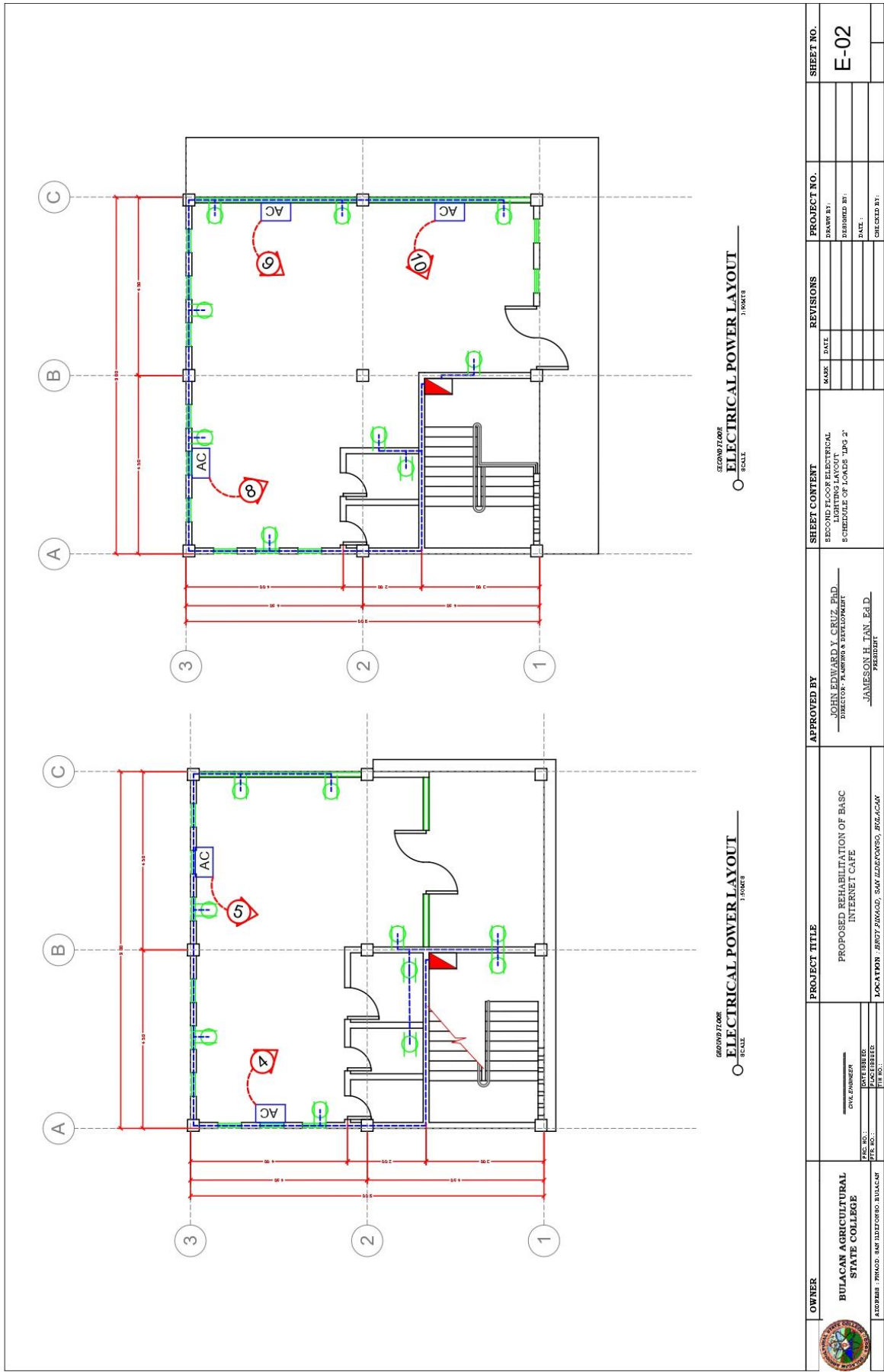





 BULACAN AGRICULTURAL STATE COLLEGE ADDRESS: PRIMO, MARILUZORNO, BULACAN	DESIGNED BY: CIVIL ENGINEER NAME: _____ REG. NO.: _____ PRC NO.: _____ TITLE: _____	PROJECT TITLE PROPOSED REHABILITATION OF BASIC INTERNET CAFE LOCATION: BUNY ZAWAO, SAN MARCOS, BULACAN	APPROVED BY _____ JOHN EDWARD Y. CRUZ, MAEd DIRECTOR: PLANNING & DEVELOPMENT _____ JAMESON H. TAN, EdD PRESIDENT	SHEET CONTENT THIRD FLOOR FRAMING PLAN THIRD FLOOR FRAMING PLAN SCHEDULE OF FOOTING C-1 DETAIL FIG. 1 DETAIL	REVISIONS <table border="1"> <thead> <tr> <th>NO.</th> <th>DATE</th> <th>DESCRIPTION</th> </tr> </thead> <tbody> <tr> <td> </td> <td> </td> <td> </td> </tr> <tr> <td> </td> <td> </td> <td> </td> </tr> <tr> <td> </td> <td> </td> <td> </td> </tr> </tbody> </table>	NO.	DATE	DESCRIPTION										PROJECT NO. DRAWN BY: DESIGNED BY: DATE: CHECKED BY:	SHEET NO. S-05
	NO.	DATE	DESCRIPTION																





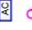
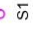
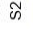








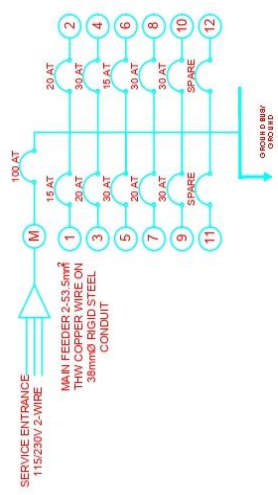
OWNER BULACAN AGRICULTURAL STATE COLLEGE ADDRESS / PRADO, SAN ILDEFONSO, BULACAN	PROJECT TITLE PROPOSED REHABILITATION OF BASIC INTERNET CAFE LOCATION: BERTY ZAWOOD, SAN ILDEFONSO, BULACAN	APPROVED BY JOHN EDWARD Y. CRUZ, MAEd DIRECTOR - PLANNING & DEVELOPMENT JAMESON H. TAN, Ed.D. PRESIDENT	SHEET CONTENT GROUND FLOOR ELECTRICAL LIGHTING LAYOUT SCHEDULE OF BOARDS 1P & 1'	REVISIONS		PROJECT NO.	SHEET NO. E-01
				DATE: _____ CHECKED BY: _____ DATE: _____ CHECKED BY: _____	DATE: _____ CHECKED BY: _____		



 OWNER BULACAN AGRICULTURAL STATE COLLEGE <small>ADDRESS : PAVAN, BULACAN, CALABARZON, LAGUNA</small>	<small>DATE SUBMITTED:</small> <small>DATE REC'D:</small> <small>FILE NO.:</small>	PROJECT TITLE PROPOSED REHABILITATION OF BASIC INTERNET CAFE <small>LOCATION : BGCY ZWALD, SAN ILDEFONSO, BULACAN</small>	APPROVED BY JOHN EDWARD Y. CRUZ, PhD. <small>DIRECTOR, PAVAN & DEVELOPMENT</small> JAMESON H. TAN, Ed.D. <small>PRESIDENT</small>	SHEET CONTENT SECOND FLOOR ELECTRICAL SCHEDULE OF LOADS 1000 2"	<table border="1"> <thead> <tr> <th>NO.</th> <th>DATE</th> <th>REVISIONS</th> </tr> </thead> <tbody> <tr> <td> </td> <td> </td> <td> </td> </tr> </tbody> </table>	NO.	DATE	REVISIONS				PROJECT NO. <small>DRAWN BY:</small> <small>DESIGNED BY:</small> <small>DATE:</small> <small>CHECKED BY:</small>	SHEET NO. E-02
	NO.	DATE	REVISIONS										

LEGEND:

-  LED BULB
-  LOUWER MOUNTED LIGHT
-  CONVENIENCE OUTLET
-  EXHAUST FAN OUTLET
-  PANEL BOX
-  AIR CONDITION OUTLET
-  SWITCH
-  S1
-  S2
-  2 GANG SWITCH
-  OUTLET LINE
-  LIGHTING LINE
-  SWITCH LINE



ONE LINE DIAGRAM
NOT TO SCALE

SCHEDULE OF LOADS

OKN NO.	# OF OUTLETS	LOAD DESCRIPTION	VOLTAGE	RATING	AMPERE	CIRCUIT BREAKER	WIRE CONDUIT
1	22	LIGHTING	230	2200	9.55	15 AMP	2.0mm ² / 13mm CONDUIT
2	8	CONVENIENCE OUTLET	230	1400	6.26	20 AMP	3.5mm ² / 20mm CONDUIT
3	3	EXHAUST FAN OUTLET	230	540	2.35	20 AMP	3.5mm ² / 20mm CONDUIT
4	1	AC OUTLET	230	2331	10.13	30 AMP	5.5mm ² / 20mm CONDUIT
5	1	AC OUTLET	230	2331	10.13	30 AMP	5.5mm ² / 20mm CONDUIT
6	20	LIGHTING	230	1400	8.70	15 AMP	2.0mm ² / 13mm CONDUIT
7	8	CONVENIENCE OUTLET	230	1400	6.26	20 AMP	3.5mm ² / 20mm CONDUIT
8	1	AC OUTLET	230	2331	10.13	30 AMP	5.5mm ² / 20mm CONDUIT
9	1	AC OUTLET	230	2331	10.13	30 AMP	5.5mm ² / 20mm CONDUIT
10	1	AC OUTLET	230	2331	10.13	30 AMP	5.5mm ² / 20mm CONDUIT
11		SPARE					
12		SPARE					
				TOTAL	19,195 WATTS		

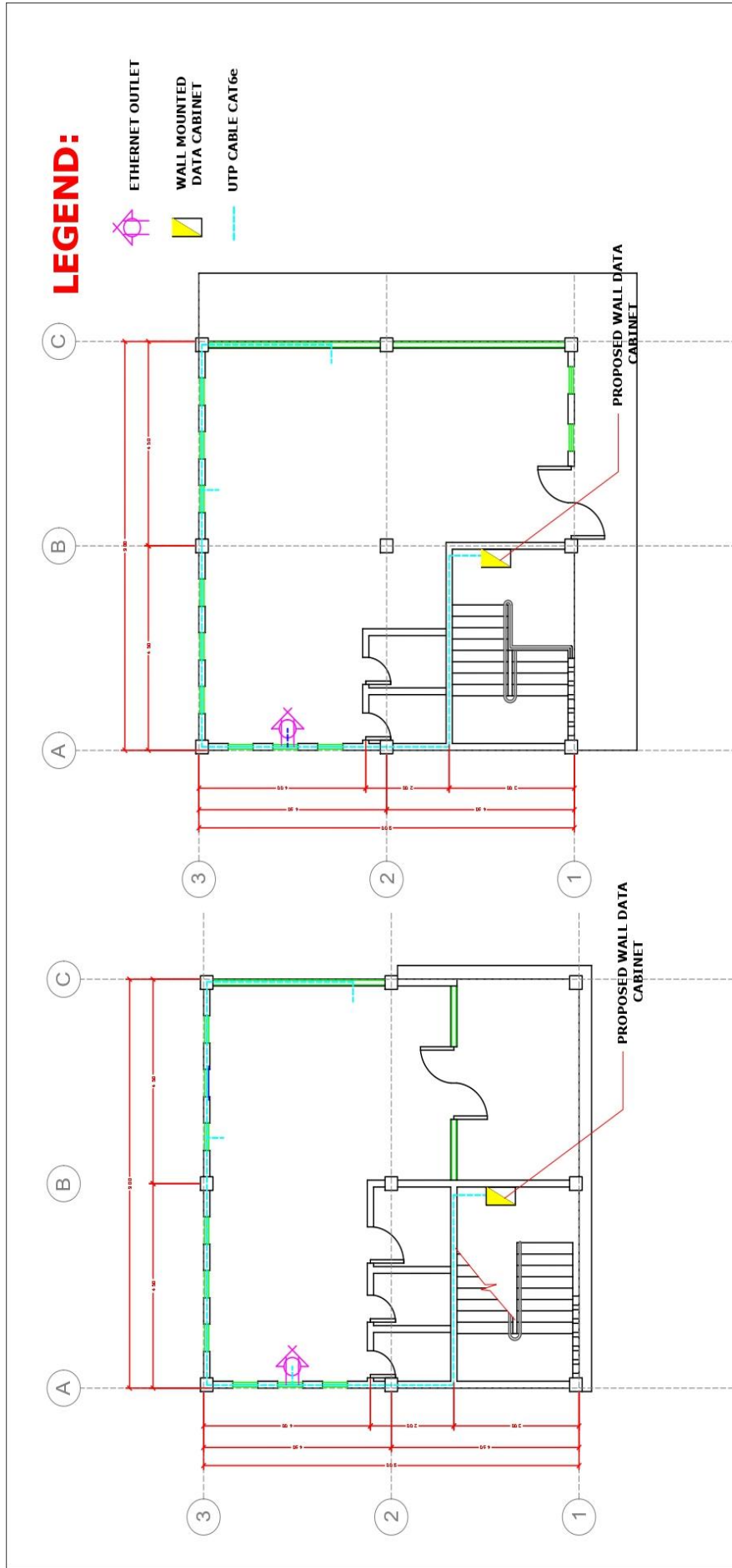
COMPUTATION:
 $I_T = \frac{10,000 + 19,195 (0.40)}{230} = 76.86 \text{ AMP.}$

USE 2-53.5mm² THW ON 38mmØ RSC
 MAIN CIRCUIT BREAKER: 100 AT, SINGLE PHASE




GENERAL NOTES :

- ALL ELECTRICAL INSTALLATIONS SHALL BE DONE IN WORKMANLIKE MANNER AND IN ACCORDANCE WITH THE APPLICABLE REQUIREMENTS OF THE LATEST EDITION OF THE PHILIPPINE ELECTRICAL CODE (P.E.C.), NATIONAL BUILDING CODE OF THE PHILIPPINES, THE RULES & REGULATIONS OF BULACAN & THE REQUIREMENTS OF THE POWER COMPANY.
- GROUNDING SHALL BE IN ACCORDANCE WITH THE APPLICABLE REQUIREMENTS OF THE LATEST EDITION OF THE PHILIPPINE ELECTRICAL CODE. ALL NON-CURRENT CARRYING METAL PARTS OF ELECTRICAL EQUIPMENT FRAMES OR ENCLOSURES SHALL BE CONNECTED TO EQUIPMENT GROUNDING SYSTEM WIRE WITH SOFT DRAWN COPPER WIRE & SUITABLE TERMINAL LUGS.
- THE CONTRACTOR SHALL BE RESPONSIBLE FOR COORDINATING THE WORK AMONG THE VARIOUS TRADES AS NECESSARY TO AVOID CONFLICTS AND TO INSURE THE INSTALLATION OF ALL WORKS WITHIN THE AVAILABLE SPACE. MINIMUM SIZE OF WIRE TO BE USED FOR POWER AND LIGHTING SHALL BE 2.0mm.
- LAYOUT SHOWN ON THE PLANS ARE DIAGRAMATIC AND SHALL WHEN NECESSARY BE ALTERED IN THE FIELD TO SUIT CONDITIONS AND LOCATION.
- PULL BOXES SHALL BE PROVIDED WHENEVER NECESSARY TO FACILITATE WIRE PULLING EVEN IF THESE ARE NOT INDICATED ON PLANS.
- ALL ELECTRICAL MATERIALS TO BE USED SHALL BE NEW & APPROVED TYPE FOR THE LOCATION AND PURPOSES.
- ALL WORKS SHALL BE DONE BY EXPERIENCED ELECTRICIANS AND UNDER SUPERVISION OF A FULLY LICENSED ELECTRICAL ENGINEER.
- CONDUCT INSULATION TEST ON ALL WIRINGS, FITURES AND DEVICES INSTALLED BEFORE THE COVERING OF THE ELECTRICAL ENCLOSURES AND RECORD THE RESULTS OF INSULATION TEST OF SERVICE ENTRANCE, FEEDERS AND BRANCH CIRCUIT.
- REFER TO ELECTRICAL SPECIFICATIONS FOR SPECIFIC INFORMATIONS.

OWNER BULACAN AGRICULTURAL STATE COLLEGE ALDOBARRI - PINKAD, SAN JUAN DEL MONTE, BULACAN	PROJECT TITLE PROPOSED REHABILITATION OF BASIC INTERNET CAFE LOCATION: BRGY 2-PINKAD, SAN JUAN DEL MONTE, BULACAN	APPROVED BY JOHN EDWARD Y. CRUZ, PH.D. DIRECTOR: PLANNING & DEVELOPMENT JAMESON H. TAN, E.D. PLANNING	SHEET CONTENT LEGEND ONE LINE DIAGRAM SCHEDULE OF LOADS GENERAL NOTES	PROJECT NO.	SHEET NO.
				REVISIONS	E-03
DATE ISSUED: _____		DATE: _____	DATE: _____	DATE: _____	DATE: _____
DRAWN BY: _____		CHECKED BY: _____	DATE: _____	DATE: _____	DATE: _____




LEGEND:

-  ETHERNET OUTLET
-  WALL MOUNTED DATA CABINET
-  UTP CABLE CAT6e

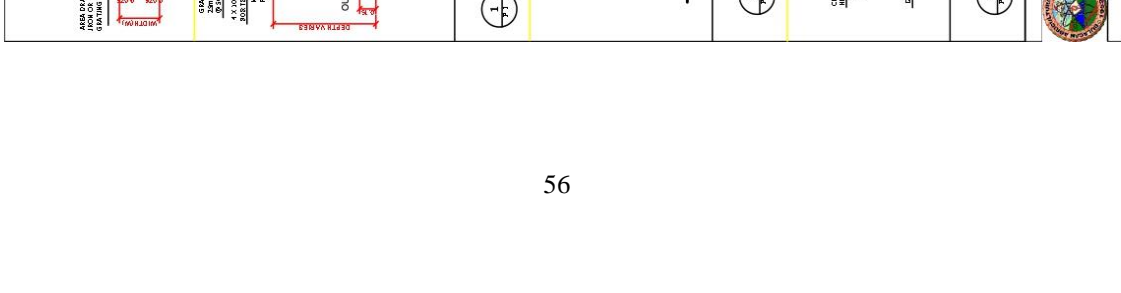
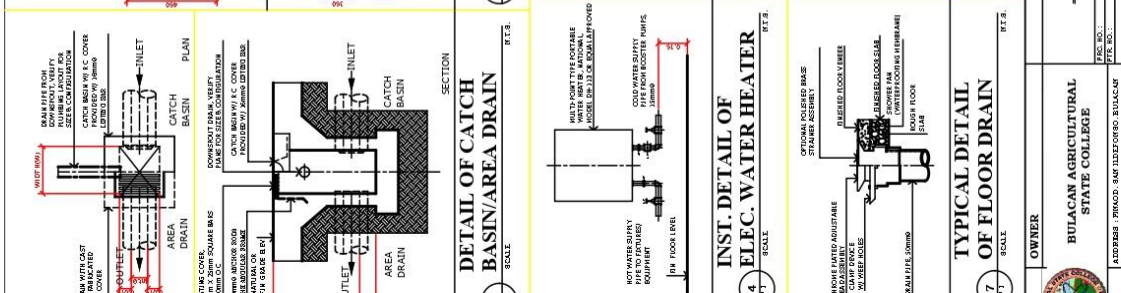
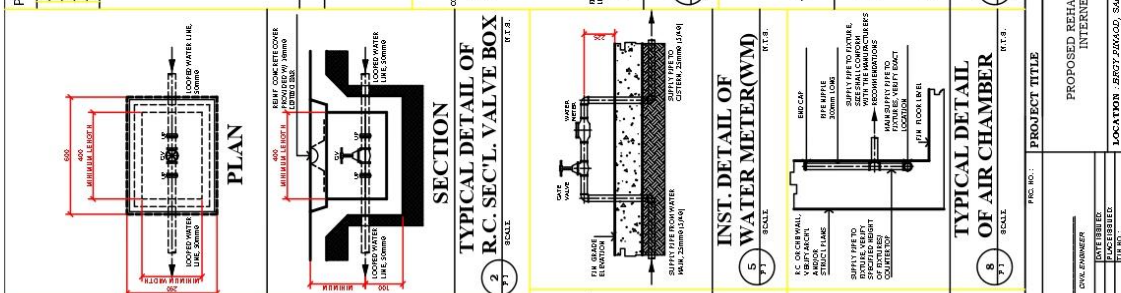
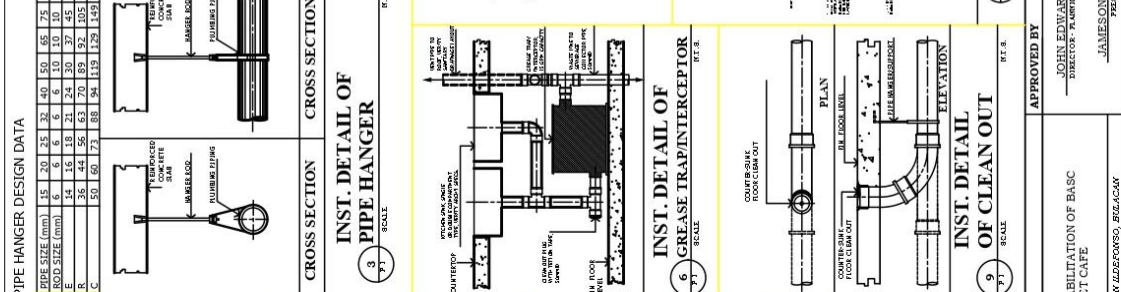
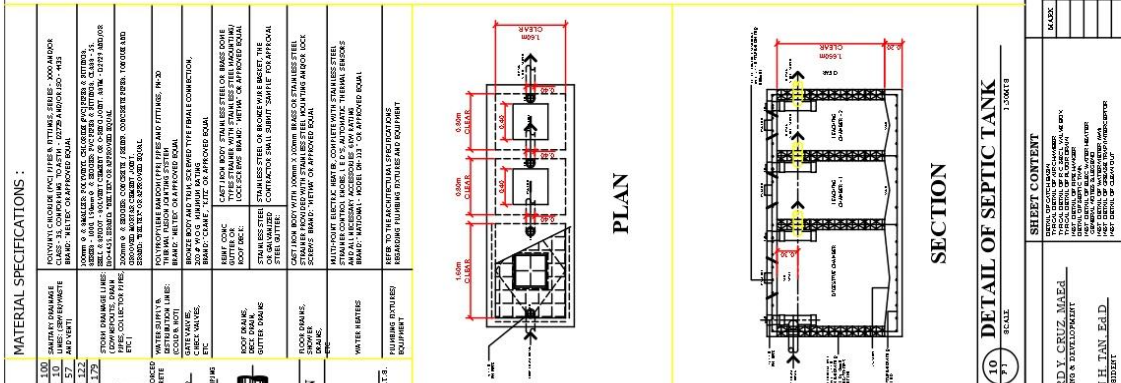
GROUND FLOOR
LAN NETWORK LAYOUT
SCALE: 1/8"=1'-0"

GROUND FLOOR
LAN NETWORK LAYOUT
SCALE: 1/8"=1'-0"

 OWNER BULACAN AGRICULTURAL STATE COLLEGE ADDRESS : BRNOO, SAN ILDEFONSO, BULACAN	PROJECT TITLE PROPOSED REHABILITATION OF BASIC INTERNET CAFE	APPROVED BY JOHN EDWARD Y. CRUZ, PH.D. DIRECTOR - PLANNING & DEVELOPMENT JAMESON H. TAN, Ed.D. PRESIDENT	SHEET CONTENT LAN NETWORK LAYOUT	REVISIONS NO. DATE DESCRIPTION	PROJECT NO. DRAWN BY: DESIGNED BY: CHECKED BY:	SHEET NO. AUX-01
	CIVIL ENGINEER DATE: TIME: PLACE: SIGNATURE: PIN NO.:	LOCATION : BRNOO, SAN ILDEFONSO, BULACAN	LOCATION : BRNOO, SAN ILDEFONSO, BULACAN	LOCATION : BRNOO, SAN ILDEFONSO, BULACAN	LOCATION : BRNOO, SAN ILDEFONSO, BULACAN	LOCATION : BRNOO, SAN ILDEFONSO, BULACAN

GENERAL NOTES

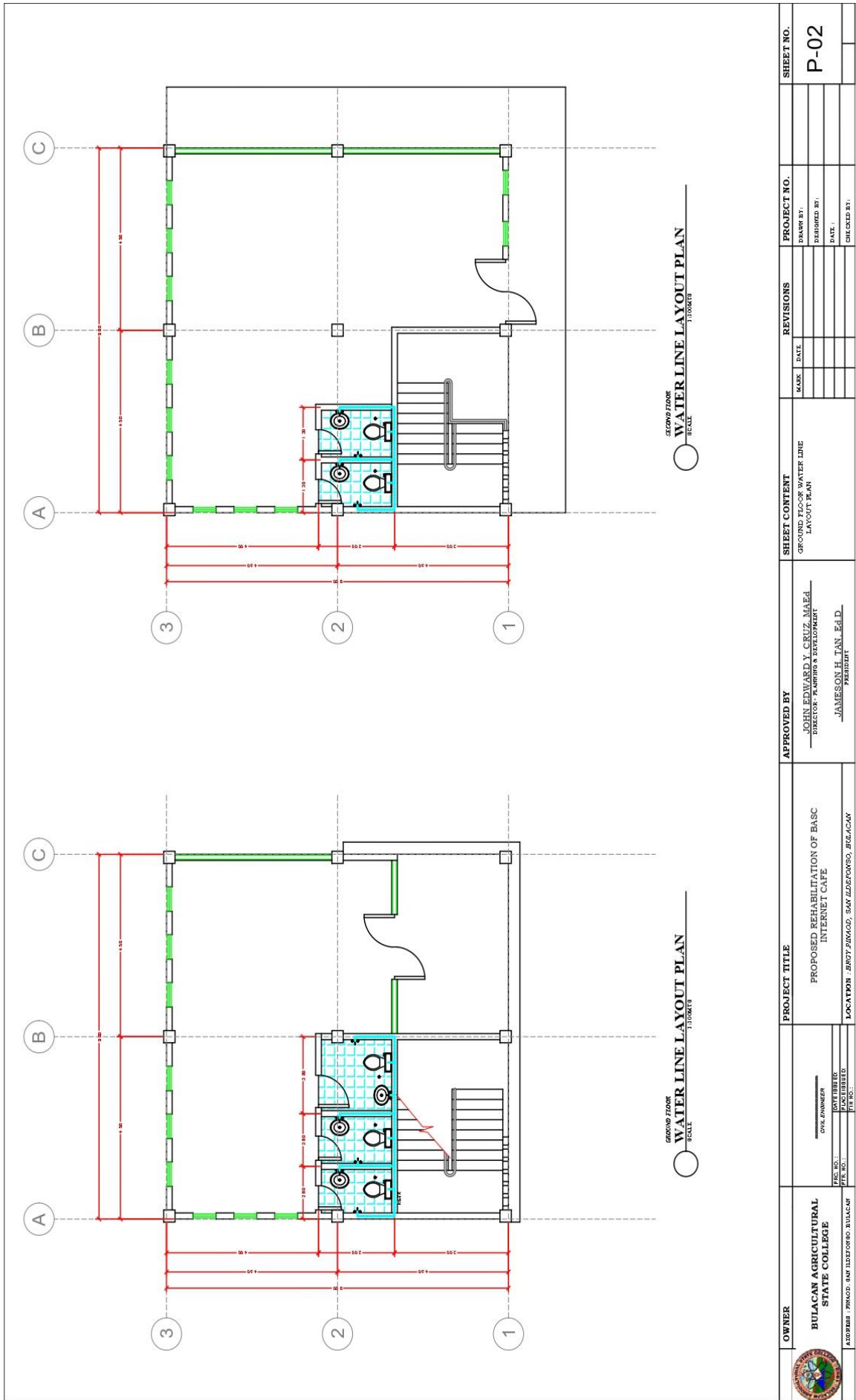
- 1.0 ALL PLUMBING WORKS INCLUDED HEREIN SHALL BE DONE IN CONFORMANCE WITH THE PHILIPPINE PLUMBING CODE, THE NATIONAL BUILDING CODE AND THE LAWS / ORDINANCES OF THE CITY OF MANILA.
- 2.0 COORDINATION OF THE DRAWINGS WITH OTHER RELATED PLANS AND SPECIFICATIONS. THE ENGINEER AND/OR ARCHITECT SHALL BE NOTIFIED IMMEDIATELY OF ANY DISCREPANCY FOUND HEREIN FOR CLARIFICATION AND/OR DECISION.
- 3.0 ALL PIPES SHALL BE INSTALLED AS INDICATED ON THE PLANS AND SPECIFICATIONS. ANY REDUCTION NECESSARY FOR THE PROPER EXECUTION OF THE WORK OF OTHER TRADES SHALL BE WITH PRIOR APPROVAL OF THE ENGINEER AND/OR ARCHITECT.
- 4.0 THE CONTRACTOR SHALL VERIFY ALL EXISTING UTILITIES @ SITE, THE EXACT LOCATION, DEPTH AND INVERT ELEVATIONS FOR PROPER COORDINATION WITH THE PROPOSED SANITARY AND STORM DRAINAGE LINES. EFFLUENT DISCHARGE POINT AND THE WATER SERVICE CONNECTION OR TAPPING POINT.
- 5.0 SLOPES FOR HORIZONTAL SANITARY AND STORM DRAINAGE LINES SHALL BE MAINTAINED @ ONE PERCENT (0.01) AND ONE AND ONE HALF PERCENT (0.015) MINIMUM RESPECTIVELY. UNLESS NOTED ON SPECIFIED OTHERWISE.
- 6.0 PROVIDE AIR CHAMBER MADE OF GALVAP 300mm LONG VERTICAL EXTENSION PIPE TERMINATED @ ONE PERCENT (0.01) SLOPE AND ONE AND ONE HALF PERCENT (0.015) MINIMUM RESPECTIVELY. UNLESS NOTED ON SPECIFIED OTHERWISE.
- 7.0 ALL WATER LINES SHALL BE HYDROSTATICALLY TESTED @ 1.5X THE SANITARY AND STORM DRAINAGE LINE GRAVITY AND/OR LOW TESTED FOR A MINIMUM DURATION OF EIGHT (8) HOURS. THERE SHALL BE NO MANIFEST OF LEAK BEFORE PIPING ARE BURED OR COVERED.
- 8.0 ALL WATER SHALL BE DISCONNECTED WITH AVAILABLE LIQUID CHLORINE FOR TWENTY FOUR (24) HOURS AND RUSHED THOROUGHLY WITH CLEAN POTABLE WATER BEFORE COMMISSIONING AND/OR NORMAL SYSTEM OPERATION.
- 9.0 ALL REVISIONS AND/OR ALTERATIONS MADE DURING CONSTRUCTION SHALL BE PROMPTLY AND ACCURATELY RECORDED. THE PLUMBING CONTRACTOR SHALL FURNISH THE AS-BUILT PLANS TO THE FOLLOWING:
 - (1) ARCHITECT
 - (2) SETS WHITE PRINT AND THE ORIGINAL PLANS, & THE ARCHITECT - CD COPY.
- 10.0 SIZES OF WATER LINES INDICATED ON THE PLANS ARE BASED ON EXTERNAL DIAMETER PER 1917-B (EX. POLYPROPYLENE PIPES).
- 11.0 ALL DIMENSIONS ARE IN METERS AND ALL ARE MILLIMETERS UNLESS OTHERWISE SPECIFIED.



GENERAL NOTES

- 1.0 ALL PLUMBING WORKS INCLUDED HEREIN SHALL BE DONE IN CONFORMANCE WITH THE PHILIPPINE PLUMBING CODE, THE NATIONAL BUILDING CODE AND THE LAWS / ORDINANCES OF THE CITY OF MANILA.
- 2.0 COORDINATION OF THE DRAWINGS WITH OTHER RELATED PLANS AND SPECIFICATIONS. THE ENGINEER AND/OR ARCHITECT SHALL BE NOTIFIED IMMEDIATELY OF ANY DISCREPANCY FOUND HEREIN FOR CLARIFICATION AND/OR DECISION.
- 3.0 ALL PIPES SHALL BE INSTALLED AS INDICATED ON THE PLANS AND SPECIFICATIONS. ANY REDUCTION NECESSARY FOR THE PROPER EXECUTION OF THE WORK OF OTHER TRADES SHALL BE WITH PRIOR APPROVAL OF THE ENGINEER AND/OR ARCHITECT.
- 4.0 THE CONTRACTOR SHALL VERIFY ALL EXISTING UTILITIES @ SITE, THE EXACT LOCATION, DEPTH AND INVERT ELEVATIONS FOR PROPER COORDINATION WITH THE PROPOSED SANITARY AND STORM DRAINAGE LINES. EFFLUENT DISCHARGE POINT AND THE WATER SERVICE CONNECTION OR TAPPING POINT.
- 5.0 SLOPES FOR HORIZONTAL SANITARY AND STORM DRAINAGE LINES SHALL BE MAINTAINED @ ONE PERCENT (0.01) AND ONE AND ONE HALF PERCENT (0.015) MINIMUM RESPECTIVELY. UNLESS NOTED ON SPECIFIED OTHERWISE.
- 6.0 PROVIDE AIR CHAMBER MADE OF GALVAP 300mm LONG VERTICAL EXTENSION PIPE TERMINATED @ ONE PERCENT (0.01) SLOPE AND ONE AND ONE HALF PERCENT (0.015) MINIMUM RESPECTIVELY. UNLESS NOTED ON SPECIFIED OTHERWISE.
- 7.0 ALL WATER LINES SHALL BE HYDROSTATICALLY TESTED @ 1.5X THE SANITARY AND STORM DRAINAGE LINE GRAVITY AND/OR LOW TESTED FOR A MINIMUM DURATION OF EIGHT (8) HOURS. THERE SHALL BE NO MANIFEST OF LEAK BEFORE PIPING ARE BURED OR COVERED.
- 8.0 ALL WATER SHALL BE DISCONNECTED WITH AVAILABLE LIQUID CHLORINE FOR TWENTY FOUR (24) HOURS AND RUSHED THOROUGHLY WITH CLEAN POTABLE WATER BEFORE COMMISSIONING AND/OR NORMAL SYSTEM OPERATION.
- 9.0 ALL REVISIONS AND/OR ALTERATIONS MADE DURING CONSTRUCTION SHALL BE PROMPTLY AND ACCURATELY RECORDED. THE PLUMBING CONTRACTOR SHALL FURNISH THE AS-BUILT PLANS TO THE FOLLOWING:
 - (1) ARCHITECT
 - (2) SETS WHITE PRINT AND THE ORIGINAL PLANS, & THE ARCHITECT - CD COPY.
- 10.0 SIZES OF WATER LINES INDICATED ON THE PLANS ARE BASED ON EXTERNAL DIAMETER PER 1917-B (EX. POLYPROPYLENE PIPES).
- 11.0 ALL DIMENSIONS ARE IN METERS AND ALL ARE MILLIMETERS UNLESS OTHERWISE SPECIFIED.

OWNER	PROJECT TITLE	APPROVED BY	PROJECT NO.	SHEET NO.
BULACAN AGRICULTURAL STATE COLLEGE	PROPOSED REHABILITATION OF BASIC INTERNET CAFE	JOHN EDWARD Y. CRUZ, MAPE DIRECTOR - PLUMBING & DEVELOPMENT		P-01
DATE: _____	SCALE: _____	DATE: _____	REVISIONS:	
DESIGNED BY: _____		DATE: _____		
CHECKED BY: _____		DATE: _____		
DATE: _____		DATE: _____		



OWNER
BULACAN AGRICULTURAL STATE COLLEGE
 ADDRESS: PROOD, SAN ISIDRO TOWN, BULACAN

PROJ. NO.:
 DATE: _____
 DRAWN BY: _____
 CHECKED BY: _____

PROJECT TITLE
 PROPOSED REHABILITATION OF BASIC INTERNET CAFE
 LOCATION: BRGY. PAKAD, SAN ISIDRO TOWN, BULACAN

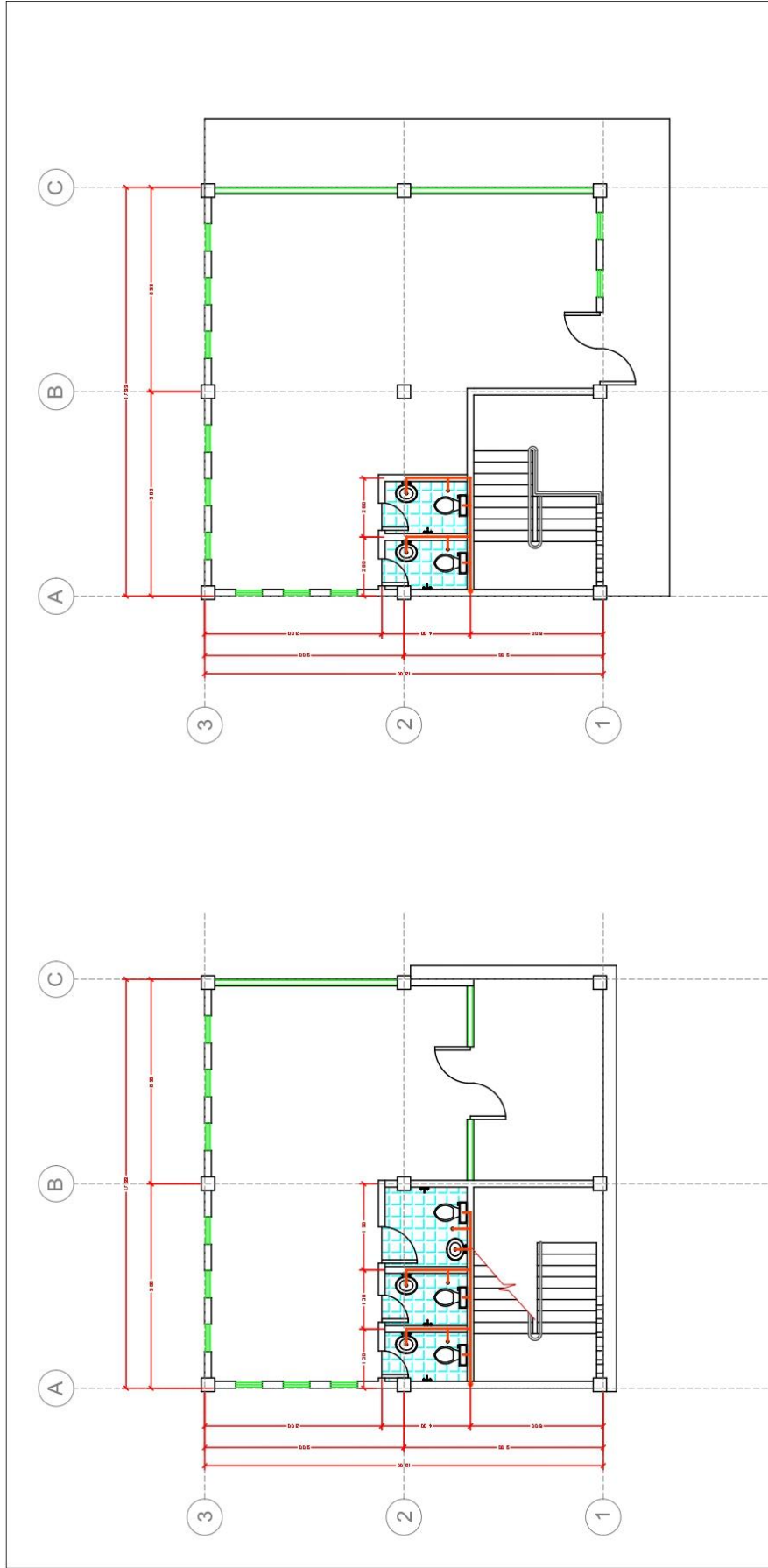
APPROVED BY
 JOHN EDWARD Y. CRUZ, MAEd
 DIRECTOR: PLANNING & DEVELOPMENT
 JAMESON H. TAN, EdD
 PLANNING

SHEET CONTENT
 GROUND FLOOR WATER LINE LAYOUT PLAN

NO.	DATE	REVISIONS


PROJECT NO.
 DRAWN BY:
 DESIGNED BY:
 DATE:
 CHECKED BY:

SHEET NO.
P-02



GROUND FLOOR
SEWER LINE LAYOUT PLAN
SCALE: 1/8" = 1'-0"

GROUND FLOOR
SEWER LINE LAYOUT PLAN
SCALE: 1/8" = 1'-0"

 OWNER BULACAN AGRICULTURAL STATE COLLEGE <small>ADDRESS: TRINIDAD, SAN ILDEFONSO, BULACAN</small>	PROJECT TITLE PROPOSED REHABILITATION OF BASIC INTERNET CAFE <small>LOCATION: BROT SERRANO, SAN ILDEFONSO, BULACAN</small>	APPROVED BY JOHN EDWARD Y. CRUZ, MAED <small>DIRECTOR: PLANNING & DEVELOPMENT</small> JAMESON H. TAN, Ed. D. <small>RESIDENT</small>	SHEET CONTENT GROUND FLOOR SEWER LINE LAYOUT PLAN	REVISIONS <table border="1"> <thead> <tr> <th>NO.</th> <th>DATE</th> <th>BY</th> <th>REVISIONS</th> </tr> </thead> <tbody> <tr> <td> </td> <td> </td> <td> </td> <td> </td> </tr> </tbody> </table>	NO.	DATE	BY	REVISIONS					PROJECT NO. _____ DESIGNED BY: _____ DATE: _____ CHECKED BY: _____	SHEET NO. P-03
	NO.	DATE	BY	REVISIONS										
DATE: _____ FILE NO.: _____ DATE DIBLISHED: _____ SCALE: _____ DATE APPROVED: _____														

Section VIII. Bill of Quantities

Notes on the Bill of Quantities

Objectives

The objectives of the Bill of Quantities are:

- a. to provide sufficient information on the quantities of Works to be performed to enable Bids to be prepared efficiently and accurately; and
- b. when a Contract has been entered into, to provide a priced Bill of Quantities for use in the periodic valuation of Works executed.

In order to attain these objectives, Works should be itemized in the Bill of Quantities in sufficient detail to distinguish between the different classes of Works, or between Works of the same nature carried out in different locations or in other circumstances which may give rise to different considerations of cost. Consistent with these requirements, the layout and content of the Bill of Quantities should be as simple and brief as possible.

Daywork Schedule

A Daywork Schedule should be included only if the probability of unforeseen work, outside the items included in the Bill of Quantities, is high. To facilitate checking by the Entity of the realism of rates quoted by the Bidders, the Daywork Schedule should normally comprise the following:

- a. A list of the various classes of labor, materials, and Constructional Plant for which basic daywork rates or prices are to be inserted by the Bidder, together with a statement of the conditions under which the Contractor will be paid for work executed on a daywork basis.
- b. Nominal quantities for each item of Daywork, to be priced by each Bidder at Daywork rates as Bid. The rate to be entered by the Bidder against each basic Daywork item should include the Contractor's profit, overheads, supervision, and other charges.

Provisional Sums

A general provision for physical contingencies (quantity overruns) may be made by including a provisional sum in the Summary Bill of Quantities. Similarly, a contingency allowance for possible price increases should be provided as a provisional sum in the Summary Bill of Quantities. The inclusion of such provisional sums often facilitates budgetary approval by avoiding the need to request periodic supplementary approvals as the future need arises. Where such provisional sums or contingency allowances are used, the SCC should state the manner in which they will be used, and under whose authority (usually the Procuring Entity's Representative's).

The estimated cost of specialized work to be carried out, or of special goods to be supplied, by other contractors should be indicated in the relevant part of the Bill of Quantities as a particular provisional sum with an appropriate brief description. A separate procurement procedure is normally carried out by the Procuring Entity to select such specialized contractors. To provide an element of competition among the Bidders in respect of any facilities, amenities, attendance, etc., to be provided by the successful Bidder as prime Contractor for the use and convenience of the specialist contractors, each related provisional sum should be followed by an item in the Bill of Quantities inviting the Bidder to quote a sum for such amenities, facilities, attendance, etc.

Signature Box

A signature box shall be added at the bottom of each page of the Bill of Quantities where the authorized representative of the Bidder shall affix his signature. Failure of the authorized representative to sign each and every page of the Bill of Quantities shall be a cause for rejection of his bid.

These Notes for Preparing a Bill of Quantities are intended only as information for the Procuring Entity or the person drafting the Bidding Documents. They should not be included in the final documents.

BILL OF QUANTITIES

ITEM	DESCRIPTION	UNIT	QTY	PHP PRICE
I.	GENERAL REQUIREMENTS			
	Permits & Licenses	Lot	1	
	Temporary Facilities	Lot	1	
	Design Fees	Lot	1	50,000.00
II.	SITE WORKS			
	Site Clearing, Lay-out and grubbing	Lot	1	
III.	STRUCTURAL & CONCRETE WORKS			

	10 mm x 6 m def. bar	pcs	637	
	12 mm x 6 m def. bar	pcs	144	
	16 mm x 6 m def. bar	pcs	172	
	# 16 GI tie wire	Kgs.	210	
	Cement	bags	410	
	Gravel ¾"	cu. m	30	
	Sand	cu. m	59.96	
IV.	FORM WORKS			
	Forms & Scaffoldings	lot	1	
V.	MASONRY WORKS			
	10 mm x 6 m dia. Def. bar	Pcs	196	
	#16 GI tie wire	kgs	30	
	Cement	bags	121	
	Sand	Cu. m	21.86	
	CHB 5"	pcs	1677	
	CHB 4"	pcs	483	
VI.	METAL WORKS			
A.	BALCONY RAILINGS			
	Tubular GI 2 X 2" X 1.2mm	Pcs	30	

	Flat Bar 25mm X 6.5mm	pcs	36	
	Welding rod 5kls per box	box	1	
B.	STAIRS			
	Stainless Tube 1 ½" X 1 3/16"	pcs	5	
	Stainless Tube 2" X 1.5mm, Handrail	pcs	7	
	Stainless Tube 1" X 1.2mm	pcs	4	
	Stair nosing 2.4m	pcs	13	
	QDE paint	gal	2	
	Welding rod 5kls per box	box	1	
	Paintbrush	pcs	2	
C.	OTHERS			
	10" Stainless Letter (BASC MULTIMEDIA CENTER)	lot	1	
VII.	ROOFING AND TINSMITHRY WORKS			
	Tubular Bar GI 2" X 4" X 1.5mm	pcs	19	
	C-Purlin GI 2" X 3" X 1.2mm	pcs	35	
	C-Purlin GI 2" X 7" X 1.2mm	pcs	8	
	Pre painted Rib Type Roofing Long Span 1.1mx20'x0.4mm	shts	23	
	Gutter	lnm	11.40	
	Roof Sealant	gal	1	
	End Flashing	pcs	34	

	Teks Screw 2"	box	6	
	Blind Rivets	box	3	
	Spandrel Eaves 2.97m X 25cm X 8mm	pcs	56	
VIII.	DOORS & WINDOWS			
	Alum Glass Door with Fixed Window (4.20m W X 2.40m Ht.) w/ lockset	set	1	
	PVC Flush Door (0.80m X 2.10m)	set	1	
	PVC Flush Door (0.60m X 2.10m)	set	4	
	Dry Solid Double Panel Door w/ lockset	set	1	
	Door jamb	set	6	
	Door hinges	pcs	21	
	Door lockset	set	7	
	Fixed Glass Window w/ Analok Framing (4.10m W X 2.50m Ht.)	set	1	
	Fixed Glass Window w/ Analok Framing (4.10m W X 2.00m Ht.)	set	2	
	Awning & Fixed Window w/ Analok Framing (0.60m X 2.10m Ht.)	set	14	
	Awning Window w/ Analok Framing (0.50m X 0.50m)	set	2	
IX.	CEILING WORKS (2F ONLY)			
	Fiber Cement Board 4.5mm	pcs	29	
	Wall Angle	pcs	6	

	Carrying Channel 0.8mm X 12mm X 38mm X 5m	pcs	20	
	Metal Furring 0.5mm X 19mm X 50mm X 5m	pcs	36	
	W Clip	pcs	40	
	Blind Rivets (5/32" X 3/4") & (5/32" x 1/2")	box	10	
	Hangers	pcs	40	
X.	ELECTRICAL WORKS			
A.	SERVICE ENTRANCE	set	1	
	Panel board (MAIN 100 AT, single phase)	set	1	
	Circuit Breakers (15 AT, 20 AT, 30 AT)	set	10	
	Consumables	set	1	
B.	LIGHTING			
	LED bulb 16 watts in pin light receptacle	set	18	
	LED tube light	pcs	24	
	Louver Housing Mounted (double tube light)	set	12	
	Junction box	pcs	32	
	Utility box	pcs	12	
	One gang switch	set	6	
	2 gang switch	set	4	
	2.0 mm2 THHN wire	box	5	
	Conduit PVC	pcs	50	

C.	ACU, LAN & CONVENIENCE OUTLET			
	2 gang convenience outlet	set	19	
	ACU convenience outlet	set	5	
	LAN outlet	pcs	2	
	Junction box	pcs	24	
	Utility box	pcs	24	
	3.5 mm2 THHN wire	box	3	
	5.5 mm2 THHN wire	box	3	
	Conduit PVC	pcs	50	
	LAN cable CAT6	lm	200	
XI.	PLUMBING WORKS			
A.	WATER LINE			
	PPR gate valve 20mm	pcs	7	
	PPR check valve	pcs	2	
	PPR pipe 20mm	pcs	16	
	PPR elbow	pcs	23	
	Threaded elbow	pcs	17	
	Threaded tee	pcs	7	
	tee	pcs	5	
	cap	pcs	7	

	Teflon	pcs	11	
B.	SEWER LINE			
	4" PVC pipe	pcs	15	
	3" PVC pipe	pcs	12	
	2" PVC pipe	pcs	4	
	1/8 bent 4" x 2" PVC wye reducer	pcs	5	
	1/8 bent 4" x 3" PVC wye reducer	pcs	5	
	PVC wye 4"	pcs	5	
	1/8 bent 2" elbow	pcs	5	
	1/8 bent 4" elbow	pcs	13	
	4" PVC tee	pcs	4	
	PVC solvent	pcs	7	
	Floor drain 4"	pcs	5	
	Clean out	pcs	5	
	P-trap	pcs	5	
	Cementitious waterproofing	gal	4	
C.	SEPTIC TANK			
	Septic tank	lot	1	
	consumables	lot	1	
D.	PLUMBING FIXTURES			
	Water closet	set	5	

	Lavatory	set	5	
	Stainless bidet	set	5	
	Strainer	pcs	5	
	Lavatory faucet	pcs	5	
	Hose bib faucet	pcs	5	
	Exhaust fan	pcs	5	
E.	MISCELLANEOUS			
	Soap Holder	pcs	5	
	Mirror Glass	pcs	5	
	Tissue Holder	pcs	5	
	Lavatory Cabinet undersink	set	5	
XII.	TILING WORKS			
	Unglazed Tiles 30cm X 30cm	pcs	258	
	Glazed tiles 30 x 60 cm	pcs	403	
	Double Polished Glazed Tiles 60cm x 60cm	pcs	313	
	Unglazed Tiles 60cm X 60cm	pcs	194	
	Tile adhesive	bags	50	
	Grout 2kg	bags	60	
	Consumables	lot	1	

XIII.	PAINTING WORKS			
	Interior & exterior painting	lot	1	
	TOTAL PRICE (inclusive of Labor, Profit, OCM & VAT)			

I hereby certify to comply with all the above technical specifications as per prices quoted in the Bill of Quantities.

Name of Company/Bidder

Signature over Printed Name of Representative

Date

Section IX. Checklist of Technical and Financial Documents

Notes on the Checklist of Technical and Financial Documents

The prescribed documents in the checklist are mandatory to be submitted in the Bid, but shall be subject to the following:

- a. GPPB Resolution No. 09-2020 on the efficient procurement measures during a State of Calamity or other similar issuances that shall allow the use of alternate documents in lieu of the mandated requirements; or
- b. any subsequent GPPB issuances adjusting the documentary requirements after the effectivity of the adoption of the PBDs.

The BAC shall be checking the submitted documents of each Bidder against this checklist to ascertain if they are all present, using a non-discretionary “pass/fail” criterion pursuant to Section 30 of the 2016 revised IRR of RA No. 9184.

Checklist of Technical and Financial Documents

I. TECHNICAL COMPONENT ENVELOPE

Class “A” Documents

Legal Documents

- (a) Valid PhilGEPS Registration Certificate (Platinum Membership) (all pages);
or
- (b) Registration certificate from Securities and Exchange Commission (SEC), Department of Trade and Industry (DTI) for sole proprietorship, or Cooperative Development Authority (CDA) for cooperatives or its equivalent document;
and
- (c) Mayor’s or Business permit issued by the city or municipality where the principal place of business of the prospective bidder is located, or the equivalent document for Exclusive Economic Zones or Areas;
and
- (e) Tax clearance per E.O. No. 398, s. 2005, as finally reviewed and approved by the Bureau of Internal Revenue (BIR).

Technical Documents

- (f) Statement of the prospective bidder of all its ongoing government and private contracts, including contracts awarded but not yet started, if any, whether similar or not similar in nature and complexity to the contract to be bid; **and**
- (g) Statement of the bidder’s Single Largest Completed Contract (SLCC) similar to the contract to be bid, except under conditions provided under the rules;
and
- (h) Philippine Contractors Accreditation Board (PCAB) License;
or
Special PCAB License in case of Joint Ventures;
and registration for the type and cost of the contract to be bid; **and**
- (i) Original copy of Bid Security. If in the form of a Surety Bond, submit also a certification issued by the Insurance Commission;
or
Original copy of Notarized Bid Securing Declaration; **and**
- (j) Project Requirements, which shall include the following:
 - a. Organizational chart for the contract to be bid;
 - b. List of contractor’s key personnel (*e.g.*, Project Manager, Project Engineers, Materials Engineers, and Foremen), to be assigned to the contract to be bid, with their complete qualification and experience data;
 - c. List of contractor’s major equipment units, which are owned, leased, and/or under purchase agreements, supported by proof of ownership or certification of availability of equipment from the equipment lessor/vendor for the duration of the project, as the case may be; **and**
- (k) Original duly signed Omnibus Sworn Statement (OSS);
and if applicable, Original Notarized Secretary’s Certificate in case of a

corporation, partnership, or cooperative; or Original Special Power of Attorney of all members of the joint venture giving full power and authority to its officer to sign the OSS and do acts to represent the Bidder.

Financial Documents

- (l) The prospective bidder's audited financial statements, showing, among others, the prospective bidder's total and current assets and liabilities, stamped "received" by the BIR or its duly accredited and authorized institutions, for the preceding calendar year which should not be earlier than two (2) years from the date of bid submission; **and**
- (m) The prospective bidder's computation of Net Financial Contracting Capacity (NFCC).

Class "B" Documents

- (n) If applicable, duly signed joint venture agreement (JVA) in accordance with RA No. 4566 and its IRR in case the joint venture is already in existence; **or**
duly notarized statements from all the potential joint venture partners stating that they will enter into and abide by the provisions of the JVA in the instance that the bid is successful.

II. FINANCIAL COMPONENT ENVELOPE

- (o) Original of duly signed and accomplished Financial Bid Form; **and**

Other documentary requirements under RA No. 9184

- (p) Original of duly signed Bid Prices in the Bill of Quantities; **and**
- (q) Duly accomplished Detailed Estimates Form, including a summary sheet indicating the unit prices of construction materials, labor rates, and equipment rentals used in coming up with the Bid; **and**
- (r) Cash Flow by Quarter.

Bid Form for the Procurement of Infrastructure Projects

[shall be submitted with the Bid]

BID FORM

Date : _____

Project Identification No. : _____

To: *[name and address of Procuring Entity]*

Having examined the Philippine Bidding Documents (PBDs) including the Supplemental or Bid Bulletin Numbers *[insert numbers]*, the receipt of which is hereby duly acknowledged, we, the undersigned, declare that:

- a. We have no reservation to the PBDs, including the Supplemental or Bid Bulletins, for the Procurement Project: *[insert name of contract]*;
- b. We offer to execute the Works for this Contract in accordance with the PBDs;
- c. The total price of our Bid in words and figures, excluding any discounts offered below is: *[insert information]*;
- d. The discounts offered and the methodology for their application are: *[insert information]*;
- e. The total bid price includes the cost of all taxes, such as, but not limited to: *[specify the applicable taxes, e.g. (i) value added tax (VAT), (ii) income tax, (iii) local taxes, and (iv) other fiscal levies and duties]*, which are itemized herein and reflected in the detailed estimates,
- f. Our Bid shall be valid within the a period stated in the PBDs, and it shall remain binding upon us at any time before the expiration of that period;
- g. If our Bid is accepted, we commit to obtain a Performance Security in the amount of *[insert percentage amount]* percent of the Contract Price for the due performance of the Contract, or a Performance Securing Declaration in lieu of the the allowable forms of Performance Security, subject to the terms and conditions of issued GPPB guidelines² for this purpose;
- h. We are not participating, as Bidders, in more than one Bid in this bidding process, other than alternative offers in accordance with the Bidding Documents;
- i. We understand that this Bid, together with your written acceptance thereof included in your notification of award, shall constitute a binding contract between us, until a formal Contract is prepared and executed; and
- j. We understand that you are not bound to accept the Lowest Calculated Bid or any other Bid that you may receive.
- k. We likewise certify/confirm that the undersigned, is the duly authorized representative of the bidder, and granted full power and authority to do, execute and perform any and all acts necessary to participate, submit the bid, and to sign and execute the ensuing contract for the [Name of Project] of the [Name of the Procuring Entity].

² currently based on GPPB Resolution No. 09-2020

1. We acknowledge that failure to sign each and every page of this Bid Form, including the Bill of Quantities, shall be a ground for the rejection of our bid.

Name: _____

Legal Capacity: _____

Signature: _____

Duly authorized to sign the Bid for and behalf of: _____

Date: _____

[Bidder's Letterhead]

Name of the Procuring Entity : BULACAN AGRICULTURAL STATE COLLEGE

Project: 2023-01-INFRA: Rehabilitation of BASC Internet Café

Location of the Project : San Ildefonso, Bulacan

List of all Ongoing Government & Private Contracts including contracts awarded but not yet started

Business Name : _____
 Business Address : _____

Name of Contract/Project Cost	a. Owner's Name b. Address c. Telephone Nos.	Nature of Work	Bidder's Role		a. Date Awarded b. Date Started c. Date of Completion	% of Accomplishment		Value of Outstanding Works / Undelivered Portion
			Description	%		Planned	Actual	
<u>Government</u>								
<u>Private</u>								
Note: This statement shall be supported with:						Total Cost		

- 1 Notice of Award (for government projects)**
- 2 Notice to Proceed (for government projects)**
- 3 Contract**

Submitted by : _____
(Printed Name & Signature)

Designation : _____

Date : _____

[Bidder's Letterhead]

Name of the Procuring Entity : BULACAN AGRICULTURAL STATE COLLEGE

Project: 2023-01-INFRA: Rehabilitation of BASC Internet Café

Location of the Project : San Ildefonso, Bulacan

Statement of Single Largest Completed Contracts (SLCC) in the last five (5) years

Business Name : _____ Business Address : _____

Name of Contract	a. Owner Name b. Address c. Telephone Nos.	Nature of Work	Contractor's Role		a. Amount at Award b. Amount at Completion c. Duration	a. Date Awarded b. Contract Effectivity c. Date Completed
			Description	%		
<u>Government</u>						
<u>Private</u>						

Attached herewith are the following documents: Contract Agreement, Notice of Award, Notice to Proceed, Official Receipt/Invoice, Certificate of Final Inspection, and Certificate of Acceptance, as evidences in support of the foregoing information.

Submitted by : _____
(Printed Name & Signature)

Designation : _____

Contract Agreement Form

THIS AGREEMENT made the ____ day of _____ 20____ between [*name of PROCURING ENTITY*] of the Philippines (hereinafter called “the Entity”) of the one part and [*name of Supplier*] of [*city and country of Supplier*] (hereinafter called “the Supplier”) of the other part:

WHEREAS the Entity invited Bids for certain goods and ancillary services, viz., [*brief description of goods and services*] and has accepted a Bid by the Supplier for the supply of those goods and services in the sum of [*contract price in words and figures*] (hereinafter called “the Contract Price”).

NOW THIS AGREEMENT WITNESSETH AS FOLLOWS:

1. In this Agreement words and expressions shall have the same meanings as are respectively assigned to them in the Conditions of Contract referred to.
2. The following documents shall be deemed to form and be read and construed as part of this Agreement, viz.:
 - (a) the Supplier’s Bid, including the Technical and Financial Proposals, and all other documents/statements submitted (*e.g.* bidder’s response to clarifications on the bid), including corrections to the bid resulting from the Procuring Entity’s bid evaluation;
 - (b) the Schedule of Requirements;
 - (c) the Technical Specifications;
 - (d) the General Conditions of Contract;
 - (e) the Special Conditions of Contract;
 - (f) the Performance Security; and
 - (g) the Entity’s Notice of Award.
3. In consideration of the payments to be made by the Entity to the Supplier as hereinafter mentioned, the Supplier hereby covenants with the Entity to provide the goods and services and to remedy defects therein in conformity in all respects with the provisions of the Contract
4. The Entity hereby covenants to pay the Supplier in consideration of the provision of the goods and services and the remedying of defects therein, the Contract Price or such other sum as may become payable under the provisions of the contract at the time and in the manner prescribed by the contract.

IN WITNESS whereof the parties hereto have caused this Agreement to be executed in accordance with the laws of the Republic of the Philippines on the day and year first above written.

Signed, sealed, delivered by _____ the _____ (for the Entity)

Signed, sealed, delivered by _____ the _____ (for the Supplier)

Omnibus Sworn Statement (Revised)

[shall be submitted with the Bid]

REPUBLIC OF THE PHILIPPINES)

CITY/MUNICIPALITY OF _____) S.S.

AFFIDAVIT

I, [Name of Affiant], of legal age, [Civil Status], [Nationality], and residing at [Address of Affiant], after having been duly sworn in accordance with law, do hereby depose and state that:

1. *[Select one, delete the other:]*

[If a sole proprietorship:] I am the sole proprietor or authorized representative of [Name of Bidder] with office address at [address of Bidder];

[If a partnership, corporation, cooperative, or joint venture:] I am the duly authorized and designated representative of [Name of Bidder] with office address at [address of Bidder];

2. *[Select one, delete the other:]*

[If a sole proprietorship:] As the owner and sole proprietor, or authorized representative of [Name of Bidder], I have full power and authority to do, execute and perform any and all acts necessary to participate, submit the bid, and to sign and execute the ensuing contract for [Name of the Project] of the [Name of the Procuring Entity], as shown in the attached duly notarized Special Power of Attorney;

[If a partnership, corporation, cooperative, or joint venture:] I am granted full power and authority to do, execute and perform any and all acts necessary to participate, submit the bid, and to sign and execute the ensuing contract for [Name of the Project] of the [Name of the Procuring Entity], as shown in the attached [state title of attached document showing proof of authorization (e.g., duly notarized Secretary's Certificate, Board/Partnership Resolution, or Special Power of Attorney, whichever is applicable)];

3. [Name of Bidder] is not "blacklisted" or barred from bidding by the Government of the Philippines or any of its agencies, offices, corporations, or Local Government Units, foreign government/foreign or international financing institution whose blacklisting rules have been recognized by the Government Procurement Policy Board, **by itself or by relation, membership, association, affiliation, or controlling interest with another blacklisted person or entity as defined and provided for in the Uniform Guidelines on Blacklisting;**

4. Each of the documents submitted in satisfaction of the bidding requirements is an authentic copy of the original, complete, and all statements and information provided therein are true and correct;

5. [Name of Bidder] is authorizing the Head of the Procuring Entity or its duly authorized representative(s) to verify all the documents submitted;

6. *[Select one, delete the rest:]*

[If a sole proprietorship:] The owner or sole proprietor is not related to the Head of the Procuring Entity, members of the Bids and Awards Committee (BAC), the Technical Working Group, and

the BAC Secretariat, the head of the Project Management Office or the end-user unit, and the project consultants by consanguinity or affinity up to the third civil degree;

[If a partnership or cooperative:] None of the officers and members of *[Name of Bidder]* is related to the Head of the Procuring Entity, members of the Bids and Awards Committee (BAC), the Technical Working Group, and the BAC Secretariat, the head of the Project Management Office or the end-user unit, and the project consultants by consanguinity or affinity up to the third civil degree;

[If a corporation or joint venture:] None of the officers, directors, and controlling stockholders of *[Name of Bidder]* is related to the Head of the Procuring Entity, members of the Bids and Awards Committee (BAC), the Technical Working Group, and the BAC Secretariat, the head of the Project Management Office or the end-user unit, and the project consultants by consanguinity or affinity up to the third civil degree;

7. *[Name of Bidder]* complies with existing labor laws and standards; and
8. *[Name of Bidder]* is aware of and has undertaken the responsibilities as a Bidder in compliance with the Philippine Bidding Documents, which includes:
 - a. Carefully examining all of the Bidding Documents;
 - b. Acknowledging all conditions, local or otherwise, affecting the implementation of the Contract;
 - c. Making an estimate of the facilities available and needed for the contract to be bid, if any; and
 - d. Inquiring or securing Supplemental/Bid Bulletin(s) issued for the *[Name of the Project]*.
9. *[Name of Bidder]* did not give or pay directly or indirectly, any commission, amount, fee, or any form of consideration, pecuniary or otherwise, to any person or official, personnel or representative of the government in relation to any procurement project or activity.
10. **In case advance payment was made or given, failure to perform or deliver any of the obligations and undertakings in the contract shall be sufficient grounds to constitute criminal liability for Swindling (Estafa) or the commission of fraud with unfaithfulness or abuse of confidence through misappropriating or converting any payment received by a person or entity under an obligation involving the duty to deliver certain goods or services, to the prejudice of the public and the government of the Philippines pursuant to Article 315 of Act No. 3815 s. 1930, as amended, or the Revised Penal Code.**

IN WITNESS WHEREOF, I have hereunto set my hand this ___ day of ___, 20__ at _____, Philippines.

[Insert NAME OF BIDDER OR ITS AUTHORIZED REPRESENTATIVE]

[Insert signatory's legal capacity]

Affiant

[Jurat]

[Format shall be based on the latest Rules on Notarial Practice]

Bid Securing Declaration Form

[shall be submitted with the Bid if bidder opts to provide this form of bid security]

REPUBLIC OF THE PHILIPPINES)

CITY OF _____) S.S.

BID SECURING DECLARATION

Project Identification No.: *[Insert number]*

To: *[Insert name and address of the Procuring Entity]*

I/We, the undersigned, declare that:

1. I/We understand that, according to your conditions, bids must be supported by a Bid Security, which may be in the form of a Bid Securing Declaration.
2. I/We accept that: (a) I/we will be automatically disqualified from bidding for any procurement contract with any procuring entity for a period of two (2) years upon receipt of your Blacklisting Order; and, (b) I/we will pay the applicable fine provided under Section 6 of the Guidelines on the Use of Bid Securing Declaration, within fifteen (15) days from receipt of the written demand by the procuring entity for the commission of acts resulting to the enforcement of the bid securing declaration under Sections 23.1(b), 34.2, 40.1 and 69.1, except 69.1(f), of the IRR of RA No. 9184; without prejudice to other legal action the government may undertake.
3. I/We understand that this Bid Securing Declaration shall cease to be valid on the following circumstances:
 - a. Upon expiration of the bid validity period, or any extension thereof pursuant to your request;
 - b. I am/we are declared ineligible or post-disqualified upon receipt of your notice to such effect, and (i) I/we failed to timely file a request for reconsideration or (ii) I/we filed a waiver to avail of said right; and
 - c. I am/we are declared the bidder with the Lowest Calculated Responsive Bid, and I/we have furnished the performance security and signed the Contract.

IN WITNESS WHEREOF, I/We have hereunto set my/our hand/s this ____ day of *[month]* *[year]* at *[place of execution]*.

*[[Insert NAME OF BIDDER OR ITS
AUTHORIZED REPRESENTATIVE]*

[Insert signatory's legal capacity]

Affiant

[Jurat] *[Format shall be based on the latest Rules on Notarial Practice]*

NET FINANCIAL CONTRACTING CAPACITY

		Year 20____
1	Total Assets	
2	Current Assets	
3	Total Liabilities	
4	Current Liabilities	
5	Net Worth (1-3)	
6	Net Working Capital (2-4)	

The Net Financial Contracting Capacity (NFCC) based on the above data is computed as follows:

NFCC = [(Current assets – current liabilities) (15)] minus value of all outstanding or uncompleted portions of the projects under ongoing contracts including awarded contracts yet to be started coinciding with the contract to be bid.

The values of the domestic bidder’s current assets and current liabilities shall be based on the latest Audited Financial Statements submitted to the BIR.

NFCC = PhP _____

Submitted by:

Name of Bidder

Signature of Authorized Representative over Printed Name

Date: _____

