



BULACAN AGRICULTURAL STATE COLLEGE

Construction of Solar Powered Four Storey 20 Classroom Academic Building (Phase 1)

FY 2022

Preface

These Philippine Bidding Documents (PBDs) for the procurement of Infrastructure Projects (hereinafter referred to also as the “Works”) through Competitive Bidding have been prepared by the Government of the Philippines for use by all branches, agencies, departments, bureaus, offices, or instrumentalities of the government, including government-owned and/or -controlled corporations, government financial institutions, state universities and colleges, local government units, and autonomous regional government. The procedures and practices presented in this document have been developed through broad experience, and are for mandatory use in projects that are financed in whole or in part by the Government of the Philippines or any foreign government/foreign or international financing institution in accordance with the provisions of the 2016 revised Implementing Rules and Regulations (IRR) of Republic Act (RA) No. 9184.

The PBDs are intended as a model for admeasurements (unit prices or unit rates in a bill of quantities) types of contract, which are the most common in Works contracting.

The Bidding Documents shall clearly and adequately define, among others: (i) the objectives, scope, and expected outputs and/or results of the proposed contract; (ii) the eligibility requirements of Bidders; (iii) the expected contract duration; and (iv) the obligations, duties, and/or functions of the winning Bidder.

Care should be taken to check the relevance of the provisions of the PBDs against the requirements of the specific Works to be procured. If duplication of a subject is inevitable in other sections of the document prepared by the Procuring Entity, care must be exercised to avoid contradictions between clauses dealing with the same matter.

Moreover, each section is prepared with notes intended only as information for the Procuring Entity or the person drafting the Bidding Documents. They shall not be included in the final documents. The following general directions should be observed when using the documents:

- a. All the documents listed in the Table of Contents are normally required for the procurement of Infrastructure Projects. However, they should be adapted as necessary to the circumstances of the particular Project.
- b. Specific details, such as the “*name of the Procuring Entity*” and “*address for bid submission*,” should be furnished in the Instructions to Bidders, Bid Data Sheet, and Special Conditions of Contract. The final documents should contain neither blank spaces nor options.
- c. This Preface and the footnotes or notes in italics included in the Invitation to Bid, BDS, General Conditions of Contract, Special Conditions of Contract, Specifications, Drawings, and Bill of Quantities are not part of the text of the final document, although they contain instructions that the Procuring Entity should strictly follow.
- d. The cover should be modified as required to identify the Bidding Documents as to the names of the Project, Contract, and Procuring Entity, in addition to date of issue.

- e. Modifications for specific Procurement Project details should be provided in the Special Conditions of Contract as amendments to the Conditions of Contract. For easy completion, whenever reference has to be made to specific clauses in the Bid Data Sheet or Special Conditions of Contract, these terms shall be printed in bold typeface on Sections I (Instructions to Bidders) and III (General Conditions of Contract), respectively.
- f. For guidelines on the use of Bidding Forms and the procurement of Foreign-Assisted Projects, these will be covered by a separate issuance of the Government Procurement Policy Board.

TABLE OF CONTENTS

Glossary of Terms, Abbreviations, and Acronyms	5
Section I. Invitation to Bid.....	8
Section II. Instructions to Bidders	11
1. Scope of Bid.....	12
2. Funding Information	12
3. Bidding Requirements.....	12
4. Corrupt, Fraudulent, Collusive, Coercive, and Obstructive Practices	12
5. Eligible Bidders.....	12
6. Origin of Associated Goods	13
7. Subcontracts	13
8. Pre-Bid Conference.....	13
9. Clarification and Amendment of Bidding Documents.....	13
10. Documents Comprising the Bid: Eligibility and Technical Components	13
11. Documents Comprising the Bid: Financial Component	14
12. Alternative Bids	14
13. Bid Prices	14
14. Bid and Payment Currencies.....	15
15. Bid Security.....	15
16. Sealing and Marking of Bids.....	15
17. Deadline for Submission of Bids	15
18. Opening and Preliminary Examination of Bids	16
19. Detailed Evaluation and Comparison of Bids	16
20. Post Qualification.....	16
21. Signing of the Contract	16
Section III. Bid Data Sheet	17
Section IV. General Conditions of Contract.....	20
1. Scope of Contract.....	21
2. Sectional Completion of Works	21
3. Possession of Site	21
4. The Contractor's Obligations.....	21
5. Performance Security	22
6. Site Investigation Reports	22

7.	Warranty.....	22
8.	Liability of the Contractor.....	22
9.	Termination for Other Causes.....	22
10.	Dayworks	23
11.	Program of Work.....	23
12.	Instructions, Inspections and Audits	23
13.	Advance Payment.....	23
14.	Progress Payments	23
15.	Operating and Maintenance Manuals.....	24
Section V. Special Conditions of Contract.....		25
Section VI. Specifications		27
Section VII. Drawings.....		Error! Bookmark not defined.
Section VIII. Bill of Quantities		Error! Bookmark not defined.
Section IX. Checklist of Technical and Financial Documents		74

Glossary of Terms, Abbreviations, and Acronyms

ABC – Approved Budget for the Contract.

ARCC – Allowable Range of Contract Cost.

BAC – Bids and Awards Committee.

Bid – A signed offer or proposal to undertake a contract submitted by a bidder in response to and in consonance with the requirements of the bidding documents. Also referred to as *Proposal* and *Tender*. (2016 revised IRR, Section 5[c])

Bidder – Refers to a contractor, manufacturer, supplier, distributor and/or consultant who submits a bid in response to the requirements of the Bidding Documents. (2016 revised IRR, Section 5[d])

Bidding Documents – The documents issued by the Procuring Entity as the bases for bids, furnishing all information necessary for a prospective bidder to prepare a bid for the Goods, Infrastructure Projects, and/or Consulting Services required by the Procuring Entity. (2016 revised IRR, Section 5[e])

BIR – Bureau of Internal Revenue.

BSP – Bangko Sentral ng Pilipinas.

CDA – Cooperative Development Authority.

Consulting Services – Refer to services for Infrastructure Projects and other types of projects or activities of the GOP requiring adequate external technical and professional expertise that are beyond the capability and/or capacity of the GOP to undertake such as, but not limited to: (i) advisory and review services; (ii) pre-investment or feasibility studies; (iii) design; (iv) construction supervision; (v) management and related services; and (vi) other technical services or special studies. (2016 revised IRR, Section 5[i])

Contract – Refers to the agreement entered into between the Procuring Entity and the Supplier or Manufacturer or Distributor or Service Provider for procurement of Goods and Services; Contractor for Procurement of Infrastructure Projects; or Consultant or Consulting Firm for Procurement of Consulting Services; as the case may be, as recorded in the Contract Form signed by the parties, including all attachments and appendices thereto and all documents incorporated by reference therein.

Contractor – is a natural or juridical entity whose proposal was accepted by the Procuring Entity and to whom the Contract to execute the Work was awarded. Contractor as used in these Bidding Documents may likewise refer to a supplier, distributor, manufacturer, or consultant.

CPI – Consumer Price Index.

DOLE – Department of Labor and Employment.

DTI – Department of Trade and Industry.

Foreign-funded Procurement or Foreign-Assisted Project – Refers to procurement whose funding source is from a foreign government, foreign or international financing institution as specified in the Treaty or International or Executive Agreement. (2016 revised IRR, Section 5[b]).

GFI – Government Financial Institution.

GOCC – Government-owned and/or –controlled corporation.

Goods – Refer to all items, supplies, materials and general support services, except Consulting Services and Infrastructure Projects, which may be needed in the transaction of public businesses or in the pursuit of any government undertaking, project or activity, whether in the nature of equipment, furniture, stationery, materials for construction, or personal property of any kind, including non-personal or contractual services such as the repair and maintenance of equipment and furniture, as well as trucking, hauling, janitorial, security, and related or analogous services, as well as procurement of materials and supplies provided by the Procuring Entity for such services. The term “related” or “analogous services” shall include, but is not limited to, lease or purchase of office space, media advertisements, health maintenance services, and other services essential to the operation of the Procuring Entity. (2016 revised IRR, Section 5[r])

GOP – Government of the Philippines.

Infrastructure Projects – Include the construction, improvement, rehabilitation, demolition, repair, restoration or maintenance of roads and bridges, railways, airports, seaports, communication facilities, civil works components of information technology projects, irrigation, flood control and drainage, water supply, sanitation, sewerage and solid waste management systems, shore protection, energy/power and electrification facilities, national buildings, school buildings, hospital buildings, and other related construction projects of the government. Also referred to as *civil works or works*. (2016 revised IRR, Section 5[u])

LGUs – Local Government Units.

NFCC – Net Financial Contracting Capacity.

NGA – National Government Agency.

PCAB – Philippine Contractors Accreditation Board.

PhilGEPS - Philippine Government Electronic Procurement System.

Procurement Project – refers to a specific or identified procurement covering goods, infrastructure project or consulting services. A Procurement Project shall be described, detailed, and scheduled in the Project Procurement Management Plan prepared by the agency which shall be consolidated in the procuring entity's Annual Procurement Plan. (GPPB Circular No. 06-2019 dated 17 July 2019)

PSA – Philippine Statistics Authority.

SEC – Securities and Exchange Commission.

SLCC – Single Largest Completed Contract.

UN – United Nations.

Section I. Invitation to Bid

Notes on the Invitation to Bid

The Invitation to Bid (IB) provides information that enables potential Bidders to decide whether to participate in the procurement at hand. The IB shall be posted in accordance with Section 21.2 of the 2016 revised IRR of RA No. 9184.

Apart from the essential items listed in the Bidding Documents, the IB should also indicate the following:

- a. The date of availability of the Bidding Documents, which shall be from the time the IB is first advertised/posted until the deadline for the submission and receipt of bids;
- b. The place where the Bidding Documents may be acquired or the website where it may be downloaded;
- c. The deadline for the submission and receipt of bids; and
- d. Any important bid evaluation criteria.

The IB should be incorporated into the Bidding Documents. The information contained in the IB must conform to the Bidding Documents and in particular to the relevant information in the Bid Data Sheet.



Bulacan Agricultural State College
San Ildefonso, Bulacan, 3010

INVITATION TO BID

Invitation to Bid for Construction of Solar Powered Four Storey 20 Classroom Academic Building (Phase 1)

1. The *Bulacan Agricultural State College*, through the *General Appropriations Act (GAA) under the Capital Outlay for the FY 2023* intends to apply the sum of *Twenty-Five Million pesos (Php 25,000,000.00)* being the Approved Budget for the Contract (ABC) to payments under the contract for **2022-06-INFRA: Construction of Solar Powered Four Storey 20 Classroom Academic Building (Phase 1)**. Bids received in excess of the ABC shall be automatically rejected at bid opening.
2. The *Bulacan Agricultural State College* now invites bids for the above Procurement Project. Completion of the Works is required *on or before the two hundred seventy (270) calendar days*. Bidders should have completed a contract similar to the Project. The description of an eligible bidder is contained in the Bidding Documents, particularly, in Section II (Instructions to Bidders).
3. Bidding will be conducted through open competitive bidding procedures using non-discretionary “*pass/fail*” criterion as specified in the 2016 revised Implementing Rules and Regulations (IRR) of Republic Act (RA) No. 9184.
4. Interested bidders may obtain further information *Bulacan Agricultural State College* and inspect the Bidding Documents at the address given below from *[8:30 am to 4:30 pm]*.
5. A complete set of Bidding Documents may be acquired by interested bidders on *October 12, 2022 to November 4, 2022* from given address and website/s below *and upon payment of the applicable fee for the Bidding Documents, pursuant to the latest Guidelines issued by the GPPB, in the amount of Twenty-Five Thousand Pesos (Php 25,000.00)*. Procuring Entity shall allow the bidder to present its proof of payment for the fees *by presenting the receipt upon submission of their bid documents*.
6. The *Bulacan Agricultural State College* will hold a Pre-Bid Conference¹ on ***October 19, 2022, 09:00 AM via Zoom Platform (Meeting ID: 871 8163 0219; Passcode: 110564)*** which shall be open to prospective bidders.

¹ May be deleted in case the ABC is less than One Million Pesos (PhP1,000,000) where the Procuring Entity may not hold a Pre-Bid Conference.

7. Bids must be duly received by the BAC Secretariat through manual submission at the office address as indicated below on or before **08:30 AM of November 4, 2022**. Late bids shall not be accepted.
8. All bids must be accompanied by a bid security in any of the acceptable forms and in the amount stated in **ITB** Clause 16.
9. Bid opening shall be on **November 4, 2022, 9:00AM** at the the **Conference Room, Ground Floor, Farmers Training Center, BASC, San Ildefonso, Bulacan**. Bids will be opened in the presence of the bidders' representatives who choose to attend the activity.
10. *Observers will be invited to attend and witness the bid proceedings.*
11. The *Bulacan Agricultural State College* reserves the right to reject any and all bids, declare a failure of bidding, or not award the contract at any time prior to contract award in accordance with Sections 35.6 and 41 of the 2016 revised IRR of RA No. 9184, without thereby incurring any liability to the affected bidder or bidders.
12. For further information, please refer to:

CORAZON R. ABABA

BAC Secretariat

BULACAN AGRICULTURAL STATE COLLEGE

Brgy. Pinaod, San Ildefonso, Bulacan

(044) 697-1240 and 0955-367-2231

corazon.ababa@basc.edu.ph

www.basc.edu.ph

13. You may visit the following websites:

For downloading of Bidding Documents:

corazon.ababa@basc.edu.ph

www.basc.edu.ph

October 12, 2022


RONALD REAGAN T. ALONZO, Ph.D.

BAC Chairperson

Section II. Instructions to Bidders

Notes on the Instructions to Bidders

This Section on the Instruction to Bidders (ITB) provides the information necessary for bidders to prepare responsive bids, in accordance with the requirements of the Procuring Entity. It also provides information on bid submission, eligibility check, opening and evaluation of bids, post-qualification, and on the award of contract.

1. Scope of Bid

The Procuring Entity, *Bulacan Agricultural State College*, invites Bids for the **Construction of Solar Powered Four Storey 20 Classroom Academic Building (Phase 1)**, with Project Identification Number *2022-06-INFRA*.

The Procurement Project (referred to herein as “Project”) is for the construction of Works, as described in Section VI (Specifications).

2. Funding Information

2.1. The GOP through the source of funding as indicated below for *GAA FY 2023* in the amount of *Php25,000,000.00*.

2.2. The source of funding is:
a. NGA, the National Expenditure Program.

3. Bidding Requirements

The Bidding for the Project shall be governed by all the provisions of RA No. 9184 and its 2016 revised IRR, including its Generic Procurement Manual and associated policies, rules and regulations as the primary source thereof, while the herein clauses shall serve as the secondary source thereof.

Any amendments made to the IRR and other GPPB issuances shall be applicable only to the ongoing posting, advertisement, or invitation to bid by the BAC through the issuance of a supplemental or bid bulletin.

The Bidder, by the act of submitting its Bid, shall be deemed to have inspected the site, determined the general characteristics of the contracted Works and the conditions for this Project, such as the location and the nature of the work; (b) climatic conditions; (c) transportation facilities; (c) nature and condition of the terrain, geological conditions at the site communication facilities, requirements, location and availability of construction aggregates and other materials, labor, water, electric power and access roads; and (d) other factors that may affect the cost, duration and execution or implementation of the contract, project, or work and examine all instructions, forms, terms, and project requirements in the Bidding Documents.

4. Corrupt, Fraudulent, Collusive, Coercive, and Obstructive Practices

The Procuring Entity, as well as the Bidders and Contractors, shall observe the highest standard of ethics during the procurement and execution of the contract. They or through an agent shall not engage in corrupt, fraudulent, collusive, coercive, and obstructive practices defined under Annex “I” of the 2016 revised IRR of RA No. 9184 or other integrity violations in competing for the Project.

5. Eligible Bidders

- 5.1. Only Bids of Bidders found to be legally, technically, and financially capable will be evaluated.
- 5.2. The Bidder must have an experience of having completed a Single Largest Completed Contract (SLCC) that is similar to this Project, equivalent to at least fifty percent (50%) of the ABC adjusted, if necessary, by the Bidder to current prices using the PSA's CPI, except under conditions provided for in Section 23.4.2.4 of the 2016 revised IRR of RA No. 9184.

A contract is considered to be "similar" to the contract to be bid if it has the major categories of work stated in the **BDS**.
- 5.3. For Foreign-funded Procurement, the Procuring Entity and the foreign government/foreign or international financing institution may agree on another track record requirement, as specified in the Bidding Document prepared for this purpose.
- 5.4. The Bidders shall comply with the eligibility criteria under Section 23.4.2 of the 2016 IRR of RA No. 9184.

6. Origin of Associated Goods

There is no restriction on the origin of Goods other than those prohibited by a decision of the UN Security Council taken under Chapter VII of the Charter of the UN.

7. Subcontracts

- 7.1. The Procuring Entity has prescribed that:
 - a. Subcontracting is not allowed.

8. Pre-Bid Conference

The Procuring Entity will hold a pre-bid conference for this Project on the specified date and time via online platform as indicated in paragraph 6 of the **IB**.

9. Clarification and Amendment of Bidding Documents

Prospective bidders may request for clarification on and/or interpretation of any part of the Bidding Documents. Such requests must be in writing and received by the Procuring Entity, either at its given address or through electronic mail indicated in the **IB**, at least ten (10) calendar days before the deadline set for the submission and receipt of Bids.

10. Documents Comprising the Bid: Eligibility and Technical Components

- 10.1. The first envelope shall contain the eligibility and technical documents of the Bid as specified in **Section IX. Checklist of Technical and Financial Documents**.

- 10.2. If the eligibility requirements or statements, the bids, and all other documents for submission to the BAC are in foreign language other than English, it must be accompanied by a translation in English, which shall be authenticated by the appropriate Philippine foreign service establishment, post, or the equivalent office having jurisdiction over the foreign bidder's affairs in the Philippines. For Contracting Parties to the Apostille Convention, only the translated documents shall be authenticated through an apostille pursuant to GPPB Resolution No. 13-2019 dated 23 May 2019. The English translation shall govern, for purposes of interpretation of the bid.
- 10.3. A valid PCAB License is required, and in case of joint ventures, a valid special PCAB License, and registration for the type and cost of the contract for this Project. Any additional type of Contractor license or permit shall be indicated in the **BDS**.
- 10.4. A List of Contractor's key personnel (e.g., Project Manager, Project Engineers, Materials Engineers, and Foremen) assigned to the contract to be bid, with their complete qualification and experience data shall be provided. These key personnel must meet the required minimum years of experience set in the **BDS**.
- 10.5. A List of Contractor's major equipment units, which are owned, leased, and/or under purchase agreements, supported by proof of ownership, certification of availability of equipment from the equipment lessor/vendor for the duration of the project, as the case may be, must meet the minimum requirements for the contract set in the **BDS**.

11. Documents Comprising the Bid: Financial Component

- 11.1. The second bid envelope shall contain the financial documents for the Bid as specified in **Section IX. Checklist of Technical and Financial Documents**.
- 11.2. Any bid exceeding the ABC indicated in paragraph 1 of the **IB** shall not be accepted.
- 11.3. For Foreign-funded procurement, a ceiling may be applied to bid prices provided the conditions are met under Section 31.2 of the 2016 revised IRR of RA No. 9184.

12. Alternative Bids

Bidders shall submit offers that comply with the requirements of the Bidding Documents, including the basic technical design as indicated in the drawings and specifications. Unless there is a value engineering clause in the **BDS**, alternative Bids shall not be accepted.

13. Bid Prices

All bid prices for the given scope of work in the Project as awarded shall be considered as fixed prices, and therefore not subject to price escalation during contract implementation, except under extraordinary circumstances as determined by the NEDA and approved by the GPPB pursuant to the revised Guidelines for Contract Price Escalation guidelines.

14. Bid and Payment Currencies

14.1. Bid prices may be quoted in the local currency or tradeable currency accepted by the BSP at the discretion of the Bidder. However, for purposes of bid evaluation, Bids denominated in foreign currencies shall be converted to Philippine currency based on the exchange rate as published in the BSP reference rate bulletin on the day of the bid opening.

14.2. *Payment of the contract price shall be made in:*
a. Philippine Pesos.

15. Bid Security

15.1. The Bidder shall submit a Bid Securing Declaration or any form of Bid Security in the amount indicated in the **BDS**, which shall be not less than the percentage of the ABC in accordance with the schedule in the **BDS**.

15.2. The Bid and bid security shall be valid until *120 days from the opening of bids*. Any bid not accompanied by an acceptable bid security shall be rejected by the Procuring Entity as non-responsive.

16. Sealing and Marking of Bids

Each bidder shall submit one copy of the original of the first and second components of its Bid and plus two (2) copies of each kind, labeled as copy 1 and copy 2.

Each Bidder shall submit one copy of the first and second components of its Bid.

The Procuring Entity may request additional hard copies and/or electronic copies of the Bid. However, failure of the Bidders to comply with the said request shall not be a ground for disqualification.

If the Procuring Entity allows the submission of bids through online submission to the given website or any other electronic means, the Bidder shall submit an electronic copy of its Bid, which must be digitally signed. An electronic copy that cannot be opened or is corrupted shall be considered non-responsive and, thus, automatically disqualified.

17. Deadline for Submission of Bids

The Bidders shall submit on the specified date and time and either at its physical address as indicated in paragraph 7 of the **IB**.

18. Opening and Preliminary Examination of Bids

- 18.1. The BAC shall open the Bids in public at the time, on the date, and at the place specified in paragraph 9 of the **IB**. The Bidders' representatives who are present shall sign a register evidencing their attendance. In case videoconferencing, webcasting or other similar technologies will be used, attendance of participants shall likewise be recorded by the BAC Secretariat.

In case the Bids cannot be opened as scheduled due to justifiable reasons, the rescheduling requirements under Section 29 of the 2016 revised IRR of RA No. 9184 shall prevail.

- 18.2. The preliminary examination of Bids shall be governed by Section 30 of the 2016 revised IRR of RA No. 9184.

19. Detailed Evaluation and Comparison of Bids

- 19.1. The Procuring Entity's BAC shall immediately conduct a detailed evaluation of all Bids rated "*passed*" using non-discretionary pass/fail criteria. The BAC shall consider the conditions in the evaluation of Bids under Section 32.2 of 2016 revised IRR of RA No. 9184.

- 19.2. If the Project allows partial bids, all Bids and combinations of Bids as indicated in the **BDS** shall be received by the same deadline and opened and evaluated simultaneously so as to determine the Bid or combination of Bids offering the lowest calculated cost to the Procuring Entity. Bid Security as required by **ITB** Clause 16 shall be submitted for each contract (lot) separately.

- 19.3. In all cases, the NFCC computation pursuant to Section 23.4.2.6 of the 2016 revised IRR of RA No. 9184 must be sufficient for the total of the ABCs for all the lots participated in by the prospective Bidder.

20. Post Qualification

Within a non-extendible period of five (5) calendar days from receipt by the Bidder of the notice from the BAC that it submitted the Lowest Calculated Bid, the Bidder shall submit its latest income and business tax returns filed and paid through the BIR Electronic Filing and Payment System (eFPS), and other appropriate licenses and permits required by law and stated in the **BDS**.

21. Signing of the Contract

The documents required in Section 37.2 of the 2016 revised IRR of RA No. 9184 shall form part of the Contract. Additional Contract documents are indicated in the **BDS**.

Section III. Bid Data Sheet

Notes on the Bid Data Sheet (BDS)

The Bid Data Sheet (BDS) consists of provisions that supplement, amend, or specify in detail, information, or requirements included in the ITB found in Section II, which are specific to each procurement.

This Section is intended to assist the Procuring Entity in providing the specific information in relation to corresponding clauses in the ITB and has to be prepared for each specific procurement.

The Procuring Entity should specify in the BDS information and requirements specific to the circumstances of the Procuring Entity, the processing of the procurement, and the bid evaluation criteria that will apply to the Bids. In preparing the BDS, the following aspects should be checked:

- a. Information that specifies and complements provisions of the ITB must be incorporated.
- b. Amendments and/or supplements, if any, to provisions of the ITB as necessitated by the circumstances of the specific procurement, must also be incorporated.

Bid Data Sheet

ITB Clause																						
5.2	For this purpose, contracts similar to the Project refer to contracts which have the same major categories of work, which shall be: <i>[construction, renovation, rehabilitation, repair of automated greenhouses].</i>																					
7.1	<i>Subcontracting is not allowed.</i>																					
10.3	<i>Appropriate PCAB License commensurate to the Project.</i>																					
10.4	The key personnel must meet the required minimum years of experience set below:																					
	<table><tr><td><u>Key Personnel</u></td><td><u>General Experience</u></td><td><u>Relevant Experience</u></td></tr><tr><td>Civil Engineer/ Architect</td><td>at least 5 years</td><td>at least 5 years</td></tr><tr><td>Materials Engineer</td><td>at least 5 years</td><td>at least 5 years</td></tr><tr><td>Foreman</td><td>at least 5 years</td><td>at least 5 years</td></tr><tr><td>Safety Officer</td><td>at least 5 years</td><td>at least 5 years</td></tr><tr><td>Skilled Laborer</td><td>at least 3 years</td><td>at least 3 years</td></tr><tr><td>Laborer</td><td>-</td><td>-</td></tr></table>	<u>Key Personnel</u>	<u>General Experience</u>	<u>Relevant Experience</u>	Civil Engineer/ Architect	at least 5 years	at least 5 years	Materials Engineer	at least 5 years	at least 5 years	Foreman	at least 5 years	at least 5 years	Safety Officer	at least 5 years	at least 5 years	Skilled Laborer	at least 3 years	at least 3 years	Laborer	-	-
	<u>Key Personnel</u>	<u>General Experience</u>	<u>Relevant Experience</u>																			
	Civil Engineer/ Architect	at least 5 years	at least 5 years																			
	Materials Engineer	at least 5 years	at least 5 years																			
	Foreman	at least 5 years	at least 5 years																			
	Safety Officer	at least 5 years	at least 5 years																			
Skilled Laborer	at least 3 years	at least 3 years																				
Laborer	-	-																				
10.5	The minimum major equipment requirements are the following:																					
	<table><tr><td><u>Equipment</u></td><td><u>Capacity</u></td><td><u>Number of Units</u></td></tr><tr><td>Mini dump truck or Elf truck</td><td></td><td>1</td></tr><tr><td>Concrete Mixer</td><td>one bagger</td><td>2</td></tr><tr><td>Cut Off</td><td>-</td><td>2</td></tr><tr><td>Bar Bender</td><td>-</td><td>2</td></tr><tr><td>Concrete Vibrator</td><td>-</td><td>2</td></tr><tr><td>Welding Machine</td><td>heavy duty</td><td>2</td></tr></table>	<u>Equipment</u>	<u>Capacity</u>	<u>Number of Units</u>	Mini dump truck or Elf truck		1	Concrete Mixer	one bagger	2	Cut Off	-	2	Bar Bender	-	2	Concrete Vibrator	-	2	Welding Machine	heavy duty	2
	<u>Equipment</u>	<u>Capacity</u>	<u>Number of Units</u>																			
	Mini dump truck or Elf truck		1																			
	Concrete Mixer	one bagger	2																			
	Cut Off	-	2																			
	Bar Bender	-	2																			
Concrete Vibrator	-	2																				
Welding Machine	heavy duty	2																				
12	<i>Alternative Bids are not allowed.</i>																					
15.1	The bid security shall be in the form of a Bid Securing Declaration or any of the following forms and amounts: a. The amount of not less than Php500,000.00 <i>[(2%) of ABC]</i> , if bid security is in cash, cashier’s/manager’s check, bank draft/guarantee or irrevocable letter of credit; b. The amount of not less than Php1,250,000.00 <i>[(5%) of ABC]</i> if bid security is in Surety Bond.																					

19.2	Partial bids are not allowed
20	<i>[Building permit, Occupancy permit, Locational Clearance, Environmental Compliance Certificate, Certification that the project site is not within a geohazard zone.etc.]</i>
21	Additional contract documents relevant to the Project that may be required by existing laws and/or the Procuring Entity, such as construction schedule and S-curve, manpower schedule, construction methods, equipment utilization schedule, construction safety and health program approved by the DOLE, and (PERT/CPM) or other acceptable tools of project scheduling.

Section IV. General Conditions of Contract

Notes on the General Conditions of Contract

The General Conditions of Contract (GCC) in this Section, read in conjunction with the Special Conditions of Contract in Section V and other documents listed therein, should be a complete document expressing all the rights and obligations of the parties.

Matters governing performance of the Contractor, payments under the contract, or matters affecting the risks, rights, and obligations of the parties under the contract are included in the GCC and Special Conditions of Contract.

Any complementary information, which may be needed, shall be introduced only through the Special Conditions of Contract.

1. Scope of Contract

This Contract shall include all such items, although not specifically mentioned, that can be reasonably inferred as being required for its completion as if such items were expressly mentioned herein. All the provisions of RA No. 9184 and its 2016 revised IRR, including the Generic Procurement Manual, and associated issuances, constitute the primary source for the terms and conditions of the Contract, and thus, applicable in contract implementation. Herein clauses shall serve as the secondary source for the terms and conditions of the Contract.

This is without prejudice to Sections 74.1 and 74.2 of the 2016 revised IRR of RA No. 9184 allowing the GPPB to amend the IRR, which shall be applied to all procurement activities, the advertisement, posting, or invitation of which were issued after the effectivity of the said amendment.

2. Sectional Completion of Works

If sectional completion is specified in the **Special Conditions of Contract (SCC)**, references in the Conditions of Contract to the Works, the Completion Date, and the Intended Completion Date shall apply to any Section of the Works (other than references to the Completion Date and Intended Completion Date for the whole of the Works).

3. Possession of Site

4.1. The Procuring Entity shall give possession of all or parts of the Site to the Contractor based on the schedule of delivery indicated in the **SCC**, which corresponds to the execution of the Works. If the Contractor suffers delay or incurs cost from failure on the part of the Procuring Entity to give possession in accordance with the terms of this clause, the Procuring Entity's Representative shall give the Contractor a Contract Time Extension and certify such sum as fair to cover the cost incurred, which sum shall be paid by Procuring Entity.

4.2. If possession of a portion is not given by the above date, the Procuring Entity will be deemed to have delayed the start of the relevant activities. The resulting adjustments in contract time to address such delay may be addressed through contract extension provided under Annex "E" of the 2016 revised IRR of RA No. 9184.

4. The Contractor's Obligations

The Contractor shall employ the key personnel named in the Schedule of Key Personnel indicating their designation, in accordance with **ITB** Clause 10.3 and specified in the **BDS**, to carry out the supervision of the Works.

The Procuring Entity will approve any proposed replacement of key personnel only if their relevant qualifications and abilities are equal to or better than those of the personnel listed in the Schedule.

5. Performance Security

- 5.1. Within ten (10) calendar days from receipt of the Notice of Award from the Procuring Entity but in no case later than the signing of the contract by both parties, the successful Bidder shall furnish the performance security in any of the forms prescribed in Section 39 of the 2016 revised IRR.
- 5.2. The Contractor, by entering into the Contract with the Procuring Entity, acknowledges the right of the Procuring Entity to institute action pursuant to RA No. 3688 against any subcontractor be they an individual, firm, partnership, corporation, or association supplying the Contractor with labor, materials and/or equipment for the performance of this Contract.

6. Site Investigation Reports

The Contractor, in preparing the Bid, shall rely on any Site Investigation Reports referred to in the **SCC** supplemented by any information obtained by the Contractor.

7. Warranty

- 7.1. In case the Contractor fails to undertake the repair works under Section 62.2.2 of the 2016 revised IRR, the Procuring Entity shall forfeit its performance security, subject its property(ies) to attachment or garnishment proceedings, and perpetually disqualify it from participating in any public bidding. All payables of the GOP in his favor shall be offset to recover the costs.
- 7.2. The warranty against Structural Defects/Failures, except that occasioned-on force majeure, shall cover the period from the date of issuance of the Certificate of Final Acceptance by the Procuring Entity. Specific duration of the warranty is found in the **SCC**.

8. Liability of the Contractor

Subject to additional provisions, if any, set forth in the **SCC**, the Contractor's liability under this Contract shall be as provided by the laws of the Republic of the Philippines.

If the Contractor is a joint venture, all partners to the joint venture shall be jointly and severally liable to the Procuring Entity.

9. Termination for Other Causes

Contract termination shall be initiated in case it is determined *prima facie* by the Procuring Entity that the Contractor has engaged, before, or during the implementation of the contract, in unlawful deeds and behaviors relative to contract acquisition and implementation, such as, but not limited to corrupt, fraudulent, collusive, coercive, and obstructive practices as stated in **ITB** Clause 4.

10. Dayworks

Subject to the guidelines on Variation Order in Annex “E” of the 2016 revised IRR of RA No. 9184, and if applicable as indicated in the **SCC**, the Dayworks rates in the Contractor’s Bid shall be used for small additional amounts of work only when the Procuring Entity’s Representative has given written instructions in advance for additional work to be paid for in that way.

11. Program of Work

11.1. The Contractor shall submit to the Procuring Entity’s Representative for approval the said Program of Work showing the general methods, arrangements, order, and timing for all the activities in the Works. The submissions of the Program of Work are indicated in the **SCC**.

11.2. The Contractor shall submit to the Procuring Entity’s Representative for approval an updated Program of Work at intervals no longer than the period stated in the **SCC**. If the Contractor does not submit an updated Program of Work within this period, the Procuring Entity’s Representative may withhold the amount stated in the **SCC** from the next payment certificate and continue to withhold this amount until the next payment after the date on which the overdue Program of Work has been submitted.

12. Instructions, Inspections and Audits

The Contractor shall permit the GOP or the Procuring Entity to inspect the Contractor’s accounts and records relating to the performance of the Contractor and to have them audited by auditors of the GOP or the Procuring Entity, as may be required.

13. Advance Payment

The Procuring Entity shall, upon a written request of the Contractor which shall be submitted as a Contract document, make an advance payment to the Contractor in an amount not exceeding fifteen percent (15%) of the total contract price, to be made in lump sum, or at the most two installments according to a schedule specified in the **SCC**, subject to the requirements in Annex “E” of the 2016 revised IRR of RA No. 9184.

14. Progress Payments

The Contractor may submit a request for payment for Work accomplished. Such requests for payment shall be verified and certified by the Procuring Entity’s Representative/Project Engineer. Except as otherwise stipulated in the **SCC**, materials and equipment delivered on the site but not completely put in place shall not be included for payment.

15. Operating and Maintenance Manuals

- 15.1. If required, the Contractor will provide “as built” Drawings and/or operating and maintenance manuals as specified in the **SCC**.
- 15.2. If the Contractor does not provide the Drawings and/or manuals by the dates stated above, or they do not receive the Procuring Entity’s Representative’s approval, the Procuring Entity’s Representative may withhold the amount stated in the **SCC** from payments due to the Contractor.

Section V. Special Conditions of Contract

Notes on the Special Conditions of Contract

Similar to the BDS, the clauses in this Section are intended to assist the Procuring Entity in providing contract-specific information in relation to corresponding clauses in the GCC found in Section IV.

The Special Conditions of Contract (SCC) complement the GCC, specifying contractual requirements linked to the special circumstances of the Procuring Entity, the Procuring Entity's country, the sector, and the Works procured. In preparing this Section, the following aspects should be checked:

- a. Information that complements provisions of the GCC must be incorporated.
- b. Amendments and/or supplements to provisions of the GCC as necessitated by the circumstances of the specific purchase, must also be incorporated.

However, no special condition which defeats or negates the general intent and purpose of the provisions of the GCC should be incorporated herein.

Special Conditions of Contract

GCC Clause	
2	<i>The intended completion date of Construction of Solar Powered 20 Classroom Academic Building (Phase 1) is Two Hundred Seventy (270) calendar days from the date of the receipt of Notice to Proceed</i>
4.1	<i>The schedule of delivery of the possession of the site to the contractor is upon the receipt of the Notice to Proceed.</i>
6	The site investigation reports are: <i>None</i>
7.2	<i>In case of permanent structures, such as buildings of types 4 and 5 as classified under the National Building Code of the Philippines and other structures made of steel, iron, or concrete which comply with relevant structural codes (e.g., DPWH Standard Specifications), such as, but not limited to, steel/concrete bridges, flyovers, aircraft movement areas, ports, dams, tunnels, filtration and treatment plants, sewerage systems, power plants, transmission and communication towers, railway system, and other similar permanent structures:] Fifteen (15) years.</i>
10	a. Dayworks are applicable at the rate shown in the Contractor's original Bid.
11.1	The Contractor shall submit the Program of Work to the Procuring Entity's Representative within <i>[7 calendar]</i> days of delivery of the Notice of Award.
11.2	The amount to be withheld for late submission of an updated Program of Work is 1% of the progress billing.
13	<i>The amount of the advance payment is fifteen percent (15%) of the contract price to be paid upon written request of the contractor reconciling on the date of the Notice to Proceed and upon submission of an irrevocable standby letter of credit of equivalent value from a commercial bank, and bank guarantee or a surety bond callable upon demand, issued by a surety or insurance company duly licensed by the insurance Commission.</i>
14	Materials and equipment delivered on the site but not completely put in place shall not be included for payment.
15.1	The date by which "as built" drawings are required is fifteen (15) calendar days from completion of project.
15.2	The amount to be withheld for failing to produce "as built" drawings and/or operating and maintenance manuals by the date required is 0.1% of the final contract amount <i>[amount in local currency]</i> .

Section VI. Specifications

Notes on Specifications

A set of precise and clear specifications is a prerequisite for Bidders to respond realistically and competitively to the requirements of the Procuring Entity without qualifying or conditioning their Bids. In the context of international competitive bidding, the specifications must be drafted to permit the widest possible competition and, at the same time, present a clear statement of the required standards of workmanship, materials, and performance of the goods and services to be procured. Only if this is done will the objectives of economy, efficiency, and fairness in procurement be realized, responsiveness of Bids be ensured, and the subsequent task of bid evaluation facilitated. The specifications should require that all goods and materials to be incorporated in the Works be new, unused, of the most recent or current models, and incorporate all recent improvements in design and materials unless provided otherwise in the Contract.

Samples of specifications from previous similar projects are useful in this respect. The use of metric units is mandatory. Most specifications are normally written specially by the Procuring Entity or its representative to suit the Works at hand. There is no standard set of Specifications for universal application in all sectors in all regions, but there are established principles and practices, which are reflected in these PBDs.

There are considerable advantages in standardizing General Specifications for repetitive Works in recognized public sectors, such as highways, ports, railways, urban housing, irrigation, and water supply, in the same country or region where similar conditions prevail. The General Specifications should cover all classes of workmanship, materials, and equipment commonly involved in construction, although not necessarily to be used in a particular Works Contract. Deletions or addenda should then adapt the General Specifications to the particular Works.

Care must be taken in drafting specifications to ensure that they are not restrictive. In the specification of standards for goods, materials, and workmanship, recognized international standards should be used as much as possible. Where other particular standards are used, whether national standards or other standards, the specifications should state that goods, materials, and workmanship that meet other authoritative standards, and which ensure substantially equal or higher quality than the standards mentioned, will also be acceptable. The following clause may be inserted in the SCC.

Sample Clause: Equivalency of Standards and Codes

Wherever reference is made in the Contract to specific standards and codes to be met by the goods and materials to be furnished, and work performed or tested, the provisions of the latest current edition or revision of the relevant standards and codes in effect shall apply, unless otherwise expressly stated in the Contract. Where such standards and codes are national, or relate to a particular country or region, other authoritative standards that

ensure a substantially equal or higher quality than the standards and codes specified will be accepted subject to the Procuring Entity's Representative's prior review and written consent. Differences between the standards specified and the proposed alternative standards shall be fully described in writing by the Contractor and submitted to the Procuring Entity's Representative at least twenty-eight (28) days prior to the date when the Contractor desires the Procuring Entity's Representative's consent. In the event the Procuring Entity's Representative determines that such proposed deviations do not ensure substantially equal or higher quality, the Contractor shall comply with the standards specified in the documents.

These notes are intended only as information for the Procuring Entity or the person drafting the Bidding Documents. They should not be included in the final Bidding Documents.

Proposed Construction of Solar Powered Four Storey 20 Classroom Academic Building (Phase 1)

BASC New Site Campus

TECHNICAL SPECIFICATIONS

BULACAN AGRICULTURAL STATE COLLEGE

Pinaod, San Ildefonso, Bulacan

October 2022

SPECIFICATIONS

1. GENERAL REQUIREMENTS

- 1.1 These specifications are intended to cover all labor and materials required for the complete construction of the proposed projects as shown in the working drawings as described herein.
- 1.2 Materials and/ or work not specifically mentioned in the specifications, working drawings, and other contract documents but is implied and deemed necessary to complete the work shall be supplied by the Contractor and executed in a workman-like manner, of appropriate number, location, and size of the highest quality available without extra cost to the Owner.
- 1.3 The Owner reserves the right to alter and/or omit any part of the plans with the approval of the Architect or Engineer as the case may be. Any extra charge must be situated to the Architect and/or Project Manager for approval before final acceptance.
- 1.4 The Contractor shall secure all permits and licenses as required and also shall be responsible for all the liabilities, under Workmen's Compensation, SSS, Insurance, etc.
- 1.5 The Contractor shall furnish for approval of the Architect/Engineer, with promptness, samples as specified or required. Works shall be in accordance with the approved samples.
- 1.6 The Contractor shall guarantee the works, except for those with specific guarantee for a period of one (1) year after final acceptance by the Owner. He shall repair, replace and make good at his expenses any and all defects, which may arise during that term of guarantee and warranty due to defective workmanship and/or interior quality of materials.

2. METHODS OF CONSTRUCTION

- 2.1 The construction shall be done in the manner that would cause least disturbance to neighborhood and occupant of the area. The contractor will be allowed to work 24 hours if necessary to complete the work on time subject to approval of the owner.
- 2.2 All works to be done shall be of the best quality and workmanship.

3. MASONRY

- 3.1 Exterior wall should be CHB 5 inches wall bearing with 10 mm diameter reinforcement bars spaced @ 0.80 meter for vertical and for every 3 layers of CHB for horizontal bars.
- 3.2 Partition wall should be CHB 5 inches with 10 mm diameter reinforcement bars spaced @ 0.80 meter for vertical and for every 3 layers of CHB for horizontal bars in rooms, hallway, and toilet.
- 3.3 Low partition should be CHB 4 inches 1.80 meters high with 10 mm diameter reinforcement bars spaced @ 0.80 meters for vertical and for every 3 layer of CHB for horizontal bars in toilet partition/cubicles.

4. WALL FINISHES

- 4.1. Interior walls finishes should be smooth plain cement plaster; concrete neutralizer treatment; patching; paint finish (BOYSEN paint or approved equal).

NOTE: Patchwork should be followed with one coat of concrete primer as primer-surfacer to reduce unsightly uneven appearance after topcoat application.

- 4.2. Exterior wall finishes should be smooth plain cement plaster; concrete neutralizer treatment; patching; 2 coat paint finish (BOYSEN paint or approved equal)
- 4.3. Provide 30 cm x 60 cm glazed wall tiles (EUROTILES or approved equal) from finish floor line to 1.80 meter high, for all toilet and cubicles
- 4.4. Provide 30 cm x 60 cm glazed wall tiles (EUROTILES or approved equal) for splashboards for lavatories in laboratory/ kitchen
- 4.5. Provide simulated stone cladding (ASI, STONE AGE or approved equal) if applicable, see plans and drawings.

5. CEILING FINISHES

- 5.1. All interior ceiling - 4.5 mm thick fiber cement HARDIFLEX ceiling board riveted on metal furring channels providing a V-cut in every joint; prevent rivet head to exposed in ceiling surface; patching all rivets and joints w/ skim coat; 2 coat paint finish flat latex paint (BOYSEN or approved equal).
- 5.2. Outside ceiling – 8” x L x 0.4 mm thick spandrel (UNION Brand or approved equal).
- 5.3. Provide eaves hole for ventilation (see plans and drawings)
- 5.4. Provide 4” ceiling drop if necessary (see plans and drawings).

6. CARPENTRY WORKS

- 6.1. Cabinets beneath the lavatory/ kitchen counters in 2” x 3” KD treated wood frame; ¾” MDF membrane press doors w/ liston; paint finish.
- 6.2. Provide concealed hinges and handle for cabinet doors.
- 6.3. All door jamb should be 2’ x 6” KD treated wood, paint finish.

7. DOORS/HARDWARES

- 7.1. 1.0 m x 2.1 m x 41 mm thick kiln dry solid panel-type door w/ simulated wood grain including 50 mm x 150 mm solid door jamb w/ simulated wood grain; paint finish. For classrooms (see plans and drawings)
- 7.2. 0.8 m x 2.1 m flush door w/ jamb, for common and PWD CR;
- 7.3. 0.6 m x 1.6 m aluminum (ANALOK) door w/ handle, hinges and locksets for cubicle in toilets.
- 7.4. 0.7m x 2.1 m flush door – 1/4 “ thick marine plywood in 2” x 2” KD treated wood frame w/ jamb; for stockroom/electrical room/beneath the stairs; paint finish.

- 7.5. Provide 1 set of door knob (YALE or approved equal) and 4 pcs of 3-1/2” hinges (loose pin STANLEY or approved equal) each panel-type door.

8. WINDOWS

- 8.1. 1.8 m x 1.2 m Sliding window 0.90m from finish floor line (see plans and drawings)
- 8.2. 0.5 m x 0.5 m aluminum and glass awning window elevated 1.80m from finish floor line for toilets. (see plans and drawings)
- 8.3. All windows shall have grills made of 1” x 1” x 1.2 mm thick galvanize iron square tube welded (see plans and drawings); quick drying enamel paint finish.
- 8.4. All aluminum frames shall be of the best quality, ANALOK finish free from internal defects.
- 8.5. All glass shall be 1/4” thick brown in color.

9. TILE WORKS

- 9.1. 60 cm x 60 cm double polish glazed tiles, EUROTILES or approved equal, for flooring **of rooms & hallways** at ground and 2nd floor (submit sample for approval).
- 9.2. 30 cm x 30 cm unglazed tiles, EUROTILES or approved equal for landing, thread, and riser in all stairs. (submit sample for approval).
- 9.3. 30 cm x 60 cm glazed tiles, EUROTILES or approved equal, for walls of toilets and cubicles. (submit sample for approval).
- 9.4. 30 cm x 30 cm unglazed tiles, EUROTILES or approved equal for flooring of toilets and cubicles. (submit sample for approval).
- 9.5. 60 cm x 60 cm double polish glazed tiles, EUROTILES or approved equal for countertops and 30 cm x 60 cm double polish glazed tiles for splashboard for sink and lavatories. (submit sample for approval).
- 9.6. Provide tile grout for tile joints.
- 9.7. Provide 2 coats of water proofing before laying of floor tiles in all toilets in the second floor.

10. SANITARY WORK/ FITTINGS & FIXTURE

10.1. FITTINGS & FIXTURES

- 10.1.1. Wáter closet - closed-coupled wáter closet by POZZI or approved equal w/ complete fittings and accessories. (submit sample for approval).
- 10.1.2. Lavatory - basin-type counter lavatory by POZZI or approved equal w/ complete fittings and accessories. (submit sample for approval).
- 10.1.3. Lavatory faucet - basin mixer w/ complete accessories by HCG or approved equal. (submit sample for approval).
- 10.1.4. Urinal - wash down/ gravity-flushing by HCG or approved equal w/ complete fittings and accessories. (submit sample for approval)
- 10.1.5. Soap holder – by POZZI or approved equal.
- 10.1.6. Tissue holder – by POZZI or approved equal.
- 10.1.7. Floor drain – 4” x 4” stainless steel floor drain.
- 10.2. 25 mm and 20 mm polypropylene random (PPR) pipes and PPR fittings for wáter supply lines/ cold wáter lines. (as per plan).
- 10.3. 100mm (4”) and 50 mm (2”) diameter unplasticized polyvinyl chloride (uPVC) sanitary pipes and fittings (neltex orange series 1000). (as per plan).
- 10.4. One (1) septic tank (as per plan)
- 10.5. Drainage system and catch basins (as per plan)
- 10.6. Provide p-trap to all floor drains and sink.

11. PAINTING WORKS

Materials Brand – BOYSEN or APPROVED EQUAL.

11.1. FOR INTERIOR/EXTERIOR CONCRETE PLASTER:

- Pre-treatment : Concrete Neutralizer. Test with litmus or PH paper
- First Coat : Water-Based Epoxy Primer (for badly weathered concrete or when long lasting durability is desired)
- Patchwork : Patch-eeze Patching Compound.

NOTE: Patchwork should be followed with one coat of Concrete Primer as primer-surfacer to reduce unsightly uneven appearance after topcoat application.

Second Coat : Two (2) coats of Semi-gloss Latex.

12.2. FOR INTERIOR CEILINGS:

First Coat : Interior Primer and Sealer

Patchwork : Skim coat

Second Coat : Two (2) coats of Flat Latex

12.3. FOR INTERIOR WOODWORKS AND DOORS:

First Coat : Wood Putty

Second Coat : Two (2) coats of Quick Drying Enamel.

12. ELECTRICAL WORKS

12.1. WIRES / CONDUCTORS

12.1.1. Power line - Insulated Copper Wire for 600V level, THW for main feeder and TW for load side, Sycwin, Philflex or approved equal.

12.2. CONDUITS

12.2.1. Service Entrance – Rigid Steel Conduit (RSC), galvanized iron Schedule 40.

12.2.2. Internal & Embedded – PVC pipes by Powerguard or approved equal

12.3. FIXTURES & DEVICES

12.3.1. Utility Box – 2” x 4” Poly or approved equal.

12.3.2. Junction Box – 4” x 4” w/ cover Poly or approved equal.

12.3.3. Switches – 2” x 4” switch set by Panasonic or approved equal (1 gang/2 gang/3 gang) see plans and drawings.

12.3.4. Outlets – 2” x 4” duplex convenience outlet set by Panasonic or approved equal.

12.3.5. Panel Board – Ga. # 16 metal enclosure with copper bus bar, dead front, flush mounted, Nema Brand or approved equal.

12.3.6. Circuit Breaker – Molded case polyester resin, bolt on type thermal magnetic type, common internal trip, 250V AC, 10KAIC minimum, General Electric or approved equal (ampere rating as specified on plans).

12.3.7. Grounding System – 16 mm dia. X 3000mm hot dipped Galvanized Steel Ground Rod.

12.4. LIGHTING FIXTURES

12.4.1. 40 watts luminaire LED light w/ aluminum reflector (surfaces type).

12.4.2. 6” dia. Pinlight receptacle w/ 16 watts LED bulb Firefly or approved equal.

13. CONCRETE WORKS

14.1. Class A mixture (1 part portland cement, 2 part sand, and 4 part gravel) for slabs in 2nd floor and landings, stairs, columns, beams, lintel beams, tie beams, column footings, wall footings, canopy and septic tank.

14.2. Class B mixture (1 part portland cement, 2-1/2 part sand, and 5 part gravel) for slabs in ground floor and all other concrete not mention in 14.1.

14.3. Cement plaster must be 1 part portland cement, and 3 part sand.

14. MISCELLANEOUS

14.1. Provide 1/4” thick x 4 ft. high mirror glass for wall of all toilets covering the entire length of countertops of lavatory.

14.2. Provide pebbles stone for all ramp-up and exterior steps/stairs covering the tread and riser.


- 14.3. Stairs and PWD ramp-up - Provide 2" Ø x 1.5 mm thick stainless tube (mirror type SUS 304) for stairs handrail and main post; 1-1/2" Ø x 1.5 mm thick stainless tube for vertical members; 1" Ø x 1.5 mm thick stainless tube for horizontal members. Buffing finish.
- 14.4. Corridor Railing – Provide 2 x 4 x 2 mm thick rectangular tube for handrail; 3/8" thick x 1-1/2" flat bar for vertical members; 12 mm Ø round bar for horizontal members. All joints must be welded together. Paint finish.
- 14.5. Provide concrete cladding as specified in the drawing.

Section VII. Drawings

38



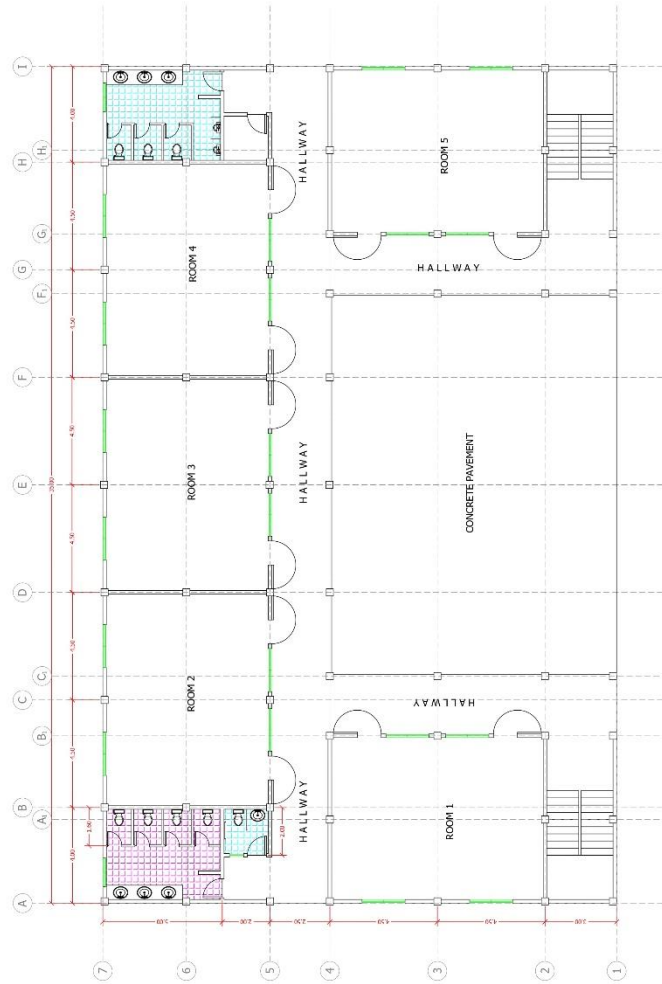
GROUND FLOOR PLAN
SCALE 1:100

	OWNER BULACAN AGRICULTURAL STATE COLLEGE ADDRESS: PAVAO, SANTIPOSONO, BULACAN	DESIGNED BY: <div>Civil Engineer</div> <div>DATE ISSUED: FIG. NO. 1 TITLE:</div>	PROJECT TITLE PROPOSED CONSTRUCTION OF SOLAR POWERED 1-STORY 20 CLASSROOMS ACADEMIC BLDG. PHASE 1 LOCATION TROPY VILLAGE, SANTIPOSONO, BULACAN	APPROVED BY JOHN EDWARD Y. CRUZ, PH.D. (DIRECTOR - PLANNING & DESIGN DEPARTMENT) JAMESON H. TAN, PH.D. PRESIDENT	SHEET CONTENT FLOOR PLAN	REVISIONS		PROJECT NO. DRAWN BY: CHECKED BY: DATE:	SHEET NO. A-02
						MARK	DATE		



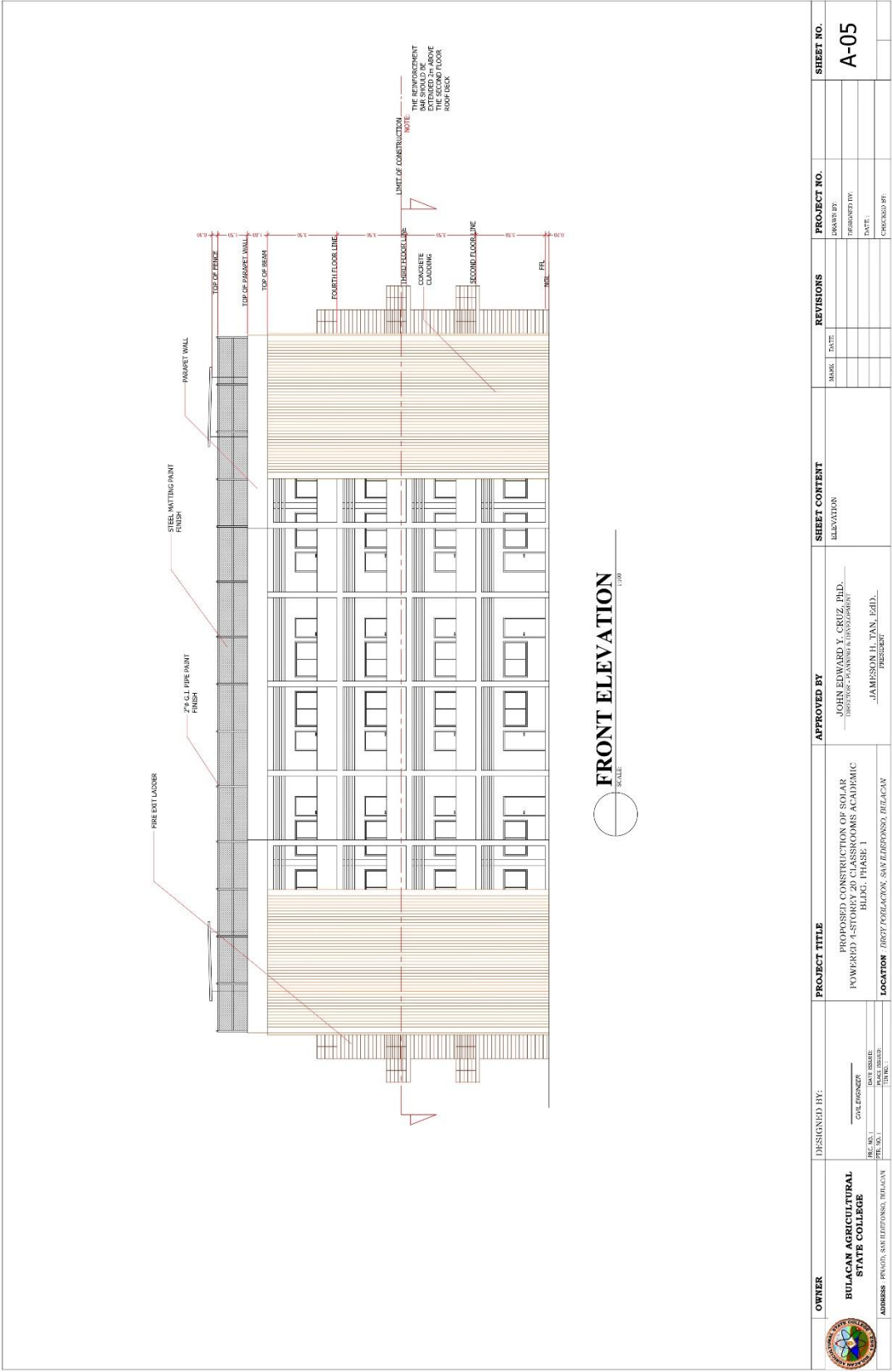
SECOND TO FOURTH FLOOR PLAN
SCALE: 1/8" = 1'-0"

 OWNER BULACAN AGRICULTURAL STATE COLLEGE ADDRESS: PANGLO, SANTIPOSONO, BULACAN	DESIGNED BY: CHL ENGINEER DATE ISSUED: FILE NO. 1 TOWN:	PROJECT TITLE PROPOSED CONSTRUCTION OF SOLAR POWERED 11-STORY BUILDING FOR ACADEMIC BLDG. PHASE 1 LOCATION URGY CORRAJON, SANTIPOSONO, BULACAN	APPROVED BY JOHN EDWARD Y. CRUZ, PH.D. REGISTERED PLANNER & ARCHITECT JAMESON H. TAN, PH.D. PRESIDENT	SHEET CONTENT		REVISIONS MARKS: DATE:	PROJECT NO. DRAWN BY: CHECKED BY: DATE:	SHEET NO. A-03
				FLOOR PLAN				

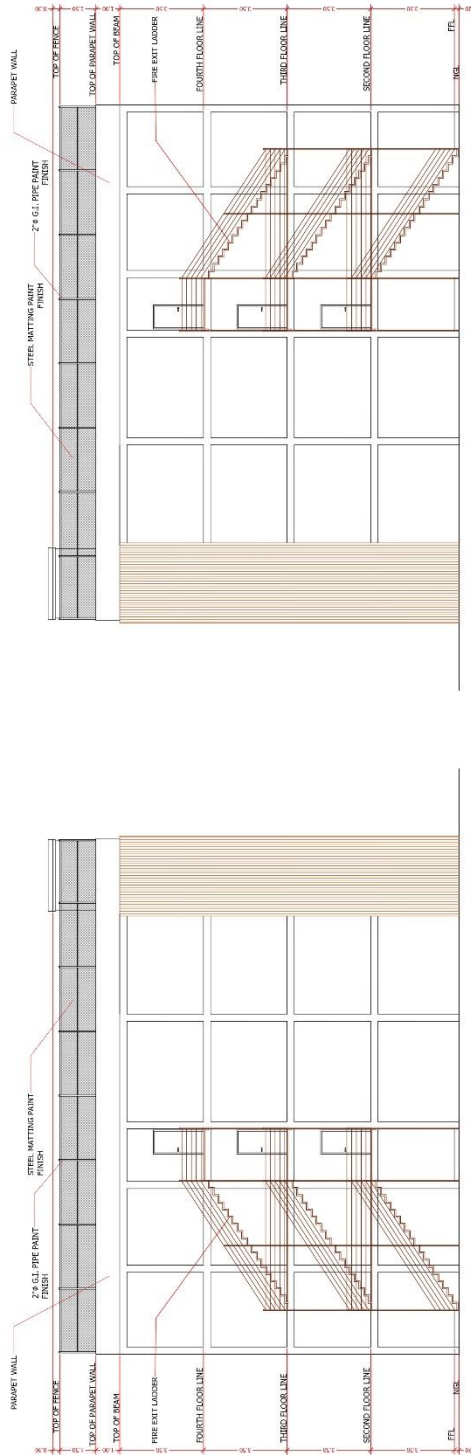


ROOF DECK FLOOR PLAN

1:100




	OWNER BULACAN AGRICULTURAL STATE COLLEGE ADDRESS: PAVAO, SANTIPOSONO, BULACAN	DESIGNED BY: _____ C. L. ENRIQUEZ DATE ISSUED: _____ PLACE ISSUED: _____ SHEET NO. 1 TOTAL SHEETS: _____ UNITED 1	PROJECT TITLE PROPOSED CONSTRUCTION OF SOLAR POWERED 1-STORY 20 CLASSROOMS ACADEMIC BLDG. PHASE 1 LOCATION TERRY VILLACORAN, SANTIPOSONO, BULACAN	APPROVED BY JOHN EDWARD Y. CRUZ, JR.D. (REGISTERED PLANNER & ARCHITECT) JAMESON H. TAN, JR.D. (PRESIDENT)	SHEET CONTENT ELEVATION	REVISIONS		PROJECT NO.	SHEET NO. A-05
						MARK	DATE		



SIDE ELEVATION





	OWNER	DESIGNED BY:	PROJECT TITLE	APPROVED BY	SHEET CONTENT	REVISIONS	PROJECT NO.	SHEET NO.
	BULACAN AGRICULTURAL STATE COLLEGE	CIVIL ENGINEER	PROPOSED CONSTRUCTION OF SOLAR POWERED 1-STORY 20 CLASSROOMS ACADEMIC BLDG. PHASE 1	JOHN EDWARD Y. CRUZ, PH.D. (REGISTERED PLANNER & TECHNOLOGIST)	ELEVATION		DRAWN BY:	A-06
		PRE. NO. 1 DATE ISSUED: PREP. NO. 1 DATE REC'D:	DATE ISSUE TIME REC'D:	LOCATION (BAY PAVAO, SANTOPIOSO, BULACAN)	JAMESON H. TAN, PH.D. PRESIDENT		DATE:	
ADDRESS: PAVAO, SANTOPIOSO, BULACAN								



 BULACAN AGRICULTURAL STATE COLLEGE	DESIGNED BY: <div>CHL ENGINEER</div>	PROJECT TITLE PROPOSED CONSTRUCTION OF SOLAR POWERED 1-STORY 20 CLASSROOMS ACADEMIC BLDG. PHASE 1	APPROVED BY JOHN EDWARD Y. CRUZ, PH.D. (REGISTERED PLANNER & TECHNOLOGIST)	SHEET CONTENT ELEVATION	REVISIONS		PROJECT NO.	SHEET NO. A-07
					MARK	DATE		
OWNER BULACAN AGRICULTURAL STATE COLLEGE	<div>REC. NO. 1 DATE SUBMITTED JUN. 30, 1</div> <div>PLACE STAMPED UNDED.</div>	LOCATION TERRY COLLABORON, SANTILUPONSA, BULACAN	JAMESON H. TAN, PH.D. PRESIDENT					
ADDRESS PNUOD, SANTILUPONSA, BULACAN								

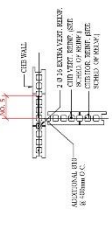
GENERAL CONSTRUCTION NOTES

- STRUCTURAL SPECIFICATIONS
- A. NOTES ON CONCRETE MIXES AND PLACING:
- A.1 FOOTING, COLUMNS, SLABS BEAMS, GIRDERS & STAIRS
- $f'c=20.68$ MPa (3,000psi) AT 28 DAYS
- A.2 GROUND FLOOR SLAB ON FILL
- $f'c=17.24$ MPa (2,500 psi) AT 28 DAYS
- A.3 OTHERS NOT SPECIFIED
- $f'c=20.68$ MPa (3,000 psi) AT 28 DAYS
- A.4 CONCRETE SHALL BE DEPOSITED IN ITS FINAL POSITION WITHOUT SEGREGATION, REHANDLING OR FLOWING. PLACING SHALL BE DONE PREFERABLY WITH BUGGIES, BUCKETS, OR WHEEL BARROWS, NO CHUTES WILL BE ALLOWED EXCEPT TO TRANSFER CONCRETE FROM HOPPERS TO BUGGIES, WHEEL BARROWS OR BUCKETS IN WHICH CASE THEY SHALL NOT EXCEED SIX THOUSAND (6000 mm) IN AGGREGATE LENGTH.
- NO DEPOSITING OF CONCRETE SHALL BE ALLOWED WITHOUT THE USE OF VIBRATORS UNLESS AUTHORIZED IN WRITING BY THE DESIGNERS AND ONLY FOR UNUSUAL CONDITIONS WHERE VIBRATORS IS EXTREMELY DIFFICULT TO ACCOMPLISH.
- B. NOTES ON REINFORCEMENTS:
- B.1 ALL MILD REINFORCING BARS SHALL BE ROUND * DEFORMED STRUCTURAL GRADE * CONFORMING TO ASTM A-615
- $f_y = 275$ MPa (40 ksi) (12mm ϕ AND BELOW), $f_y = 415$ MPa (60ksi) (16mm ϕ AND ABOVE)
- B.2 ALL REINFORCING BAR DIAMETER IN MILLIMETER INDICATED ON THE PLANS SHOULD BE STRICTLY FOLLOWED. ANY DEVIATION FROM THOSE SPECIFIED SHALL HAVE THE WRITTEN APPROVAL OF THE STRUCTURAL ENGINEER.
- B.3 WHERE SPLICING IS REQUIRED; SLAB, BEAM AND GIRDER REINFORCING BARS SHALL BE SPLICED AT QUARTER POINTS AND A MINIMUM LENGTH OF 40 TIMES THE DIAMETER OF THE BAR. (SEE TYPICAL BEAM DETAIL)
- B.4 COLUMN VERTICAL BARS SHALL BE SPLICED AT MIDDLE THIRD
- F. GENERAL NOTES:
- F.1 STANDARD CONSTRUCTION PROCEDURES AS PER " NATIONAL BUILDING CODE " AND " NATIONAL STRUCTURAL CODE FOR BUILDINGS " SHOULD BE STRICTLY FOLLOWED IN THE EXECUTION OF THE PROJECT.
- F.2 BARS OF REINFORCED CONCRETE EXPOSED TO THE WEATHER SHALL PREFERABLY BE PROTECTED WITH AT LEAST 38 mm. AND IN NO CASE LESS THAN 25 mm. CONCRETE. THIS PROVISION MAYBE WAIVED WHEN ADEQUATE WATER-PROOFING IS PROVIDED. (SEE TYPICAL BEAM DETAIL)
- F.3 SLABS ON FILL MUST NOT BE PLACED UNLESS FILL HAS BEEN PROPERLY COMPACTED. ALL SLABS ON FILL SHALL BE PROVIDED WITH 100 mm. CLEAN COARSE SAND BED BACKFILLING OF ALL EXCAVATED AREAS AND PREPARATION OF SUB - BASE SHALL BE WELL COMPACTED TO AT LEAST 95% OF THE MODIFIED PROCTOR DENSITY BEFORE LAYING 100 mm. CLEAN COARSE SAND BED.
- F.4 IT SHALL BE THE DUTY AND RESPONSIBILITY OF THE CONTRACTOR TO PROVIDE SHEET PILES, PRECAUTIONARY MEASURES TO ENSURE SAFETY OF ADJACENT PROPERTIES AND OCCUPANTS.
- F.5 IN THE INTERPRETATION OF THIS DRAWINGS INDICATED DIMENSIONS SHALL GOVERN AND DISTANCES OR SIZE SHALL NOT BE SCALED FOR CONSTRUCTION PURPOSES.
- E. NOTES ON COLUMN:
- E.1 NO PIPES SHALL BE EMBEDDED INSIDE ANY COLUMN.
- D. NOTES ON FOUNDATION:
- D.1 FOUNDATION IS DESIGNED FOR AN ALLOWABLE SOIL BEARING CAPACITY OF 120 kPa. PRIOR TO CONSTRUCTION, THE CONTRACTOR SHALL CONDUCT SOIL BEARING TEST TO VERIFY THE ACTUAL SOIL BEARING CAPACITY AND REPORT IN WRITING TO THE DESIGNER THE ACTUAL SOIL CONDITION AS PER TEST RESULT.
- D.2 NO FOOTING SHALL REST ON BACKFILLED MATERIALS.
- D.3 MINIMUM CONCRETE PROTECTION FOR REINFORCEMENT SHALL BE 75 mm. CLEAR FOR CONCRETE DEPOSITED AGAINST THE GROUND AND 50 mm. FOR CONCRETE DEPOSITED AGAINST FORMWORK.
- D.4 IN CASES WHERE REQUIRED FOOTING LEVELS SHOW HONEYCOMBED STRUCTURE CONTAINING LOOSE MATERIALS, REMOVE LOOSE MATERIALS AND FILL ALL VOIDS WITH LEAN CONCRETE. USE. VIBRATOR TO ASSUME WELL COMPACTED CONCRETE IN ALL PARTITIONS.
- C. NOTES ON STRUCTURAL STEEL:
- C.1 ALL STRUCTURAL STEEL, BOTH ANGLE AND STEEL PLATES SHALL CONFORM TO ASTM A-36 $f_y = 248.16$ MPa (36,000 psi)
- C.2 WELDING ELECTRODES SHALL BE E70 XX SERIES.
- C.3 MACHINE BOLTS AND ANCHORE BOLTS SHALL CONFORM TO ASTM A-325.
- D. NOTES ON FOUNDATION:
- D.1 FOUNDATION IS DESIGNED FOR AN ALLOWABLE SOIL BEARING CAPACITY OF 120 kPa. PRIOR TO CONSTRUCTION, THE CONTRACTOR SHALL CONDUCT SOIL BEARING TEST TO VERIFY THE ACTUAL SOIL BEARING CAPACITY AND REPORT IN WRITING TO THE DESIGNER THE ACTUAL SOIL CONDITION AS PER TEST RESULT.
- D.2 NO FOOTING SHALL REST ON BACKFILLED MATERIALS.
- D.3 MINIMUM CONCRETE PROTECTION FOR REINFORCEMENT SHALL BE 75 mm. CLEAR FOR CONCRETE DEPOSITED AGAINST THE GROUND AND 50 mm. FOR CONCRETE DEPOSITED AGAINST FORMWORK.
- D.4 IN CASES WHERE REQUIRED FOOTING LEVELS SHOW HONEYCOMBED STRUCTURE CONTAINING LOOSE MATERIALS, REMOVE LOOSE MATERIALS AND FILL ALL VOIDS WITH LEAN CONCRETE. USE. VIBRATOR TO ASSUME WELL COMPACTED CONCRETE IN ALL PARTITIONS.
- E. NOTES ON COLUMN:
- E.1 NO PIPES SHALL BE EMBEDDED INSIDE ANY COLUMN.

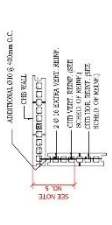
OWNER	DESIGNED BY:	PROJECT TITLE	APPROVED BY	SHEET CONTENT	REVISIONS	PROJECT NO.	SHEET NO.
 BULACAN AGRICULTURAL STATE COLLEGE	 CIVIL ENGINEER	PROPOSED CONSTRUCTION OF SOLAR POWERED 1-STOREY CLASSROOMS ACADEMIC BILAG, PHASE 1	JOHN EDWARD Y. CRUZ, JR.D. REGISTERED PLANNER & ARCHITECT	GENERAL NOTES	DATE: _____ DRAWN BY: _____ CHECKED BY: _____		S-03
ADMIN: PRIMO, SANTILFONSA, BULACAN	REV. NO. 1 DATE REVISION: _____ BY: _____	LOCATION: IRIGY CORPORATION, SANTEFONSO, BULACAN	JAMESON H. TAN, JR.D. PRESIDENT				

NOTES ON MASONRY AND CONCRETE BLOCKS

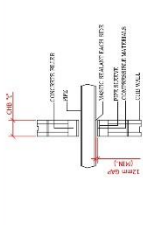
1. ALL INFORMATION REGARDING THE PROJECT MUST BE KEPT AT THE PROJECT SITE. NO ONE SHOULD BE ALLOWED TO ENTER THE PROJECT SITE WITHOUT THE PROJECT SUPERVISOR'S PERMISSION. A PERSONNEL COMPASSIONATE TO BE KEPT AT THE PROJECT SITE AT ALL TIMES.
2. PROJECT SUPERVISOR SHALL BE RESPONSIBLE FOR THE PROJECT. ALL PROJECTS SHALL BE COMPLETED WITHIN THE SPECIFIED TIME FRAME.
3. ALL PROJECTS SHALL BE COMPLETED WITHIN THE SPECIFIED TIME FRAME. ALL PROJECTS SHALL BE COMPLETED WITHIN THE SPECIFIED TIME FRAME.
4. ALL PROJECTS SHALL BE COMPLETED WITHIN THE SPECIFIED TIME FRAME. ALL PROJECTS SHALL BE COMPLETED WITHIN THE SPECIFIED TIME FRAME.
5. ALL PROJECTS SHALL BE COMPLETED WITHIN THE SPECIFIED TIME FRAME. ALL PROJECTS SHALL BE COMPLETED WITHIN THE SPECIFIED TIME FRAME.
6. ALL PROJECTS SHALL BE COMPLETED WITHIN THE SPECIFIED TIME FRAME. ALL PROJECTS SHALL BE COMPLETED WITHIN THE SPECIFIED TIME FRAME.
7. ALL PROJECTS SHALL BE COMPLETED WITHIN THE SPECIFIED TIME FRAME. ALL PROJECTS SHALL BE COMPLETED WITHIN THE SPECIFIED TIME FRAME.
8. ALL PROJECTS SHALL BE COMPLETED WITHIN THE SPECIFIED TIME FRAME. ALL PROJECTS SHALL BE COMPLETED WITHIN THE SPECIFIED TIME FRAME.
9. ALL PROJECTS SHALL BE COMPLETED WITHIN THE SPECIFIED TIME FRAME. ALL PROJECTS SHALL BE COMPLETED WITHIN THE SPECIFIED TIME FRAME.
10. ALL PROJECTS SHALL BE COMPLETED WITHIN THE SPECIFIED TIME FRAME. ALL PROJECTS SHALL BE COMPLETED WITHIN THE SPECIFIED TIME FRAME.



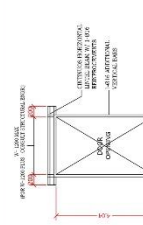
WALL REINFORCING AT INTERSECTION



WALL REINFORCING AT CORNER



SECTION _____

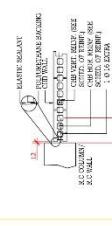


DOOR OPENING ELEVATION

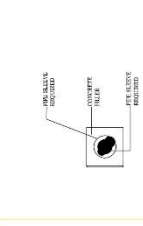
[illegible]

1. *Journal of the American Medical Association*, 1978; 239: 1000-1001.

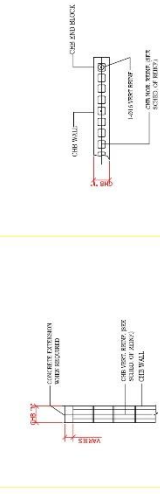
1. IN ORDER TO AVOID THE PROBLEM OF UNDESIRABLE ELECTRICAL PROPERTIES, IT IS THE CUSTOMARY PRACTICE TO INSULATE THE SURFACES OF POLYMER FILMS BY COATING THEM WITH AN ARCHITECTURAL FINISH.
2. AIL COMPLETE SPE. REFER TO ARCHITECTURAL PLAN.
3. FOR SURFACING AND UNDESIRABLE REFER TO ARCHITECTURAL FINISHING PLANS.
4. SEALS OF WIRING ELECTRICAL BOXES SHALL BE REMOVED WITH CAREFUL AT THE PPS HAS BEEN ALLOWED.
5. FOR THE SAME LOCATION REFER TO THE PLANS. FOR PPS HAS BEEN REMOVED REFER TO THE PPS.



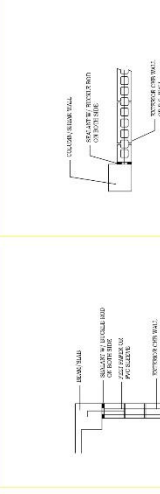
PIPE SLEEVE THRU WALL



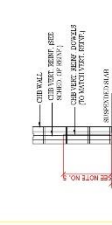
PIPE SLEEVE THRU WALL



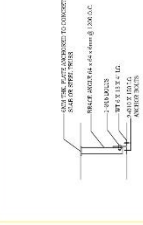
SECTION 4-13



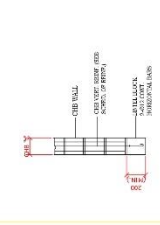
EXTERIOR WALL SUPPORT AT
BOTT. OF BEAM OR SLAB SOFFIT



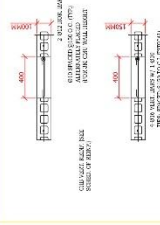
**WALL BASE REINFORCING AT
FLOOR W/ DEPRESSION**



SECTION



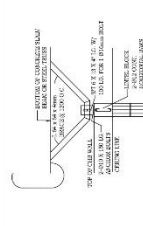
SECTION 41



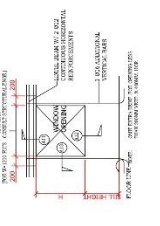
④ TYP. STIFFENER COLUMN
DET. ON CHB WALLS



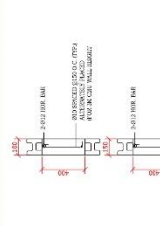
WALL BASE REINFORCING AT
FLAT FLOOR




WALL TOP SUPPORT IN AREAS

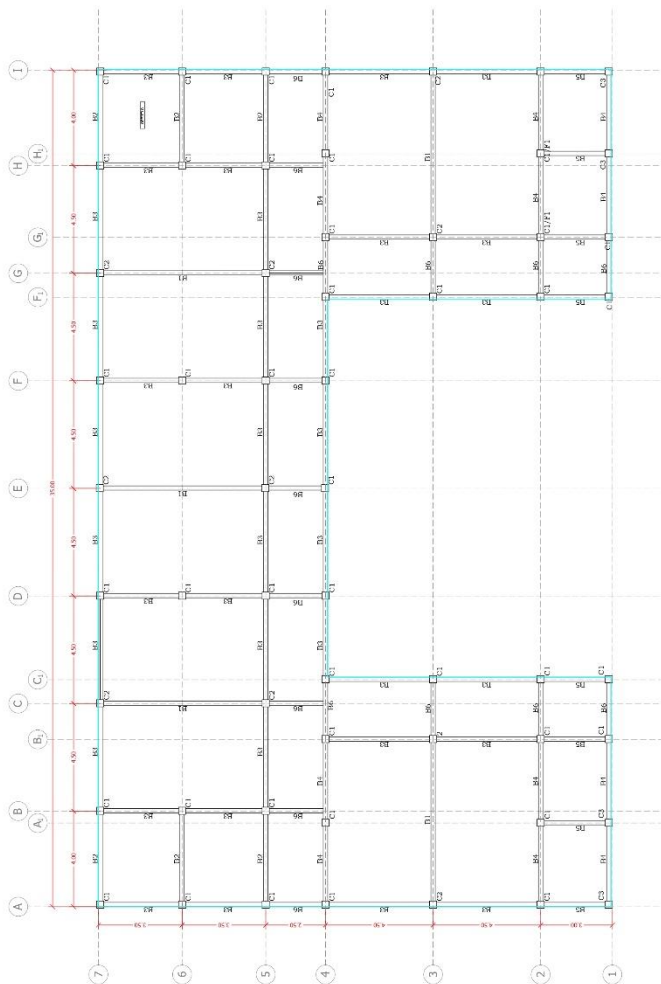


WINDOW OPENING ELEVATION




① TYP. CHB STIFFENER BEAM
DETAIL

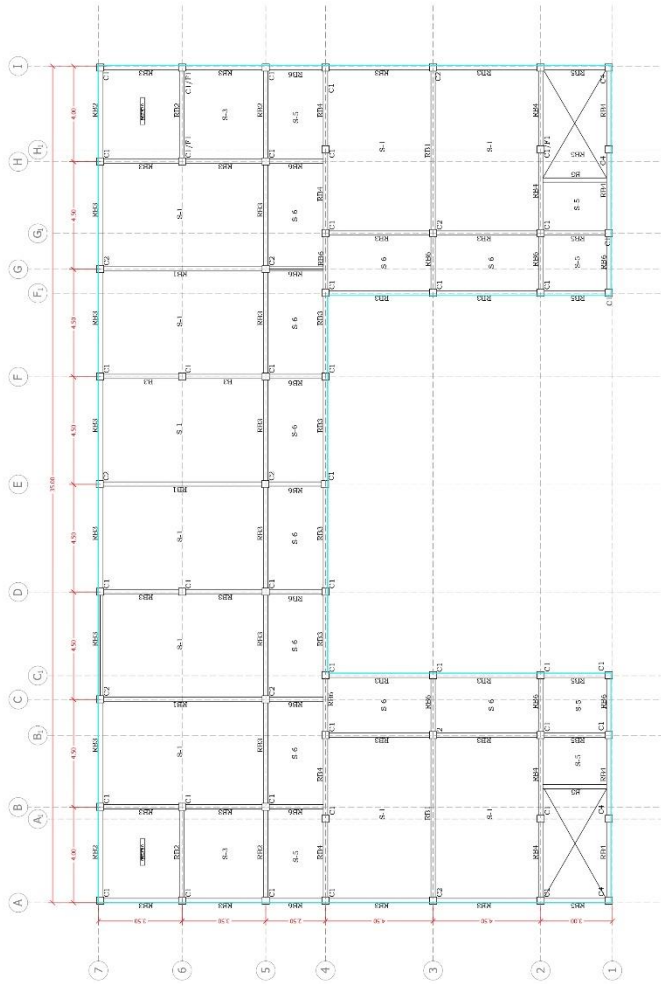
 OWNER BULACAN AGRICULTURAL STATE COLLEGE ADDRESS: PINAO, SAN LUIS, BULACAN	DESIGNED BY: _____ CUL ENGINEER REG. NO. 1 SEC. NO. 1 TEL. NO. 1 FAX NO. 1 E-MAIL NO. 1	PROJECT TITLE PROPOSED CONSTRUCTION OF SOLAR POWERED 4-STORY 20 CLASSROOMS ACADEMIC BLDG. PHASE 1 LOCATION TERTIOTACION, SANTILPOSO, BULACAN	APPROVED BY _____ JOHN EDWARD Y. CRUZ, PH.D. (DIRECTOR - PLANNING & DEVELOPMENT) _____ JAMISON H. TAN, EdD. PRESIDENT	SHEET CONTENT MISCELLANEOUS DETAILS MASONRY DETAILS	REVISIONS		PROJECT NO. DRAWN BY: _____ TITLED BY: _____ DATE: _____ CHECKED BY: _____	SHEET NO. S-05
					MARK: _____	DATE: _____		



MARK	G.P. TO FLOOR	SCHEDULE OF REINFORCED CONCRETE GIRDER										STAIRS	
		SPAN	B	D	TOP		BOT		TOP		BOT		
H1	1000	3500	350	350	500	500	350	350	450	450	350	350	1000
H2	1000	3500	350	350	500	500	350	350	450	450	350	350	1000
H3	1000	3500	350	350	500	500	350	350	450	450	350	350	1000
H4	1000	3500	350	350	500	500	350	350	450	450	350	350	1000
H5	1000	3500	350	350	500	500	350	350	450	450	350	350	1000
H6	1000	3500	350	350	500	500	350	350	450	450	350	350	1000
H7	1000	3500	350	350	500	500	350	350	450	450	350	350	1000
H8	1000	3500	350	350	500	500	350	350	450	450	350	350	1000
H9	1000	3500	350	350	500	500	350	350	450	450	350	350	1000
H10	1000	3500	350	350	500	500	350	350	450	450	350	350	1000
H11	1000	3500	350	350	500	500	350	350	450	450	350	350	1000
H12	1000	3500	350	350	500	500	350	350	450	450	350	350	1000
H13	1000	3500	350	350	500	500	350	350	450	450	350	350	1000
H14	1000	3500	350	350	500	500	350	350	450	450	350	350	1000
H15	1000	3500	350	350	500	500	350	350	450	450	350	350	1000
H16	1000	3500	350	350	500	500	350	350	450	450	350	350	1000
H17	1000	3500	350	350	500	500	350	350	450	450	350	350	1000
H18	1000	3500	350	350	500	500	350	350	450	450	350	350	1000
H19	1000	3500	350	350	500	500	350	350	450	450	350	350	1000
H20	1000	3500	350	350	500	500	350	350	450	450	350	350	1000
H21	1000	3500	350	350	500	500	350	350	450	450	350	350	1000
H22	1000	3500	350	350	500	500	350	350	450	450	350	350	1000
H23	1000	3500	350	350	500	500	350	350	450	450	350	350	1000
H24	1000	3500	350	350	500	500	350	350	450	450	350	350	1000
H25	1000	3500	350	350	500	500	350	350	450	450	350	350	1000
H26	1000	3500	350	350	500	500	350	350	450	450	350	350	1000
H27	1000	3500	350	350	500	500	350	350	450	450	350	350	1000
H28	1000	3500	350	350	500	500	350	350	450	450	350	350	1000
H29	1000	3500	350	350	500	500	350	350	450	450	350	350	1000
H30	1000	3500	350	350	500	500	350	350	450	450	350	350	1000

GROUND FLOOR FRAMING PLAN

 BULACAN AGRICULTURAL STATE COLLEGE	OWNER	DESIGNED BY:	PROJECT TITLE	APPROVED BY	SHEET CONTENT		REVISIONS	PROJECT NO.	SHEET NO.	
			PROPOSED CONSTRUCTION OF SOLAR POWERED 4-STORY 20 CLASSROOMS ACADEMIC BLDG. PHASE 1	JOHN EDWARD Y. CRUZ, PLD.			DATE	DATE		
		COLLEGE ENGINEER (REG. NO. 1) _____ DATE ISSUED: _____ PLACE ISSUED: _____								
		ARCHITECT (REG. NO. 1) _____ DATE ISSUED: _____ PLACE ISSUED: _____								
		ADDRESS: PAVILION, SANITARIUM, PULAN	LOCATION: DOCK 2, POLARON, SANITARIUM, PULAN							
			JAMESFIN H. TAN, Pld.							S-07



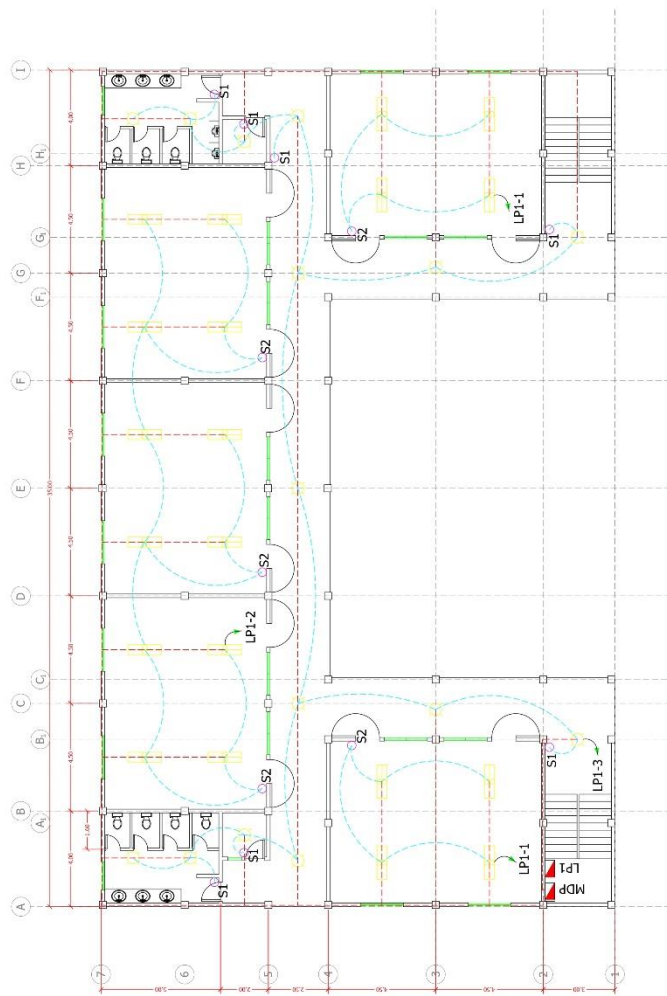
ROOF DECK FLOOR FRAMING PLAN
NOT TO SCALE

OWNER	DESIGNED BY:	PROJECT TITLE	APPROVED BY	SHEET CONTENT	REVISIONS	PROJECT NO.	SHEET NO.
 BULACAN AGRICULTURAL STATE COLLEGE ADDRESS: PNUAD, SANTILPODOSA, BULACAN	CHALONGZOR DATE SUBMIT: 10/10/2023 DATE REVISED: 10/10/2023	PROPOSED CONSTRUCTION OF SOLAR POWERED 1-5 STOREY BUILDING FOR ACADEMIC BLDG. PHASE 1 LOCATION: BRYC CORPORATION, SANTILPODOSA, BULACAN	JOHN EDWARD Y. CRUZ, JR.D. (REGISTERED PLANNER & ARCHITECT) JAMESON H. TAN, JR.D. PRESIDENT				S-09

NOTE:

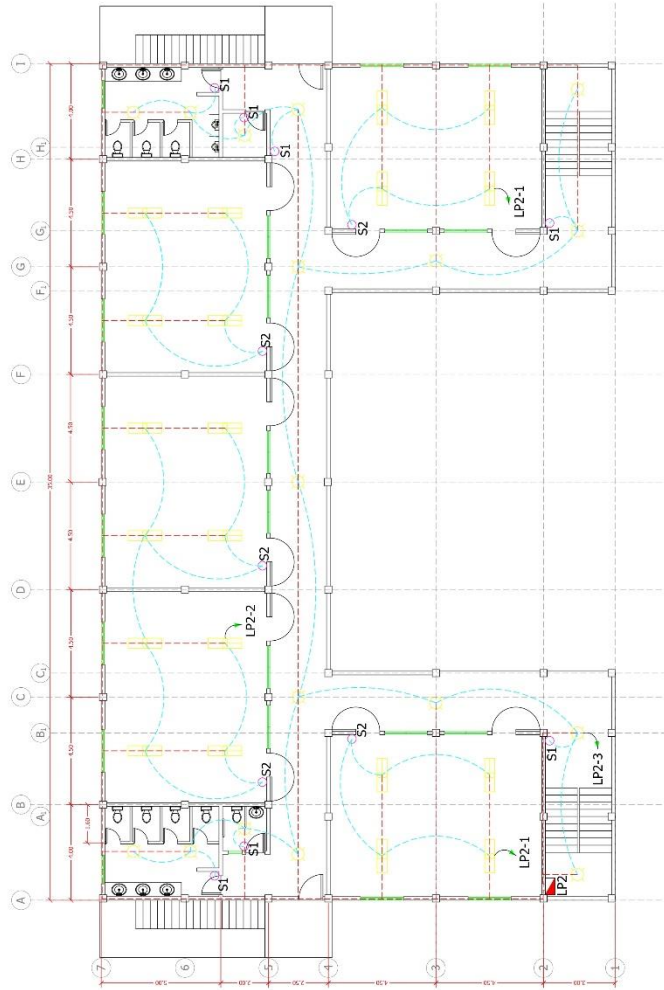
1. STAIR SPAN IS THE DISTANCE BETWEEN ADJACENT STAIR SUPPORTS WHETHER IT IS A BEAM, COLUMN, OR A WALL.
2. WITHOUT A STAIR SUPPORT LOCATION, CONSULT AND SEEK APPROVAL OF STRUCTURAL DESIGN ENGINEER.





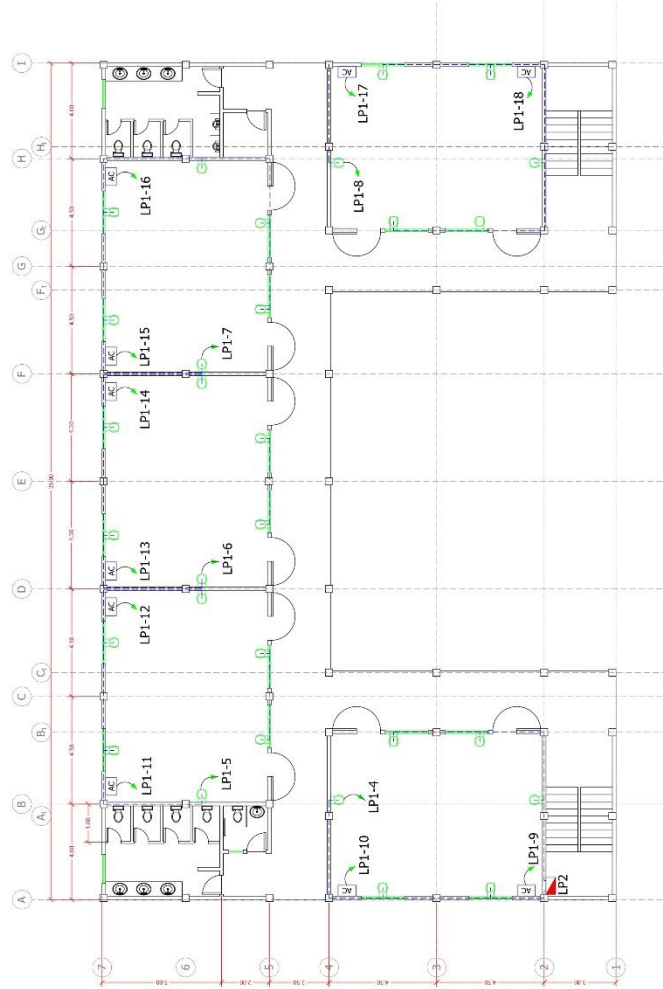
GROUND FLOOR PLAN
SCALE 1:100

	OWNER BULACAN AGRICULTURAL STATE COLLEGE ADDRESS: PAVILION, SANTEPEPONG, BULACAN	DESIGNED BY:		PROJECT TITLE PROPOSED CONSTRUCTION OF SOLAR POWERED 4-STORY 20 CLASSROOMS ACADEMIC BLDG. PHASE 1 LOCATION: BIRY FORGATION, SANTEPEPONG, BULACAN	APPROVED BY JOHN EDWARD Y. CRUZ, PH.D. <small>REGISTERED PLANNER & ARCHITECT</small> JAMESON H. TAN, EdD. <small>PRESIDENT</small>	SHEET CONTENT LIGHTING LAYOUT	REVISIONS		PROJECT NO. DRAWN BY: CHECKED BY: PROJECTED BY: DATE:	SHEET NO. E-01
		COLE FUSONER					MARK:	DATE:		
		REV. NO. 1 DATE ISSUED: PLACED IN FILE: DATE REC.:								



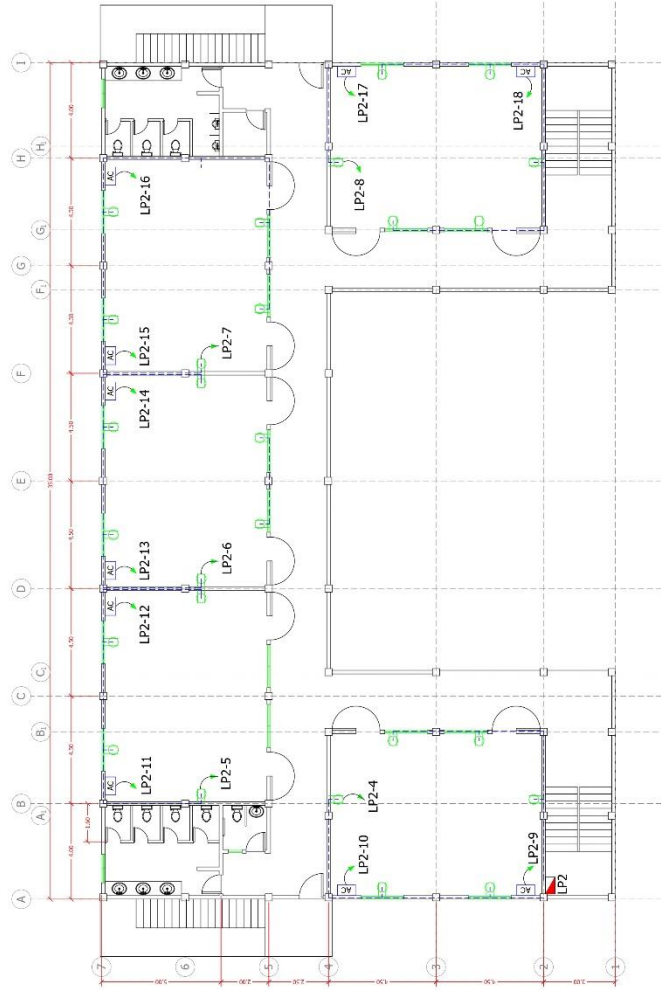
SECOND TO FOURTH FLOOR PLAN
SCALE: 1/8" = 1'-0"

	OWNER	DESIGNED BY:	PROJECT TITLE	APPROVED BY	SHEET CONTENT	REVISIONS	PROJECT NO.	SHEET NO.															
	BULACAN AGRICULTURAL STATE COLLEGE ADDRESS: PNUAD, SANTILPODOSA, BULACAN	CHL ENGINEER DATE ISSUED: FILE NO. 1 (1/1/2021)	PROPOSED CONSTRUCTION OF SOLAR POWERED 1-STORY 20 CLASSROOMS ACADEMIC BLDG. PHASE 1 LOCATION: TROY TORACION, SANTILPODOSA, BULACAN	JOHN EDWARD Y. CRUZ, PH.D. (REGISTERED PLANNER & ARCHITECT) JAMESON H. TAN, PH.D. PRESIDENT	LIGHTING LAYOUT	MARKS: DATE: <table><tr><td></td><td></td></tr><tr><td></td><td></td></tr><tr><td></td><td></td></tr><tr><td></td><td></td></tr><tr><td></td><td></td></tr></table>											DRAWN BY: <table><tr><td></td></tr><tr><td></td></tr><tr><td></td></tr><tr><td></td></tr><tr><td></td></tr></table>						



GROUND FLOOR PLAN
SCALE 1:100

	OWNER BULACAN AGRICULTURAL STATE COLLEGE ADDRESS: PAVAO, SANTIPOSONO, BULACAN	DESIGNED BY: CIVIL ENGINEER DATE: 08/11/2023 FILE NO.: 1	PROJECT TITLE PROPOSED CONSTRUCTION OF SOLAR POWERED 1-STORY BUILDING FOR ACADEMIC BLDG. PHASE 1 LOCATION: BAYO, SANTIPOSONO, BULACAN	APPROVED BY: JOHN EDWARD Y. CRUZ, JR., D.D. 1805200-6 PLANNING & DEVELOPMENT JAMESON H. TAN, JR., D.D. PRESIDENT	SHEET CONTENT CONVENIENCE OUTLET & AC OUTLET LAYOUT	REVISIONS		PROJECT NO. JASAM BY: REMOVED BY: DATE: CHECKED BY:	SHEET NO. E-03
					MARK	DATE			



SECOND TO FOURTH FLOOR PLAN
SCALE 1:100

	OWNER	DESIGNED BY:	PROJECT TITLE	APPROVED BY	SHEET CONTENT	REVISIONS	PROJECT NO.	SHEET NO.
	BULACAN AGRICULTURAL STATE COLLEGE	CIVIL ENGINEER	PROPOSED CONSTRUCTION OF SOLAR POWERED 1-STORY 20 CLASSROOMS ACADEMIC BLDG. PHASE 1	JOHN EDWARD Y. CRUZ, PH.D. REGISTERED PLANNER & TECHNOLOGIST	CONVENIENCE OF TILLET & AC OUTLET LAYOUT	DRAWN BY: DATE:	DRAWN BY:	E-04
		REV. NO. 1 DATE ISSUED: REV. NO. 1	LOCATION TROY TORACION, SANTIPOSSO, BULACAN	JAMESON H. TAN, PH.D. PRESIDENT	CHECKED BY:	DATE:	CHECKED BY:	
ADDRESS: PAVAO, SANTIPOSSO, BULACAN								

GENERAL NOTES :

ALL ELECTRICAL INSTALLATIONS SHALL BE DONE IN WORKMANLIKE MANNER AND IN ACCORDANCE WITH THE APPLICABLE REQUIREMENTS OF THE LATEST EDITION OF THE PHILIPPINE ELECTRICAL CODE (P.E.C.), NATIONAL BUILDING CODE OF THE PHILIPPINES, THE RULES & REGULATIONS OF BULACAN & THE REQUIREMENTS OF THE POWER COMPANY.

GROUNDING SHALL BE IN ACCORDANCE WITH THE APPLICABLE REQUIREMENTS OF THE LATEST EDITION OF THE PHILIPPINE ELECTRICAL CODE. ALL NON-CURRENT CARRYING METAL PARTS OF ELECTRICAL EQUIPMENT FRAMES OR ENCLOSURES SHALL BE CONNECTED TO EQUIPMENT GROUNDING SYSTEM WIRE WITH SUFFICIENT COPPER WIRE & SUITABLE TERMINAL LUGS.

THE CONTRACTOR SHALL BE RESPONSIBLE FOR COORDINATING THE WORK AMONG THE VARIOUS TRACES AS NECESSARY TO AVOID CONFLICTS AND TO INSURE THE INSTANT TOTAL OF ALL WIRING WITHIN THE AVAILABLE SHAPE MINIMUM SIZE OF WIRE TO BE USED FOR POWER AND LIGHTING SHALL BE 2.0mm.

LAYOUT SHOWN ON THE PLANS ARE DIAGRAMATIC AND SHALL WHEN NECESSARY BE ALTERED IN THE FIELD TO SUIT CONDITIONS AND LOCATION.

PULL BOXES SHALL BE PROVIDED WHENEVER NECESSARY TO FACILITATE WIRE PULLING EVEN IF THERE ARE NOT INDICATED ON PLANS.

ALL ELECTRICAL MATERIALS TO BE USED SHALL BE NEW & APPROVED TYPE FOR THE LOCATION AND PURPOSES.

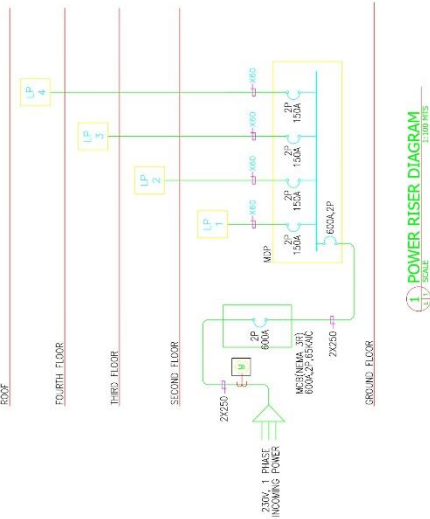
ALL WORKS SHALL BE DONE BY EXPERIENCED ELECTRICIANS AND UNDER SUPERVISION OF A DULY LICENSED ELECTRICAL ENGINEER.

CONDUCT INSULATION TEST ON ALL WIRES, FITURES AND DEVICES INSTALLED AND COMPLETED BEFORE APPLYING POWER. SUBMIT RECORDED MEASUREMENTS OF INSULATION TEST OF SERVICE ENTRANCE, FEEDERS AND BRANCH CIRCUIT TESTED.

REFER TO ELECTRICAL SPECIFICATIONS FOR SPECIFIC INFORMATION.

LEGEND:

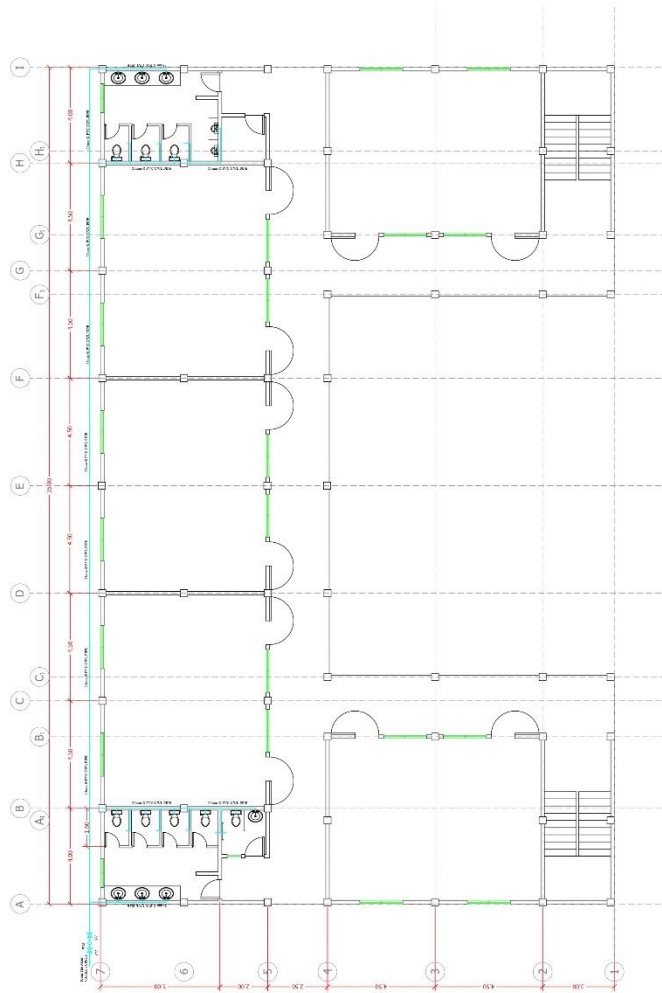
- LED BULB
- LOUVER MOUNTED LIGHT
- CONVENIENCE OUTLET
- PANEL BOX
- AIR CONDITION OUTLET
- SWITCH
- S1 SINGLE SWITCH
- S2 2 GANG SWITCH
- OUTLET LINE
- LIGHTING LINE
- SWITCH LINE



POWER RISER DIAGRAM

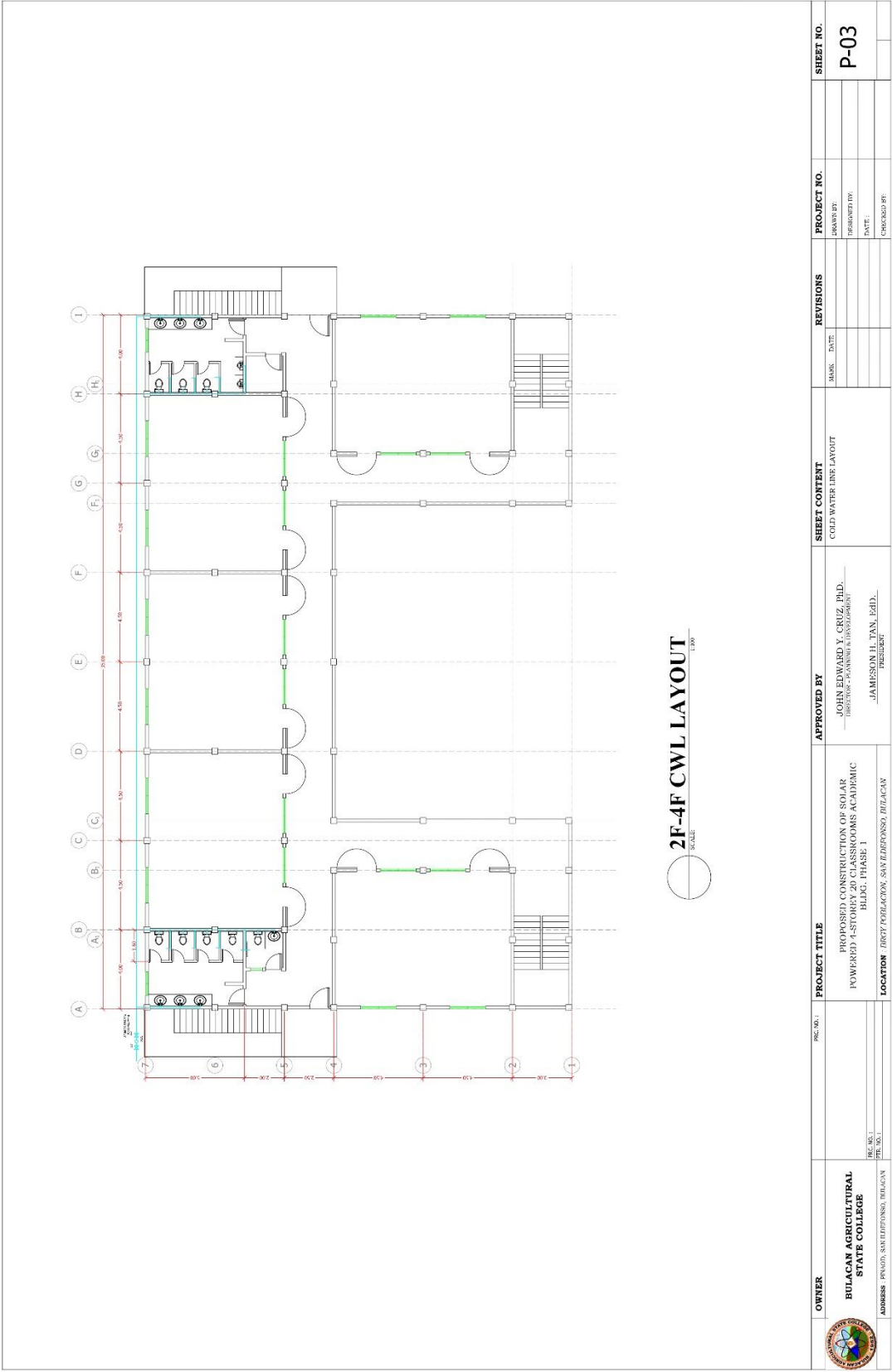
WIRING SCHEDULE	PHASE CONDUCTOR	GROUND CONDUCTOR	CONDUIT SIZE
SYMBOL	NO.	MM ² SQ.	INTERNAL DIA.
XLS	1	3.5 THIN	20
XLS	1	5.5 THIN	20
XLS	1	2.8 THIN	20
XLS	1	5.0 THIN	20
XLS	1	2.4 THIN	20
XLS	1	3.0 THIN	20
XLS	1	3.0 THIN	20
XLS	1	3.0 THIN	20

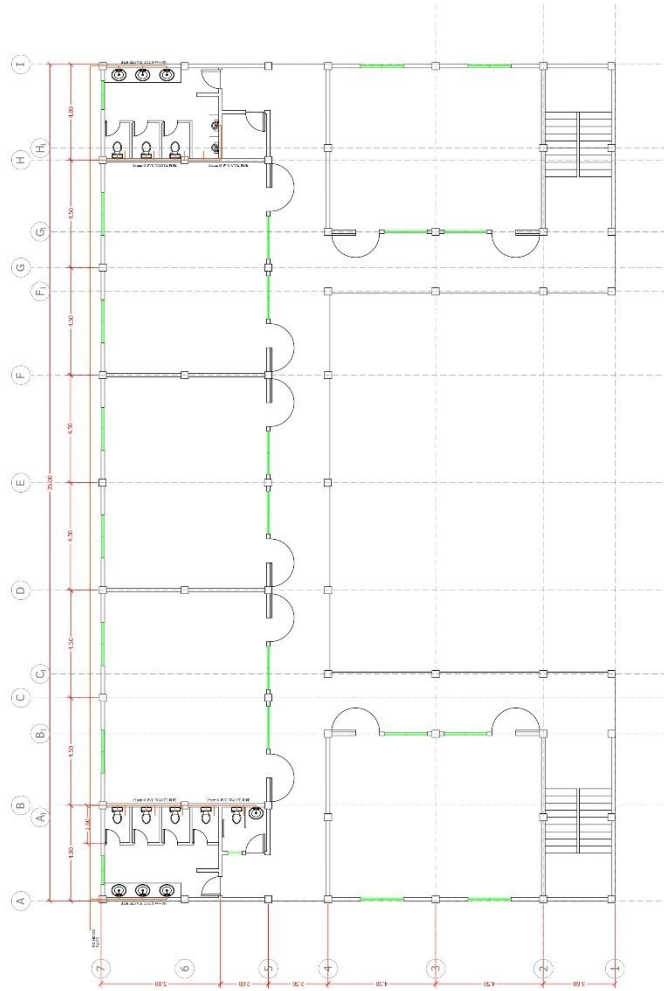
MAIN BREAK / LOAD 2P 200V, 1PHASE AC									
WITH SOLID GROUND BUS.									
MOP (RUSH MOUNTED)									
CIRCUIT BREAKER									
WIRE/CONDUITS									
FEEDER	NO.	LOAD SERVED	VOLTS	VA	AMP	LOAD	AT	AT	P
1	1-4	200	200	1000	100	100	100	100	100
2	5-8	200	200	1000	100	100	100	100	100
3	9-12	200	200	1000	100	100	100	100	100
4	13-16	200	200	1000	100	100	100	100	100
5	17-20	200	200	1000	100	100	100	100	100
6	21-24	200	200	1000	100	100	100	100	100
7	25-28	200	200	1000	100	100	100	100	100
8	29-32	200	200	1000	100	100	100	100	100
9	33-36	200	200	1000	100	100	100	100	100
10	37-40	200	200	1000	100	100	100	100	100
11	41-44	200	200	1000	100	100	100	100	100
12	45-48	200	200	1000	100	100	100	100	100
13	49-52	200	200	1000	100	100	100	100	100
14	53-56	200	200	1000	100	100	100	100	100
15	57-60	200	200	1000	100	100	100	100	100
16	61-64	200	200	1000	100	100	100	100	100
17	65-68	200	200	1000	100	100	100	100	100
18	69-72	200	200	1000	100	100	100	100	100
19	73-76	200	200	1000	100	100	100	100	100
20	77-80	200	200	1000	100	100	100	100	100
21	81-84	200	200	1000	100	100	100	100	100
22	85-88	200	200	1000	100	100	100	100	100
23	89-92	200	200	1000	100	100	100	100	100
24	93-96	200	200	1000	100	100	100	100	100
25	97-100	200	200	1000	100	100	100	100	100
26	101-104	200	200	1000	100	100	100	100	100
27	105-108	200	200	1000	100	100	100	100	100
28	109-112	200	200	1000	100	100	100	100	100
29	113-116	200	200	1000	100	100	100	100	100
30	117-120	200	200	1000	100	100	100	100	100
31	121-124	200	200	1000	100	100	100	100	100
32	125-128	200	200	1000	100	100	100	100	100
33	129-132	200	200	1000	100	100	100	100	100
34	133-136	200	200	1000	100	100	100	100	100
35	137-140	200	200	1000	100	100	100	100	100
36	141-144	200	200	1000	100	100	100	100	100
37	145-148	200	200	1000	100	100	100	100	100
38	149-152	200	200	1000	100	100	100	100	100
39	153-156	200	200	1000	100	100	100	100	100
40	157-160	200	200	1000	100	100	100	100	100
41	161-164	200	200	1000	100	100	100	100	100
42	165-168	200	200	1000	100	100	100	100	100
43	169-172	200	200	1000	100	100	100	100	100
44	173-176	200	200	1000	100	100	100	100	100
45	177-180	200	200	1000	100	100	100	100	100
46	181-184	200	200	1000	100	100	100	100	100
47	185-188	200	200	1000	100	100	100	100	100
48	189-192	200	200	1000	100	100	100	100	100
49	193-196	200	200	1000	100	100	100	100	100
50	197-200	200	200	1000	100	100	100	100	100
51	201-204	200	200	1000	100	100	100	100	100
52	205-208	200	200	1000	100	100	100	100	100
53	209-212	200	200	1000	100	100	100	100	100
54	213-216	200	200	1000	100	100	100	100	100
55	217-220	200	200	1000	100	100	100	100	100
56	221-224	200	200	1000	100	100	100	100	100
57	225-228	200	200	1000	100	100	100	100	100
58	229-232	200	200	1000	100	100	100	100	100
59	233-236	200	200	1000	100	100	100	100	100
60	237-240	200	200	1000	100	100	100	100	100
61	241-244	200	200	1000	100	100	100	100	100
62	245-248	200	200	1000	100	100	100	100	100
63	249-252	200	200	1000	100	100	100	100	100
64	253-256	200	200	1000	100	100	100	100	100
65	257-260	200	200	1000	100	100	100	100	100
66	261-264	200	200	1000	100	100	100	100	100
67	265-268	200	200	1000	100	100	100	100	100
68	269-272	200	200	1000	100	100	100	100	100
69	273-276	200	200	1000	100	100	100	100	100
70	277-280	200	200	1000	100	100	100	100	100
71	281-284	200	200	1000	100	100	100	100	100
72	285-288	200	200	1000	100	100	100	100	100
73	289-292	200	200	1000	100	100	100	100	100
74	293-296	200	200	1000	100	100	100	100	100
75	297-300	200	200	1000	100	100	100	100	100
76	301-304	200	200	1000	100	100	100	100	100
77	305-308	200	200	1000	100	100	100	100	100
78	309-312	200	200	1000	100	100	100	100	100
79	313-316	200	200	1000	100	100	100	100	100
80	317-320	200	200	1000	100	100	100	100	100
81	321-324	200	200	1000	100	100	100	100	100
82	325-328	200	200	1000	100	100	100	100	100
83	329-332	200	200	1000	100	100	100	100	100
84	333-336	200	200	1000	100	100	100	100	100
85	337-340	200	200	1000	100	100	100	100	100
86	341-344	200	200	1000	100	100	100	100	100
87	345-348	200	200	1000	100	100	100	100	100
88	349-352	200	200	1000	100	100	100	100	100
89	353-356	200	200	1000	100	100	100	100	100
90	357-360	200	200	1000	100	100	100	100	100
91	361-364	200	200	1000	100	100	100	100	100
92	365-368	200	200	1000	100	100	100	100	100
93	369-372	200	200	1000	100	100	100	100	100
94	373-376	200	200	1000	100	100	100	100	100
95	377-380	200	200	1000	100	100	100	100	100
96	381-384	200	200	1000	100	100	100	100	100
97	385-388	200	200	1000	100	100	100	100	100
98	389-392	200	200	1000	100	100	100	100	100
99	393-396	200	200	1000	100	100	100	100	100
100	397-400	200	200	1000	100	100	100	100	100
101	401-404	200	200	1000	100	100	100	100	100
102	405-408	200	200	1000	100	100	100	100	100
103	409-412	200	200	1000	100	100	100	100	100
104	413-416	200	200	1000	100	100	100	100	100
105	417-420	200	200	1000	100	100	100	100	100
106	421-424	200	200	1000	100	100	100	100	100
107	425-428	200	200	1000	100	100	100	100	100
108	429-432	200	200	1000	100	100	100	100	100
109	433-436	200	200	1000	100	100	100	100	100
110	437-440	200	200	1000	100	100	100	100	100
111	441-444	200	200	1000	100	100	100	100	100
112	445-448	200	200	1000	100	100	100	100	100
113	449-452	200	200	1000	100	100	100	100	100
114	453-456	200	200	1000	100	100	100	100	100
115	457-460	200	200	1000	100	100	100	100	100
116	461-464	200	200	1000	100	100	100	100	100
117	465-468	200	200	1000	100	100	100	100	100
118	469-472	200	200	1000	100	100	100	100	100
119	473-476	200	200	1000	100	100	100	100	100
120	477-480	200	200	1000	100	100	100	100	100
121	481-484	200	200	1000	100	100	100	100	100
122	485-488	200	200	1000	100	100	100	100	100
123									



GF CWL LAYOUT
TITLE

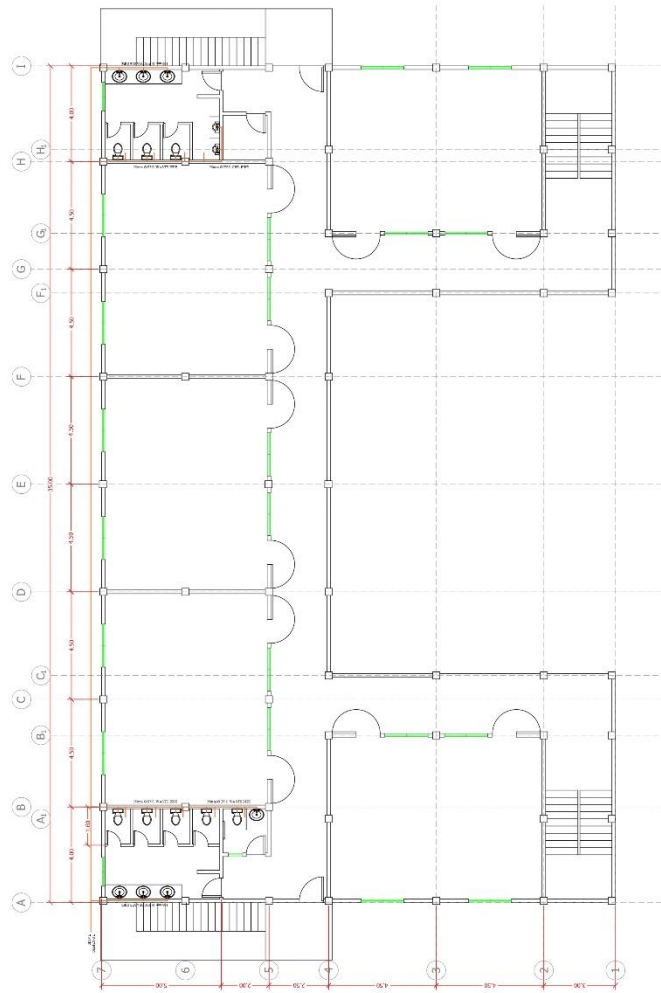
 OWNER BULACAN AGRICULTURAL STATE COLLEGE ADDRESS: PNUOD, SANTILPODOSA, BULACAN	PROJECT TITLE PROPOSED CONSTRUCTION OF SOLAR POWERED 1-5 STORY BUILDINGS ACADEMIC BLDG. PHASE 1 LOCATION: BIRY TORACION, SANTILPODOSA, BULACAN	APPROVED BY JOHN EDWARD Y. CRUZ, JR.D. (REGISTERED PLANNER & ENGINEER) JAMESON H. TAN, JR.D. PRESIDENT	SHEET CONTENT COLD WATER LINE LAYOUT	REVISIONS MARKS: DATE:	PROJECT NO. DRAWN BY: [blank] CHECKED BY: [blank] DESIGNED BY: [blank] DATE: [blank]	SHEET NO. P-02






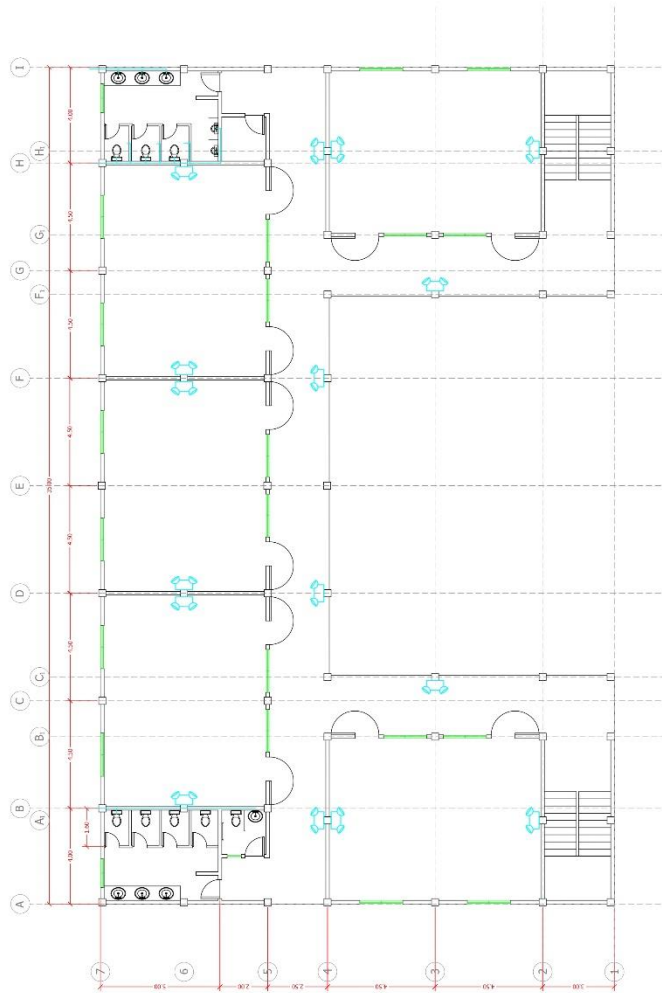
GROUND FLOOR PLAN
SCALE 1:100

	OWNER	FIG. NO. 1	PROJECT TITLE PROPOSED CONSTRUCTION OF SOLAR POWERED 1-STORY 20 CLASSROOMS ACADEMIC BLDG. PHASE 1 LOCATION TIRY PUBLACION, SANTILPOSSO, BULACAN	APPROVED BY JOHN EDWARD Y. CRUZ, PH.D. (REGISTERED PLANNER & TECHNOLOGIST) JAMESON H. TAN, PH.D. PRESIDENT	SHEET CONTENT SEWERAGE LINE LAYOUT	REVISIONS <table><tr><th>NO.</th><th>DATE</th><th>REVISION</th></tr><tr><td> </td><td> </td><td> </td></tr><tr><td> </td><td> </td><td> </td></tr><tr><td> </td><td> </td><td> </td></tr></table>	NO.	DATE	REVISION										PROJECT NO. <table><tr><td>DRAWN BY</td><td> </td></tr><tr><td>REVIEWED BY</td><td> </td></tr><tr><td>DATE</td><td> </td></tr></table>	DRAWN BY		REVIEWED BY		DATE		SHEET NO. P-04
	NO.	DATE					REVISION																			
DRAWN BY																										
REVIEWED BY																										
DATE																										
	ADDRESS: PAVILION, SANTILPOSSO, BULACAN	FIG. NO. 1 FIG. NO. 2 FIG. NO. 3																								



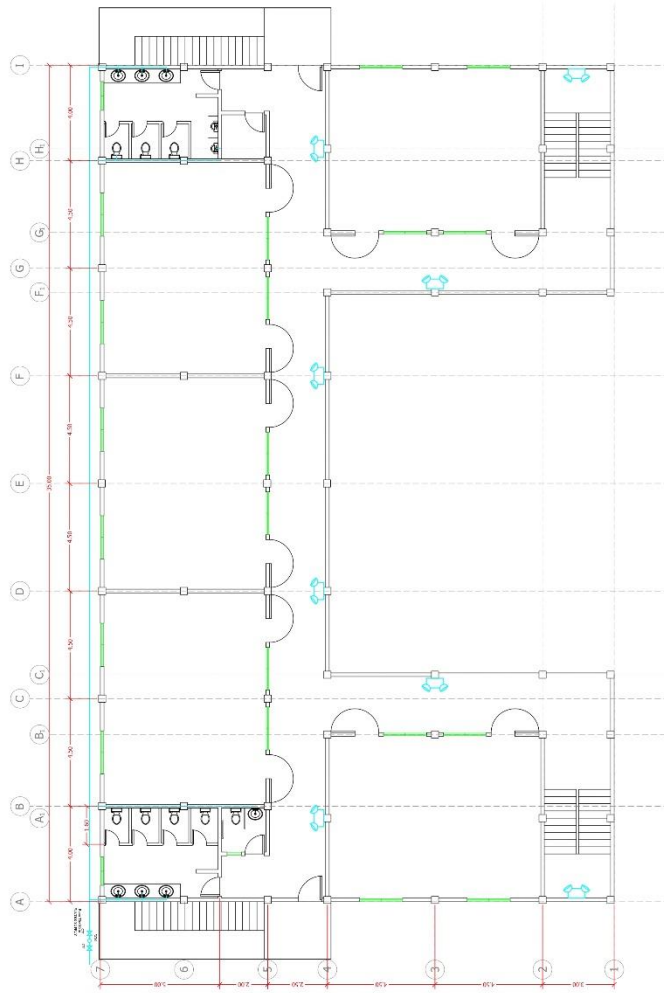
SECOND TO FOURTH FLOOR PLAN
SCALE

 OWNER BULACAN AGRICULTURAL STATE COLLEGE ADDRESS: PNUOD, SANTILPODOSA, BULACAN	PROJECT TITLE PROPOSED CONSTRUCTION OF SOLAR POWERED 1-3-STORY BUILDINGS ACADEMIC BLDG. PHASE 1 LOCATION: BIRY CORALACION, SANTILPODOSA, BULACAN	APPROVED BY JOHN EDWARD Y. CRUZ, JR.D. ARCHITECT PLANNING & DESIGN JAMESON H. TAN, JR.D. PRESIDENT	SHEET CONTENT SANITIZATION LINE LAYOUT	REVISIONS MARKS DATE	PROJECT NO. DRAWN BY: _____ CHECKED BY: _____ DATE: _____	SHEET NO. P-05



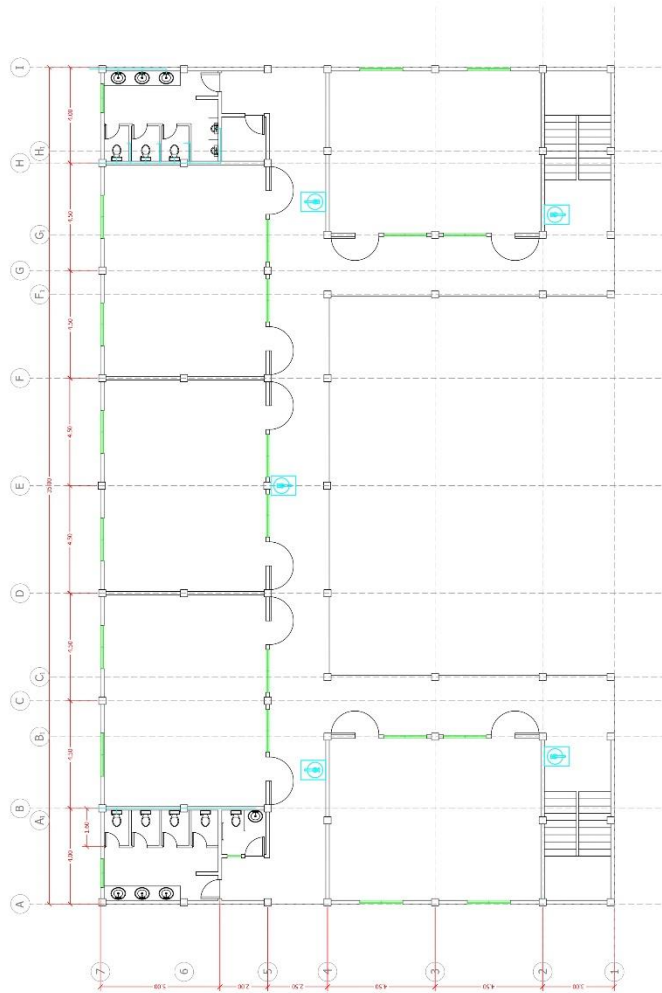
GROUND
EMERGENCY LIGHT LAYOUT
SCALE: 1/800

<div>BULACAN AGRICULTURAL STATE COLLEGE</div> <div>ADDRESS: PNUOD, SAN LITOPODOSA, BULACAN</div>	FIG. NO. 1	PROJECT TITLE	APPROVED BY	SHEET CONTENT	REVISIONS		PROJECT NO.	SHEET NO. <div>F-01</div>
		PROPOSED CONSTRUCTION OF SOLAR POWERED 4-STORY 20 CLASSROOMS ACADEMIC BLDG. PHASE 1	JOHN EDWARD Y. CRUZ, PH.D. DIRECTOR - PLANNING & DEVELOPMENT	EMERGENCY LIGHT PLAN	MARK	DATE	DRAWN BY:	
			JAMESON H. TAN, PH.D. PRESIDENT				DESIGNED BY:	
							CHECKED BY:	



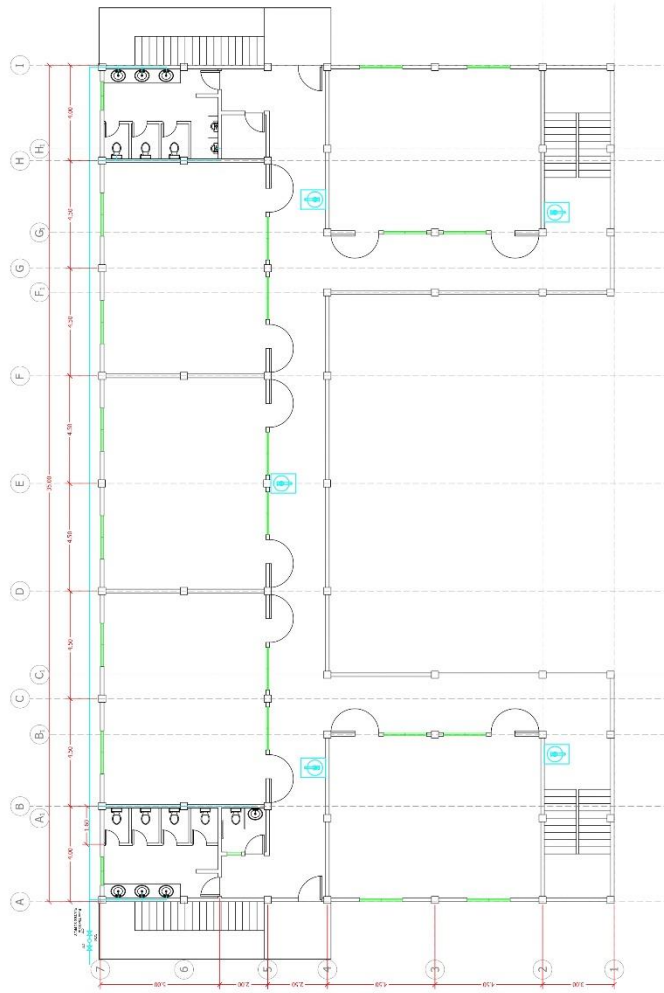
2ND - 4TH
EMERGENCY LIGHT LAYOUT
SCALE

<div></div>	<div>OWNER</div> <div>BULACAN AGRICULTURAL STATE COLLEGE</div> <div>ADDRESS: PIVATO, SANTIPOSONO, BULACAN</div>	PG. NO. 1	<div>PROJECT TITLE</div> <div>PROPOSED CONSTRUCTION OF SOLAR POWERED 1-STORY 20 CLASSROOMS ACADEMIC BLDG. PHASE 1</div> <div>LOCATION: IRIGY CORPORATION, SANTIPOSONO, BULACAN</div>	<div>APPROVED BY</div> <div>JOHN EDWARD Y. CRUZ, PH.D. <small>(REGISTERED PLANNER & TECHNOLOGIST)</small></div> <div>JAMESON H. TAN, PH.D. <small>PRESIDENT</small></div>	<div>SHEET CONTENT</div> <div>EMERGENCY LIGHT PLAN</div>	REVISIONS		<div>PROJECT NO.</div> <div>DRAWN BY: _____</div> <div>DESIGNED BY: _____</div> <div>DATE: _____</div> <div>CHECKED BY: _____</div>	<div>SHEET NO.</div> <div>F-02</div>
		MARK: _____							
		DATE: _____							



GROUND
FIRE EXTINGUISHER KEY PLAN
SCALE: 1/100

BULACAN AGRICULTURAL STATE COLLEGE	ADDRESS: PNUAD, SANTILPOSSO, BULACAN	PROJECT TITLE PROPOSED CONSTRUCTION OF SOLAR POWERED 11-STORY BUILDING FOR BULACAN AGRICULTURAL STATE COLLEGE BULACAN, PHASE 1	APPROVED BY JOHN EDWARD Y. CRUZ, JR.D. DIRECTOR, PLANNING & DEVELOPMENT JAMESON H. TAN, JR.D. PRESIDENT	SHEET CONTENT FIRE EXTINGUISHER KEY PLAN	REVISIONS MARKS DATE	PROJECT NO. DRAWN BY: DESIGNED BY: CHECKED BY:	SHEET NO. F-03



2ND - 4TH
FIRE EXTINGUISHER KEY PLAN
SCALE: 1/8" = 1'-0"

<div></div> <div>OWNER</div>	FIG. NO. 1		PROJECT TITLE	APPROVED BY	SHEET CONTENT	REVISIONS	PROJECT NO.	SHEET NO.
	FIG. NO. 1		PROPOSED CONSTRUCTION OF SOLAR POWERED 1-STORY 20 CLASSROOMS ACADEMIC BLDG. PHASE 1	JOHN EDWARD Y. CRUZ, PH.D. (1963 TO 1967 PLANNING & DESIGN)	FIRE EXTINGUISHER KEY PLAN	DATE	DRAWN BY	F-04
	FIG. NO. 1					DATE	REWORKED BY	
	FIG. NO. 1			JAMESON H. TAN, PH.D. PRESIDENT			DATE	
	FIG. NO. 1		LOCATION				CHECKED BY	
ADDRESS: PIVATO, SANTIPOSONO, BULACAN								

Section VIII. Bill of Quantities

Notes on the Bill of Quantities

Objectives

The objectives of the Bill of Quantities are:

- a. to provide sufficient information on the quantities of Works to be performed to enable Bids to be prepared efficiently and accurately; and
- b. when a Contract has been entered into, to provide a priced Bill of Quantities for use in the periodic valuation of Works executed.

In order to attain these objectives, Works should be itemized in the Bill of Quantities in sufficient detail to distinguish between the different classes of Works, or between Works of the same nature carried out in different locations or in other circumstances which may give rise to different considerations of cost. Consistent with these requirements, the layout and content of the Bill of Quantities should be as simple and brief as possible.

Daywork Schedule

A Daywork Schedule should be included only if the probability of unforeseen work, outside the items included in the Bill of Quantities, is high. To facilitate checking by the Entity of the realism of rates quoted by the Bidders, the Daywork Schedule should normally comprise the following:

- a. A list of the various classes of labor, materials, and Constructional Plant for which basic daywork rates or prices are to be inserted by the Bidder, together with a statement of the conditions under which the Contractor will be paid for work executed on a daywork basis.
- b. Nominal quantities for each item of Daywork, to be priced by each Bidder at Daywork rates as Bid. The rate to be entered by the Bidder against each basic Daywork item should include the Contractor's profit, overheads, supervision, and other charges.

Provisional Sums

A general provision for physical contingencies (quantity overruns) may be made by including a provisional sum in the Summary Bill of Quantities. Similarly, a contingency allowance for possible price increases should be provided as a provisional sum in the Summary Bill of Quantities. The inclusion of such provisional sums often facilitates budgetary approval by avoiding the need to request periodic supplementary approvals as the future need arises. Where such provisional sums or contingency allowances are used, the SCC should state the manner in which they will be used, and under whose authority (usually the Procuring Entity's Representative's).

The estimated cost of specialized work to be carried out, or of special goods to be supplied, by other contractors should be indicated in the relevant part of the Bill of Quantities as a particular provisional sum with an appropriate brief description. A separate procurement procedure is normally carried out by the Procuring Entity to select such specialized contractors. To provide an element of competition among the Bidders in respect of any facilities, amenities, attendance, etc., to be provided by the successful Bidder as prime Contractor for the use and convenience of the specialist contractors, each related provisional sum should be followed by an item in the Bill of Quantities inviting the Bidder to quote a sum for such amenities, facilities, attendance, etc.

Signature Box

A signature box shall be added at the bottom of each page of the Bill of Quantities where the authorized representative of the Bidder shall affix his signature. Failure of the authorized representative to sign each and every page of the Bill of Quantities shall be a cause for rejection of his bid.

These Notes for Preparing a Bill of Quantities are intended only as information for the Procuring Entity or the person drafting the Bidding Documents. They should not be included in the final documents.

BILL OF QUANTITIES

ITEM	DESCRIPTION	UNIT	QTY	PHP PRICE
I.	GENERAL REQUIREMENTS			
	Permits & Licenses	Lot	1	
	Temporary Facilities	Lot	1	
	Design Fees	Lot	1	275,000.00
	Mobilization & Demobilization	Lot	1	
II.	SITE WORKS			
	Site Clearing, Lay-out and grubbing	Lot	1	
	Backfilling & excavation	lot	1	
III.	STRUCTURAL / CONCRETE WORKS			
	10 mm x 6 m def. bar	pcs	4,345	
	12 mm x 6 m def. bar	pcs	490	
	16 mm x 6 m def. bar	pcs	460	
	20 mm x 6 m def. bar	pcs	620	
	25 mm x 6 m def. bar	pcs	1,527	
	# 16 GI tie wire	Kgs.	328	
	cement	bags	6,192	
	Gravel ¾"	cu. m	642	
	sand	cu. m	321	
	Polyethylene sheet 1.5 x 50m	roll	10	

IV.	FORM WORKS			
	Forms & Scaffoldings	lot	1	
V.	MASONRY WORKS			
	10 mm x 6 m dia. Def. bar	Pcs	677	
	#16 GI tie wire	kgs	130	
	Cement	bags	380	
	Gravel ¾"	Cu. m	12	
	sand	Cu. m	60	
	CHB 5"	pcs	5,950	
	CHB 4"	pcs	6,000	
VI.	METAL WORKS			
	BALCONY RAILINGS			
	tubular GI 2 X 2"	Pcs	90	
	tubular GI 2 x 4"	pcs	8	
	Welding rod 5kls per box	box	1	
	FIRE EXIT			
	Fire exit stairs w/ steel door	lot	1	
	STAIRS			
	Flat bar 25mm	pcs	120	
	Square bar 10mm	pcs	35	
	Stairnosing rubber type 2.4 m	pcs	90	
	paint	gal	15	
	handrail	pcs	80	
	Welding rod 5kls per box	box	10	
	consumables	lot	1	
VII.	DOORS & WINDOWS			
	Dry solid panel door 0.9m x 2.1m	set	20	
	Dry solid panel door 0.8m x 2.1m	set	2	
	Solid door jamb	set	22	
	Flush door 0.8m x 2.1m	set	5	
	Alum analok door 0.6m x 2.1m	set	7	
	Door jamb	set	5	
	Door hinges	pcs	93	
	Door lockset	set	31	
	Sliding window w/ lockset 1.8m x 1.2m	set	40	
	Awning window with alum framing 0.5 m x 0.5 m	set	4	
	Sealant & other consumables	lot	1	
VIII.	CEILING WORKS			
	ground & second floor ceiling	lot	1	
IX.	ELECTRICAL WORKS			
	Service entrance	set	1	

	Panel board	set	1	
	consumables	set	1	
	LIGHTING			
	LED bulb 16 watts in pinlight receptacle	set	30	
	LED tube light	pcs	80	
	Luminaire housing (double tube light)	set	40	
	Junction box	pcs	60	
	Utility box	pcs	60	
	connector	pcs	100	
	One gang switch	set	16	
	2 gang switch	set	10	
	2.0 mm2 THHN wire	box	100	
	Conduit PVC	pcs	100	
	CONVENIENCE OUTLET			
	2 gang convenience outlet	set	60	
	ACU convenience outlet	set	20	
	Junction box	pcs	80	
	Utility box	pcs	80	
	connector	pcs	100	
	3.5 mm2 THHN wire	box	75	
	5.5 mm2 THHN wire	box	75	
	Conduit PVC	pcs	140	
X.	PLUMBING WORKS			
A.	WATER LINE			
	PPR gate valve 20mm	pcs	24	
	PPR check valve	pcs	8	
	Union patente	pcs	8	
	PPR pipe 20mm	pcs	32	
	PPR elbow	pcs	42	
	Threaded elbow	pcs	42	
	Threaded tee	pcs	40	
	tee	pcs	40	
	cap	pcs	10	
	Water meter	pcs	1	
	teflon	pcs	20	
	consumables	lot	1	
B.	SEWER LINE			
	4" PVC pipe	pcs	45	
	3" PVC pipe	pcs	16	
	2" PVC pipe	pcs	16	
	1/8 bent 4" x 2" PVC wye reducer	pcs	4	
	1/8 bent 4" x 3" PVC wye reducer	pcs	8	
	PVC wye 4"	pcs	11	

	1/8 bent 2" elbow	pcs	27	
	1/8 bent 4" elbow	pcs	18	
	4"PVC tee	pcs	12	
	PVC solvent	pcs	10	
	Floor drain	pcs	24	
	Clean out	pcs	6	
	p-trap	pcs	24	
	waterproofing	lot	1	
C.	SEPTIC TANK			
	Septic tank	lot	1	
	consumables	lot	1	
D.	PLUMBING FIXTURES			
	Water closet	set	16	
	urinal	set	8	
	lavatory	set	14	
	strainer	pcs	5	
	Cabinet w/ accessories undersink	lot	1	
	Lavatory faucet	pcs	14	
	Hose bib faucet	pcs	9	
	Exhaust fan	pcs	5	
	Consumables	lot	1	
XI.	TILING WORKS			
	Double polished glazed tiles 60cm x 60 cm	pcs	3,350	
	Unglazed tiles 30 x 30 cm	pcs	2,800	
	Tile adhesive	bags	200	
	Grout 2kg	bags	229	
	consumables	lot	1	
XII.	PAINTING WORKS			
	Interior & exterior painting	lot	1	
XIII.	FIRE PROTECTION			
	Emergency light battery operated	set	30	
	Fire extinguisher dry chemical 10 lbs	set	20	
	TOTAL PRICE (inclusive of Labor, Profit, OCM & VAT)			

I hereby certify to comply with all the above technical specifications as per prices quoted in the Bill of Quantities

Name of Company/Bidder

**Signature over Printed Name of
Representatives**

Date

Section IX. Checklist of Technical and Financial Documents

Notes on the Checklist of Technical and Financial Documents

The prescribed documents in the checklist are mandatory to be submitted in the Bid, but shall be subject to the following:

- a. GPPB Resolution No. 09-2020 on the efficient procurement measures during a State of Calamity or other similar issuances that shall allow the use of alternate documents in lieu of the mandated requirements; or
- b. any subsequent GPPB issuances adjusting the documentary requirements after the effectivity of the adoption of the PBDs.

The BAC shall be checking the submitted documents of each Bidder against this checklist to ascertain if they are all present, using a non-discretionary “pass/fail” criterion pursuant to Section 30 of the 2016 revised IRR of RA No. 9184.

Checklist of Technical and Financial Documents

I. TECHNICAL COMPONENT ENVELOPE

Class “A” Documents

Legal Documents

- ☐ (a) Valid PhilGEPS Registration Certificate (Platinum Membership) (all pages);
or
- ☐ (b) Registration certificate from Securities and Exchange Commission (SEC), Department of Trade and Industry (DTI) for sole proprietorship, or Cooperative Development Authority (CDA) for cooperatives or its equivalent document;
and
- ☐ (c) Mayor’s or Business permit issued by the city or municipality where the principal place of business of the prospective bidder is located, or the equivalent document for Exclusive Economic Zones or Areas;
and
- ☐ (e) Tax clearance per E.O. No. 398, s. 2005, as finally reviewed and approved by the Bureau of Internal Revenue (BIR).

Technical Documents

- ☐ (f) Statement of the prospective bidder of all its ongoing government and private contracts, including contracts awarded but not yet started, if any, whether similar or not similar in nature and complexity to the contract to be bid; **and**
- ☐ (g) Statement of the bidder’s Single Largest Completed Contract (SLCC) similar to the contract to be bid, except under conditions provided under the rules;
and
- ☐ (h) Philippine Contractors Accreditation Board (PCAB) License;
or
Special PCAB License in case of Joint Ventures;
and registration for the type and cost of the contract to be bid; **and**
- ☐ (i) Original copy of Bid Security. If in the form of a Surety Bond, submit also a certification issued by the Insurance Commission;
or
Original copy of Notarized Bid Securing Declaration; **and**
- (j) Project Requirements, which shall include the following:
 - ☐ a. Organizational chart for the contract to be bid;
 - ☐ b. List of contractor’s key personnel (*e.g.*, Project Manager, Project Engineers, Materials Engineers, and Foremen), to be assigned to the contract to be bid, with their complete qualification and experience data;
 - ☐ c. List of contractor’s major equipment units, which are owned, leased, and/or under purchase agreements, supported by proof of ownership or certification of availability of equipment from the equipment lessor/vendor for the duration of the project, as the case may be; **and**
- ☐ (k) Original duly signed Omnibus Sworn Statement (OSS);
and if applicable, Original Notarized Secretary’s Certificate in case of a

corporation, partnership, or cooperative; or Original Special Power of Attorney of all members of the joint venture giving full power and authority to its officer to sign the OSS and do acts to represent the Bidder.

Financial Documents

- ☐ (l) The prospective bidder's audited financial statements, showing, among others, the prospective bidder's total and current assets and liabilities, stamped "received" by the BIR or its duly accredited and authorized institutions, for the preceding calendar year which should not be earlier than two (2) years from the date of bid submission; **and**
- ☐ (m) The prospective bidder's computation of Net Financial Contracting Capacity (NFCC).

Class "B" Documents

- ☐ (n) If applicable, duly signed joint venture agreement (JVA) in accordance with RA No. 4566 and its IRR in case the joint venture is already in existence;
or
duly notarized statements from all the potential joint venture partners stating that they will enter into and abide by the provisions of the JVA in the instance that the bid is successful.

II. FINANCIAL COMPONENT ENVELOPE

- ☐ (o) Original of duly signed and accomplished Financial Bid Form; **and**

Other documentary requirements under RA No. 9184

- ☐ (p) Original of duly signed Bid Prices in the Bill of Quantities; **and**
- ☐ (q) Duly accomplished Detailed Estimates Form, including a summary sheet indicating the unit prices of construction materials, labor rates, and equipment rentals used in coming up with the Bid; **and**
- ☐ (r) Cash Flow by Quarter.

Bid Form for the Procurement of Infrastructure Projects

[shall be submitted with the Bid]

BID FORM

Date : _____

Project Identification No. : _____

To: *[name and address of Procuring Entity]*

Having examined the Philippine Bidding Documents (PBDs) including the Supplemental or Bid Bulletin Numbers *[insert numbers]*, the receipt of which is hereby duly acknowledged, we, the undersigned, declare that:

- a. We have no reservation to the PBDs, including the Supplemental or Bid Bulletins, for the Procurement Project: *[insert name of contract]*;
- b. We offer to execute the Works for this Contract in accordance with the PBDs;
- c. The total price of our Bid in words and figures, excluding any discounts offered below is: *[insert information]*;
- d. The discounts offered and the methodology for their application are: *[insert information]*;
- e. The total bid price includes the cost of all taxes, such as, but not limited to: *[specify the applicable taxes, e.g. (i) value added tax (VAT), (ii) income tax, (iii) local taxes, and (iv) other fiscal levies and duties]*, which are itemized herein and reflected in the detailed estimates,
- f. Our Bid shall be valid within the a period stated in the PBDs, and it shall remain binding upon us at any time before the expiration of that period;
- g. If our Bid is accepted, we commit to obtain a Performance Security in the amount of *[insert percentage amount]* percent of the Contract Price for the due performance of the Contract, or a Performance Securing Declaration in lieu of the the allowable forms of Performance Security, subject to the terms and conditions of issued GPPB guidelines² for this purpose;
- h. We are not participating, as Bidders, in more than one Bid in this bidding process, other than alternative offers in accordance with the Bidding Documents;
- i. We understand that this Bid, together with your written acceptance thereof included in your notification of award, shall constitute a binding contract between us, until a formal Contract is prepared and executed; and
- j. We understand that you are not bound to accept the Lowest Calculated Bid or any other Bid that you may receive.
- k. We likewise certify/confirm that the undersigned, is the duly authorized representative of the bidder, and granted full power and authority to do, execute and perform any and all acts necessary to participate, submit the bid, and to sign and execute the ensuing contract for the [Name of Project] of the [Name of the Procuring Entity].

² currently based on GPPB Resolution No. 09-2020

1. We acknowledge that failure to sign each and every page of this Bid Form, including the Bill of Quantities, shall be a ground for the rejection of our bid.

Name: _____

Legal Capacity: _____

Signature: _____

Duly authorized to sign the Bid for and behalf of: _____

Date: _____

[Bidder's Letterhead]

Name of the Procuring Entity : BULACAN AGRICULTURAL STATE COLLEGE

Project: 2022-06-INFRA: Construction of Solar Powered Four Storey 20 Classroom Academic Building (Phase 1)

Location of the Project : San Ildefonso, Bulacan

List of all Ongoing Government & Private Contracts including contracts awarded but not yet started

Business Name : _____
Business Address : _____

Name of Contract/Project Cost	a. Owner's Name b. Address c. Telephone Nos.	Nature of Work	Bidder's Role		a. Date Awarded b. Date Started c. Date of Completion	% of Accomplishment		Value of Outstanding Works / Undelivered Portion
			Description	%		Planned	Actual	
<u>Government</u>								
<u>Private</u>								
Note: This statement shall be supported with:						Total Cost		

- 1 Notice of Award (for government projects)**
- 2 Notice to Proceed (for government projects)**
- 3 Contract**

Submitted by : _____
(Printed Name & Signature)
Designation : _____
Date : _____

[Bidder's Letterhead]

Name of the Procuring Entity : BULACAN AGRICULTURAL STATE COLLEGE

Project: 2022-06-INFRA: Construction of Solar Powered Four Storey 20 Classroom Academic Building (Phase 1)

Location of the Project : San Ildefonso, Bulacan

Statement of Single Largest Completed Contracts (SLCC) in the last five (5) years

Business Name : _____ Business Address : _____

Name of Contract	a. Owner Name b. Address c. Telephone Nos.	Nature of Work	Contractor's Role		a. Amount at Award b. Amount at Completion c. Duration	a. Date Awarded b. Contract Effectivity c. Date Completed
			Description	%		
<u>Government</u>						
<u>Private</u>						

Attached herewith are the following documents: Contract Agreement, Notice of Award, Notice to Proceed, Official Receipt/Invoice, Certificate of Final Inspection, and Certificate of Acceptance, as evidences in support of the foregoing information.

Submitted by : _____

(Printed Name & Signature)

Designation : _____

Contract Agreement Form

THIS AGREEMENT made the ____ day of _____ 20____ between [*name of PROCURING ENTITY*] of the Philippines (hereinafter called “the Entity”) of the one part and [*name of Supplier*] of [*city and country of Supplier*] (hereinafter called “the Supplier”) of the other part:

WHEREAS the Entity invited Bids for certain goods and ancillary services, viz., [*brief description of goods and services*] and has accepted a Bid by the Supplier for the supply of those goods and services in the sum of [*contract price in words and figures*] (hereinafter called “the Contract Price”).

NOW THIS AGREEMENT WITNESSETH AS FOLLOWS:

1. In this Agreement words and expressions shall have the same meanings as are respectively assigned to them in the Conditions of Contract referred to.
2. The following documents shall be deemed to form and be read and construed as part of this Agreement, viz.:
 - (a) the Supplier’s Bid, including the Technical and Financial Proposals, and all other documents/statements submitted (*e.g.* bidder’s response to clarifications on the bid), including corrections to the bid resulting from the Procuring Entity’s bid evaluation;
 - (b) the Schedule of Requirements;
 - (c) the Technical Specifications;
 - (d) the General Conditions of Contract;
 - (e) the Special Conditions of Contract;
 - (f) the Performance Security; and
 - (g) the Entity’s Notice of Award.
3. In consideration of the payments to be made by the Entity to the Supplier as hereinafter mentioned, the Supplier hereby covenants with the Entity to provide the goods and services and to remedy defects therein in conformity in all respects with the provisions of the Contract
4. The Entity hereby covenants to pay the Supplier in consideration of the provision of the goods and services and the remedying of defects therein, the Contract Price or such other sum as may become payable under the provisions of the contract at the time and in the manner prescribed by the contract.

IN WITNESS whereof the parties hereto have caused this Agreement to be executed in accordance with the laws of the Republic of the Philippines on the day and year first above written.

Signed, sealed, delivered by _____ the _____ (for the Entity)

Signed, sealed, delivered by _____ the _____ (for the Supplier)

Omnibus Sworn Statement (Revised)

[shall be submitted with the Bid]

REPUBLIC OF THE PHILIPPINES)

CITY/MUNICIPALITY OF _____) S.S.

AFFIDAVIT

I, [Name of Affiant], of legal age, [Civil Status], [Nationality], and residing at [Address of Affiant], after having been duly sworn in accordance with law, do hereby depose and state that:

1. *[Select one, delete the other:]*

[If a sole proprietorship:] I am the sole proprietor or authorized representative of [Name of Bidder] with office address at [address of Bidder];

[If a partnership, corporation, cooperative, or joint venture:] I am the duly authorized and designated representative of [Name of Bidder] with office address at [address of Bidder];

2. *[Select one, delete the other:]*

[If a sole proprietorship:] As the owner and sole proprietor, or authorized representative of [Name of Bidder], I have full power and authority to do, execute and perform any and all acts necessary to participate, submit the bid, and to sign and execute the ensuing contract for [Name of the Project] of the [Name of the Procuring Entity], as shown in the attached duly notarized Special Power of Attorney;

[If a partnership, corporation, cooperative, or joint venture:] I am granted full power and authority to do, execute and perform any and all acts necessary to participate, submit the bid, and to sign and execute the ensuing contract for [Name of the Project] of the [Name of the Procuring Entity], as shown in the attached [state title of attached document showing proof of authorization (e.g., duly notarized Secretary's Certificate, Board/Partnership Resolution, or Special Power of Attorney, whichever is applicable)];

3. [Name of Bidder] is not "blacklisted" or barred from bidding by the Government of the Philippines or any of its agencies, offices, corporations, or Local Government Units, foreign government/foreign or international financing institution whose blacklisting rules have been recognized by the Government Procurement Policy Board, **by itself or by relation, membership, association, affiliation, or controlling interest with another blacklisted person or entity as defined and provided for in the Uniform Guidelines on Blacklisting;**
4. Each of the documents submitted in satisfaction of the bidding requirements is an authentic copy of the original, complete, and all statements and information provided therein are true and correct;
5. [Name of Bidder] is authorizing the Head of the Procuring Entity or its duly authorized representative(s) to verify all the documents submitted;
6. *[Select one, delete the rest:]*

[If a sole proprietorship:] The owner or sole proprietor is not related to the Head of the Procuring Entity, members of the Bids and Awards Committee (BAC), the Technical Working Group, and

the BAC Secretariat, the head of the Project Management Office or the end-user unit, and the project consultants by consanguinity or affinity up to the third civil degree;

[If a partnership or cooperative:] None of the officers and members of *[Name of Bidder]* is related to the Head of the Procuring Entity, members of the Bids and Awards Committee (BAC), the Technical Working Group, and the BAC Secretariat, the head of the Project Management Office or the end-user unit, and the project consultants by consanguinity or affinity up to the third civil degree;

[If a corporation or joint venture:] None of the officers, directors, and controlling stockholders of *[Name of Bidder]* is related to the Head of the Procuring Entity, members of the Bids and Awards Committee (BAC), the Technical Working Group, and the BAC Secretariat, the head of the Project Management Office or the end-user unit, and the project consultants by consanguinity or affinity up to the third civil degree;

7. *[Name of Bidder]* complies with existing labor laws and standards; and
8. *[Name of Bidder]* is aware of and has undertaken the responsibilities as a Bidder in compliance with the Philippine Bidding Documents, which includes:
 - a. Carefully examining all of the Bidding Documents;
 - b. Acknowledging all conditions, local or otherwise, affecting the implementation of the Contract;
 - c. Making an estimate of the facilities available and needed for the contract to be bid, if any; and
 - d. Inquiring or securing Supplemental/Bid Bulletin(s) issued for the *[Name of the Project]*.
9. *[Name of Bidder]* did not give or pay directly or indirectly, any commission, amount, fee, or any form of consideration, pecuniary or otherwise, to any person or official, personnel or representative of the government in relation to any procurement project or activity.
10. **In case advance payment was made or given, failure to perform or deliver any of the obligations and undertakings in the contract shall be sufficient grounds to constitute criminal liability for Swindling (Estafa) or the commission of fraud with unfaithfulness or abuse of confidence through misappropriating or converting any payment received by a person or entity under an obligation involving the duty to deliver certain goods or services, to the prejudice of the public and the government of the Philippines pursuant to Article 315 of Act No. 3815 s. 1930, as amended, or the Revised Penal Code.**

IN WITNESS WHEREOF, I have hereunto set my hand this ___ day of ___, 20__ at _____, Philippines.

[Insert NAME OF BIDDER OR ITS AUTHORIZED REPRESENTATIVE]

[Insert signatory's legal capacity]

Affiant

[Jurat]

[Format shall be based on the latest Rules on Notarial Practice]

Bid Securing Declaration Form

[shall be submitted with the Bid if bidder opts to provide this form of bid security]

REPUBLIC OF THE PHILIPPINES)

CITY OF _____) S.S.

BID SECURING DECLARATION

Project Identification No.: *[Insert number]*

To: *[Insert name and address of the Procuring Entity]*

I/We, the undersigned, declare that:

1. I/We understand that, according to your conditions, bids must be supported by a Bid Security, which may be in the form of a Bid Securing Declaration.
2. I/We accept that: (a) I/we will be automatically disqualified from bidding for any procurement contract with any procuring entity for a period of two (2) years upon receipt of your Blacklisting Order; and, (b) I/we will pay the applicable fine provided under Section 6 of the Guidelines on the Use of Bid Securing Declaration, within fifteen (15) days from receipt of the written demand by the procuring entity for the commission of acts resulting to the enforcement of the bid securing declaration under Sections 23.1(b), 34.2, 40.1 and 69.1, except 69.1(f), of the IRR of RA No. 9184; without prejudice to other legal action the government may undertake.
3. I/We understand that this Bid Securing Declaration shall cease to be valid on the following circumstances:
 - a. Upon expiration of the bid validity period, or any extension thereof pursuant to your request;
 - b. I am/we are declared ineligible or post-disqualified upon receipt of your notice to such effect, and (i) I/we failed to timely file a request for reconsideration or (ii) I/we filed a waiver to avail of said right; and
 - c. I am/we are declared the bidder with the Lowest Calculated Responsive Bid, and I/we have furnished the performance security and signed the Contract.

IN WITNESS WHEREOF, I/We have hereunto set my/our hand/s this ____ day of *[month]* *[year]* at *[place of execution]*.

*[[Insert NAME OF BIDDER OR ITS
AUTHORIZED REPRESENTATIVE]*

[Insert signatory's legal capacity]

Affiant

[Jurat] *[Format shall be based on the latest Rules on Notarial Practice]*

NET FINANCIAL CONTRACTING CAPACITY

		Year 20____
1	Total Assets	
2	Current Assets	
3	Total Liabilities	
4	Current Liabilities	
5	Net Worth (1-3)	
6	Net Working Capital (2-4)	

The Net Financial Contracting Capacity (NFCC) based on the above data is computed as follows:

NFCC = [(Current assets – current liabilities) (15)] minus value of all outstanding or uncompleted portions of the projects under ongoing contracts including awarded contracts yet to be started coinciding with the contract to be bid.

The values of the domestic bidder's current assets and current liabilities shall be based on the latest Audited Financial Statements submitted to the BIR.

NFCC = PhP _____

Submitted by:

Name of Bidder

Signature of Authorized Representative over Printed Name

Date: _____

